

PROPERTY | WITH PURPOSE

**R56,700** per month excl. VAT

R45 per m<sup>2</sup>

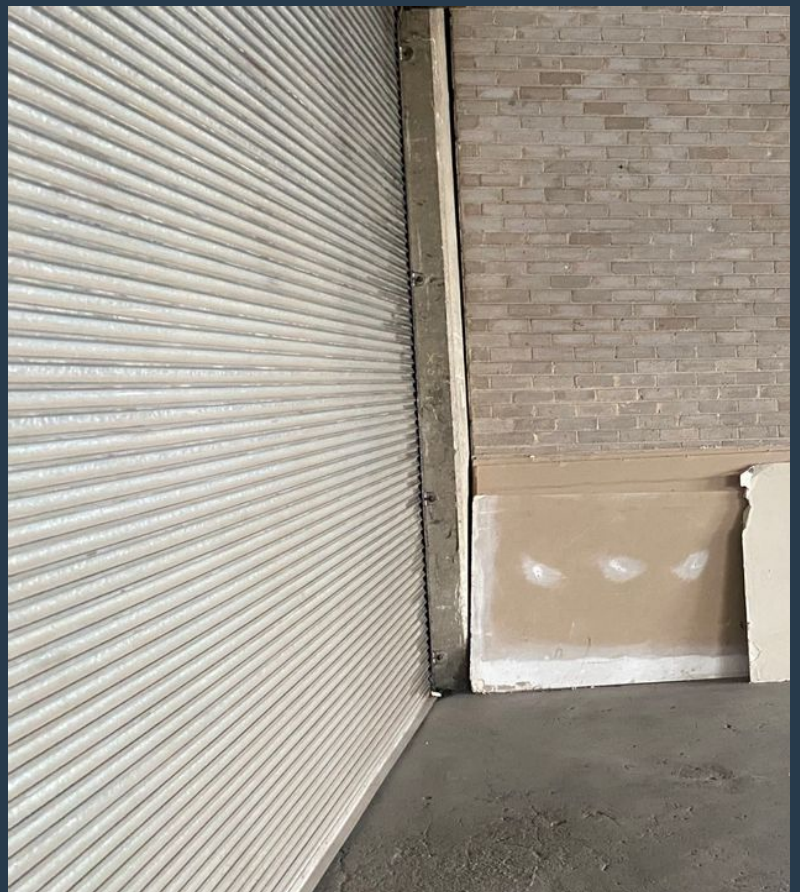


[www.spire.co.za](http://www.spire.co.za)

**TO LET**



1 260Sqm Warehouse space to let in Wynberg . The space is in a closed environment that has 24/7 protection. This space caters for many organizations who have big production systems and wanting to build and grow their organization. There is a parking space that can be used for additional parking space. Wynberg is a suburb of Johannesburg, South Africa. It is located in Region E of the City of Johannesburg Metropolitan Municipality. It is based right next to Sandton, Johannesburg's that is built-up area with wall-to-wall factories. We have been helping businesses just like yours to find their perfect commercial, retail or industrial spaces. Our team of property professionals are ready to find your perfect space. We have a longstanding...



WEB REF: SCL1024

Nadeema Chothia | 083 305 5354 | [nadeemac@spire.co.za](mailto:nadeemac@spire.co.za)

PROPERTY | WITH PURPOSE

**R56,700** per month excl. VAT

R45 per m<sup>2</sup>



[www.spire.co.za](http://www.spire.co.za)

## WAREHOUSE SPACE TO LET IN WYNBERG, SANDTON



### PROPERTY DETAILS

- ▲ Floor Size 1260m<sup>2</sup>
- ▲ Zoning Industrial

WEB REF: SCL1024

Nadeema Chothia | 083 305 5354 | [nadeemac@spire.co.za](mailto:nadeemac@spire.co.za)

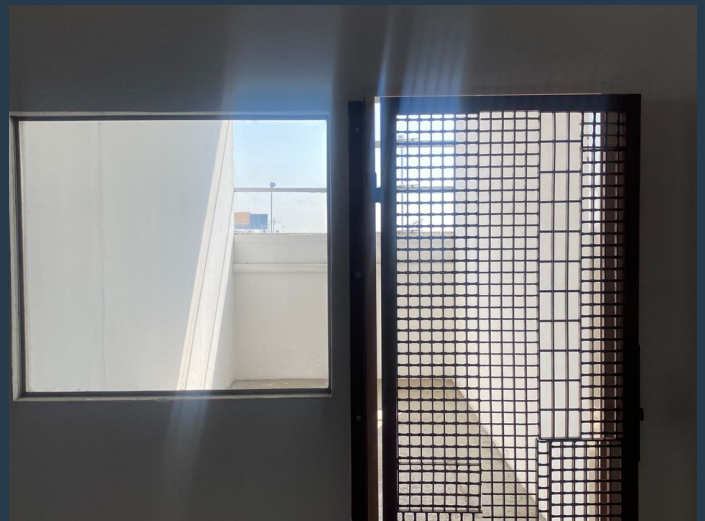
PROPERTY | WITH PURPOSE

**R56,700** per month excl. VAT

R45 per m<sup>2</sup>



[www.spire.co.za](http://www.spire.co.za)



## CONTACT US



**Nadeema Chothia**

Agent

 (011) 2685871

 083 305 5354

 [nadeemac@spire.co.za](mailto:nadeemac@spire.co.za)

WEB REF: SCL1024

Nadeema Chothia | 083 305 5354 | [nadeemac@spire.co.za](mailto:nadeemac@spire.co.za)