

PROPERTY | WITH PURPOSE

R23,650 per month excl. VAT

R43 per m²

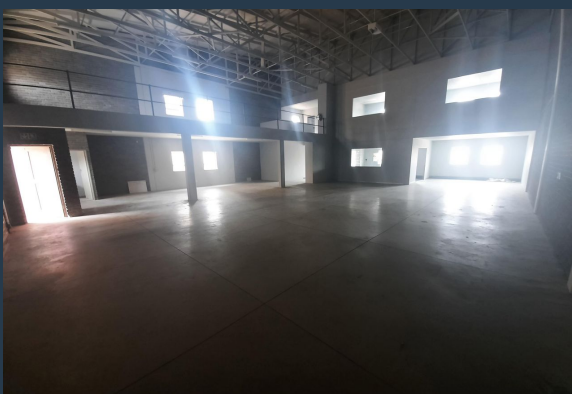


www.spire.co.za

TO LET



550 sqm Industrial space available immediately to rent. Celtis Business Park has various sizes of industrial space to let and is located in Stormill in the Roodepoort area. The unit comprise of upper levels and an office area separate from the warehousing component. Security consists of CCTV cameras, Electric Fencing, boom access. The warehouse area with power floated concrete floors and extra- high roof offers ablution facilities and a private courtyard. The Park offers easy access onto Main Reef Road with the Maraisburg/ N1 interchange approx. 4 kilometers from the complex gate. Sign a 36 month lease and get an additional 3 months rent free, offer valid from August 2020 to 30 September 2021 The warehouse provides easy...



WEB REF: CL2298

Nadeema Chothia | 083 305 5354 | nadeemac@spire.co.za

PROPERTY | WITH PURPOSE

R23,650 per month excl. VAT

R43 per m²



www.spire.co.za

INDUSTRIAL SPACE TO RENT IN ROODEPOORT | CELTIS BUSINESS PARK



PROPERTY DETAILS

▲ Security	Yes	▲ Open Parking	2.0	▲ Floor Size	550m ²
		▲ Covered Parking	2.0	▲ Zoning	Industrial

WEB REF: CL2298

Nadeema Chothia | 083 305 5354 | nadeemac@spire.co.za

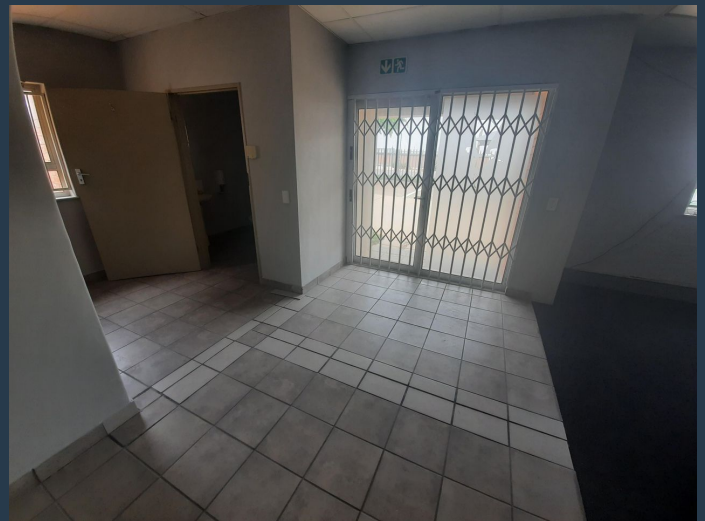
PROPERTY | WITH PURPOSE

R23,650 per month excl. VAT

R43 per m²



www.spire.co.za



CONTACT US



Nadeema Chothia

Agent

 (011) 2685871

 083 305 5354

 nadeemac@spire.co.za

WEB REF: CL2298

Nadeema Chothia | 083 305 5354 | nadeemac@spire.co.za