

PROPERTY | WITH PURPOSE

R19,549 per month excl. VAT

R48 per m²



www.spire.co.za

TO LET



The 407.28sqm unit warehouse is well-positioned in the prime industrial sector of Robertville, consisting of offices as well as a yard. Robertville Industrial Park is located right in the heart of the Robertville industrial and business node of Roodepoort, not too far away from Main Reef Road. This building offers plenty parking and excellent security. SPIRE Property Solutions has been helping businesses just like yours to find their perfect commercial retail or industrial space. Our team of property professionals are ready to find your perfect space. We have a longstanding relationship with the top property funds and property management companies in the city. We feature properties from Roodepoort most exclusive, vibrant, and...



WEB REF: CL3675

Nadeema Chothia | 083 305 5354 | nademac@spire.co.za

PROPERTY | WITH PURPOSE

R19,549 per month excl. VAT

R48 per m²



www.spire.co.za

WAREHOUSE TO LET IN ROODEPOORT | ROBERTVILLE INDUSTRIAL PARK



PROPERTY DETAILS

▲ Security	Yes	▲ Floor Size	407m ²
		▲ Zoning	Industrial

WEB REF: CL3675

Nadeema Chothia | 083 305 5354 | nadeemac@spire.co.za

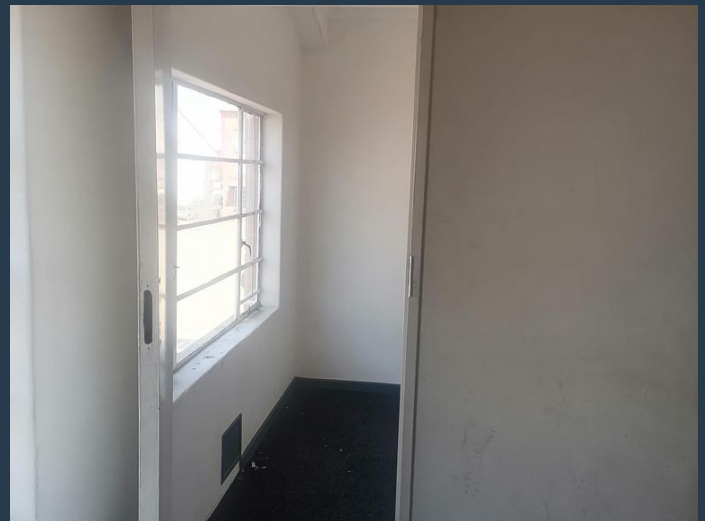
PROPERTY | WITH PURPOSE

R19,549 per month excl. VAT

R48 per m²



www.spire.co.za



CONTACT US



Nadeema Chothia

Agent

 (011) 2685871

 083 305 5354

 nadeemac@spire.co.za

WEB REF: CL3675

Nadeema Chothia | 083 305 5354 | nadeemac@spire.co.za