

PROPERTY | WITH PURPOSE

R43,378 per month excl. VAT

R100 per m²

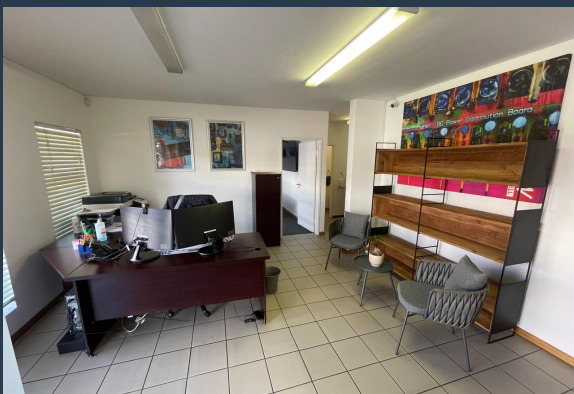


www.spire.co.za

TO LET



430m² Warehouse for Rent Montague Gardens This 430m² warehouse in Montague Gardens is fully fitted out and ready for immediate occupation. The unit features a large roller shutter door for easy loading access, a kitchen, and ample parking for tenants. The layout is practical and functional, suited to a range of industrial operations including distribution, light manufacturing, or storage. The space offers good internal height and convenient access to major transport routes. Montague Gardens is one of Cape Town's most established industrial nodes, known for its central location and ease of access to the N1, N7, and major arterial roads. Renting here means joining a business community surrounded by reliable infrastructure, public transport...



WEB REF: SCL2325

Logan Du Pessis | 0736449934 | logand@spire.co.za

PROPERTY | WITH PURPOSE

R43,378 per month excl. VAT

R100 per m²



www.spire.co.za

430M² WAREHOUSE FOR RENT MONTAGUE GARDENS



PROPERTY DETAILS

- ▲ Floor Size 430m²
- ▲ Zoning Industrial

WEB REF: SCL2325

Logan Du Pessis | 0736449934 | logand@spire.co.za

PROPERTY | WITH PURPOSE

R43,378 per month excl. VAT

R100 per m²



www.spire.co.za



CONTACT US



Logan Du Pessis
Agent

☎ (021) 6854020
📱 0736449934
✉ logand@spire.co.za



Kevin Hellyer
Candidate Property Practitioner

☎ (021) 6854020
📱 061 484 5578
✉ kevinh@spire.co.za