

PROPERTY | WITH PURPOSE

**R13,430** per month excl. VAT

R85 per m<sup>2</sup>

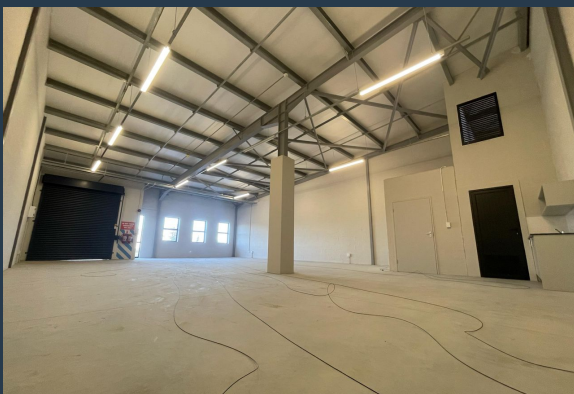


[www.spire.co.za](http://www.spire.co.za)

**TO LET**



158m<sup>2</sup> Warehouse for Rent in Milnerton This modern 158m<sup>2</sup> warehouse in Milnerton is fully fitted and move-in ready, offering the perfect space for businesses looking to establish or expand their operations. The property features spacious interiors, full kitchen facilities, ample parking for tenants, and large roller shutter doors that facilitate easy loading and unloading. Situated in a secure and accessible industrial area, this warehouse is well-suited for a range of uses, including storage, distribution, and light manufacturing. Milnerton is a prime industrial location, offering businesses proximity to major transport routes, including the N1 and Koeberg Road, which connect to Cape Town's CBD and the greater metropolitan area. The...



WEB REF: SCL2272

Logan Du Pessis | 0736449934 | [logand@spire.co.za](mailto:logand@spire.co.za)

PROPERTY | WITH PURPOSE

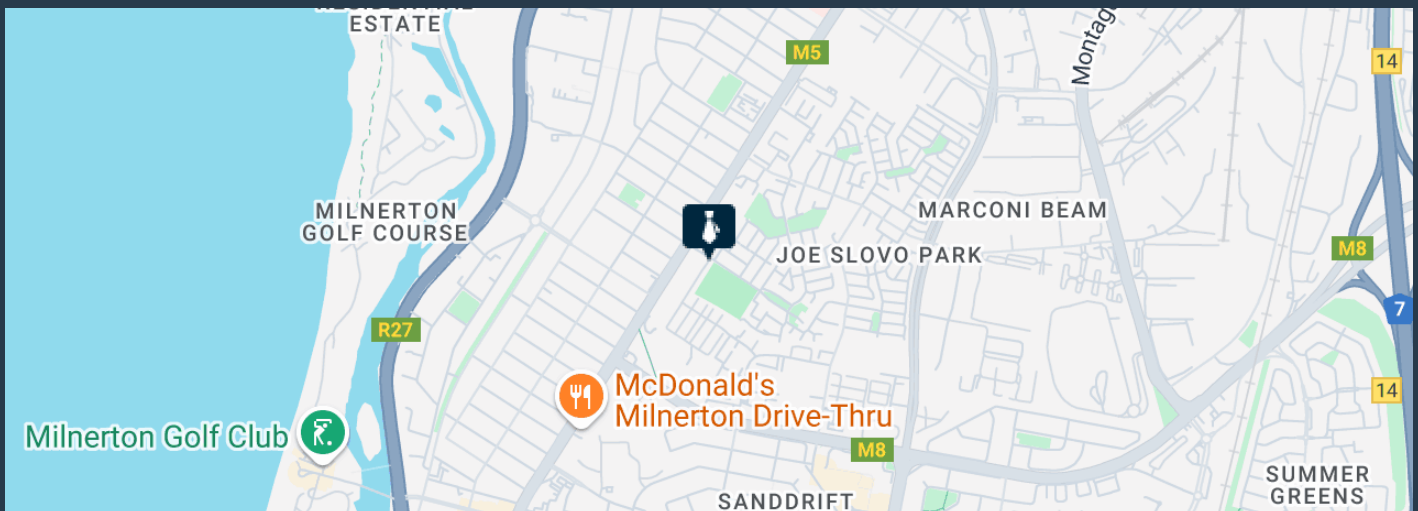
**R13,430** per month excl. VAT

R85 per m<sup>2</sup>



[www.spire.co.za](http://www.spire.co.za)

## 158M<sup>2</sup> WAREHOUSE FOR RENT IN MILNERTON



### PROPERTY DETAILS

- ▲ Floor Size 158m<sup>2</sup>
- ▲ Zoning Industrial

WEB REF: SCL2272

Logan Du Pessis | 0736449934 | [logand@spire.co.za](mailto:logand@spire.co.za)



PROPERTY | WITH PURPOSE

**R13,430** per month excl. VAT

R85 per m<sup>2</sup>



[www.spire.co.za](http://www.spire.co.za)



## CONTACT US



**Logan Du Pessis**

Agent

📞 (021) 6854020

📱 0736449934

✉️ [logand@spire.co.za](mailto:logand@spire.co.za)



**Kevin Hellyer**

Candidate Property Practitioner

📞 (021) 6854020

📱 061 484 5578

✉️ [kevinh@spire.co.za](mailto:kevinh@spire.co.za)

WEB REF: SCL2272

Logan Du Pessis | 0736449934 | [logand@spire.co.za](mailto:logand@spire.co.za)