

PROPERTY | WITH PURPOSE

**R26,250** per month excl. VAT

R75 per m<sup>2</sup>

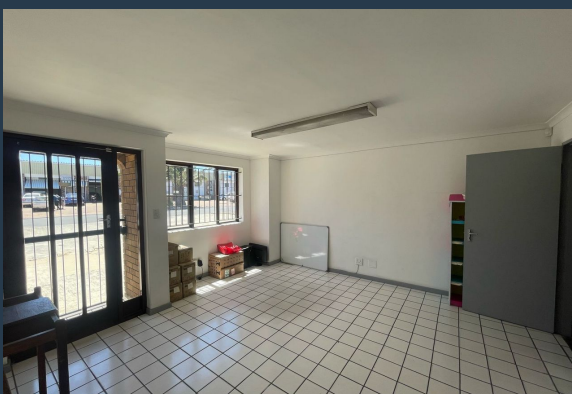


[www.spire.co.za](http://www.spire.co.za)

**TO LET**



350 m<sup>2</sup> Warehouse Space for Rent at 42 Stella Road. This versatile 350 m<sup>2</sup> warehouse at 42 Stella Road is move-in ready, offering an excellent opportunity for businesses in need of functional and well-located industrial space. Featuring ample parking for tenants and visitors, this property ensures convenience and accessibility. The warehouse is designed for efficiency, with high ceilings, excellent natural light, and easy loading access. A full kitchen is included, making it ideal for businesses that require staff amenities on-site. Whether you're expanding operations or relocating, this space provides a seamless solution for your business needs. 42 Stella Road is a sought-after business location, offering excellent connectivity and a...



WEB REF: SCL2230

Logan Du Pessis | 0736449934 | [logand@spire.co.za](mailto:logand@spire.co.za)

PROPERTY | WITH PURPOSE

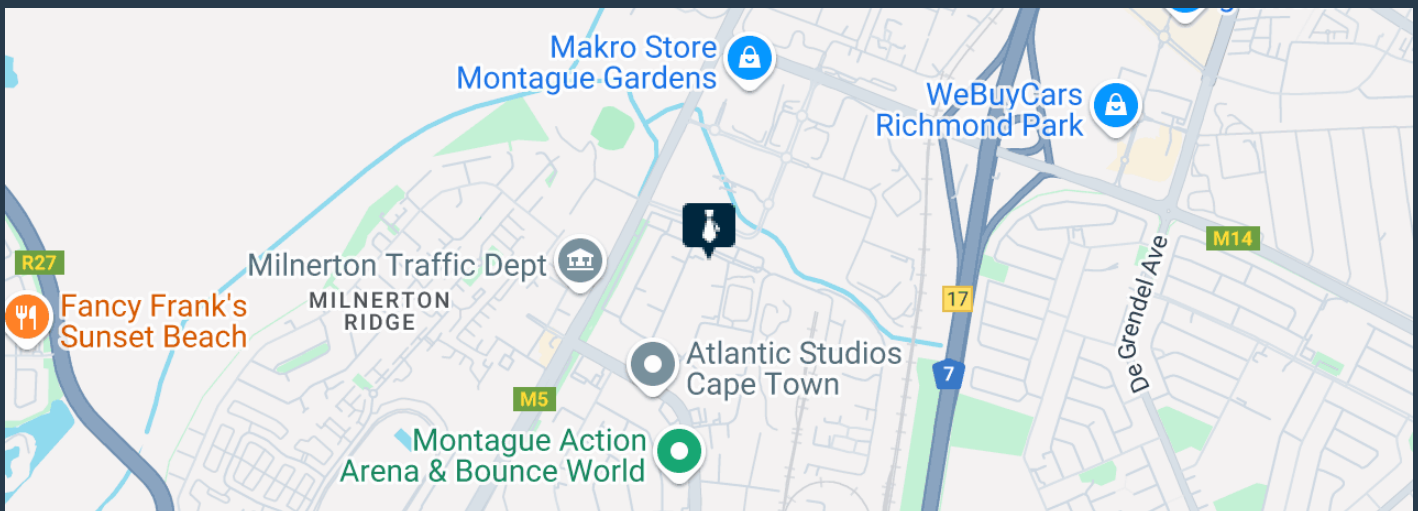
**R26,250** per month excl. VAT

R75 per m<sup>2</sup>



[www.spire.co.za](http://www.spire.co.za)

## 350 M<sup>2</sup> WAREHOUSE SPACE FOR RENT AT 42 STELLA ROAD



### PROPERTY DETAILS

- ▲ Floor Size 350m<sup>2</sup>
- ▲ Zoning Industrial

WEB REF: SCL2230

Logan Du Pessis | 0736449934 | [logand@spire.co.za](mailto:logand@spire.co.za)

PROPERTY | WITH PURPOSE

**R26,250** per month excl. VAT

R75 per m<sup>2</sup>



[www.spire.co.za](http://www.spire.co.za)



## CONTACT US



**Logan Du Pessis**

Agent

☎ (021) 6854020

📱 0736449934

✉ [logand@spire.co.za](mailto:logand@spire.co.za)



**Kevin Hellyer**

Candidate Property Practitioner

☎ (021) 6854020

📱 061 484 5578

✉ [kevinh@spire.co.za](mailto:kevinh@spire.co.za)

WEB REF: SCL2230

Logan Du Pessis | 0736449934 | [logand@spire.co.za](mailto:logand@spire.co.za)