

PROPERTY | WITH PURPOSE

R29,280 per month excl. VAT

R80 per m²

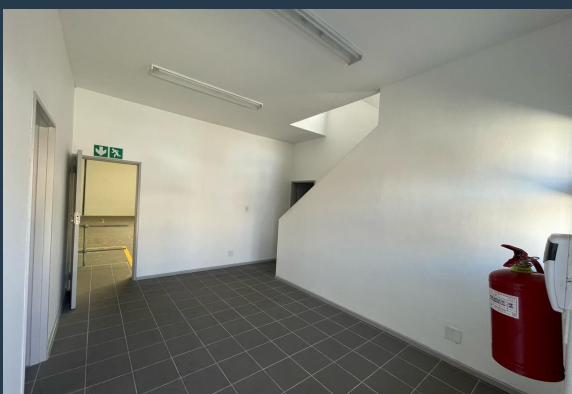
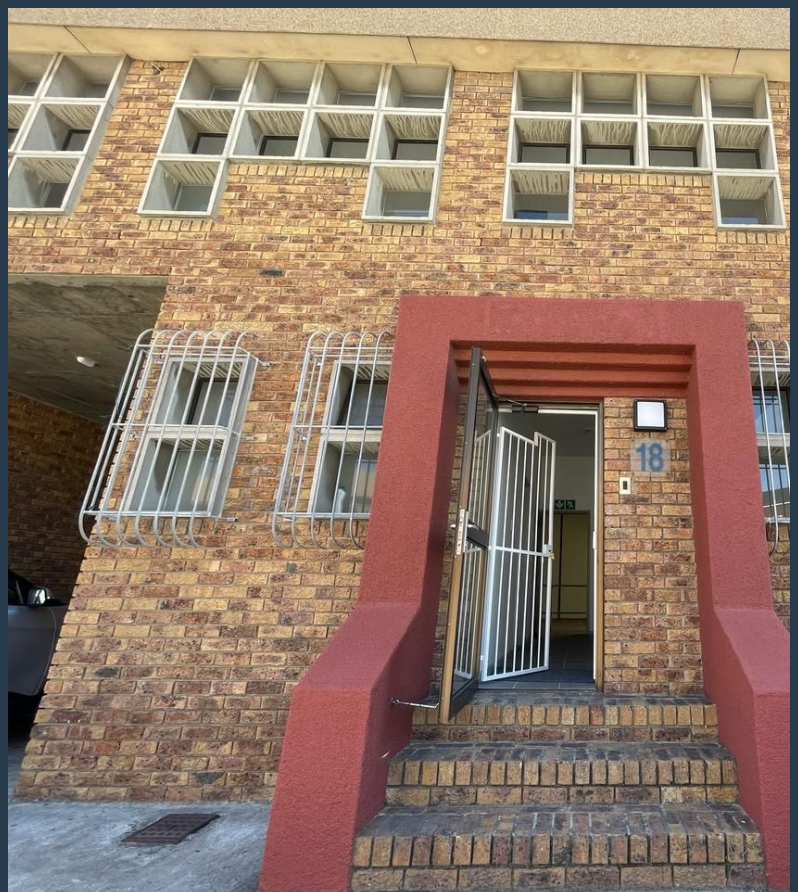


www.spire.co.za

TO LET



366m² Warehouse to Rent in Montague Gardens This 366m² warehouse in Montague Gardens is fully fitted out and ready for immediate occupation. Featuring a large roller shutter door, the space offers seamless access for loading and unloading operations. Inside, tenants will benefit from a well-equipped kitchen, ample open workspace, and generous parking availability, ensuring convenience for staff and visitors. The unit is designed to support a range of industrial and commercial activities, making it an ideal choice for businesses looking for a functional and efficient warehouse solution. Why Montague Gardens? & Our Industry Expertise Montague Gardens is one of Cape Town's most sought-after industrial hubs, offering excellent transport...



WEB REF: SCL2222

Logan Du Pessis | 0736449934 | logand@spire.co.za

PROPERTY | WITH PURPOSE

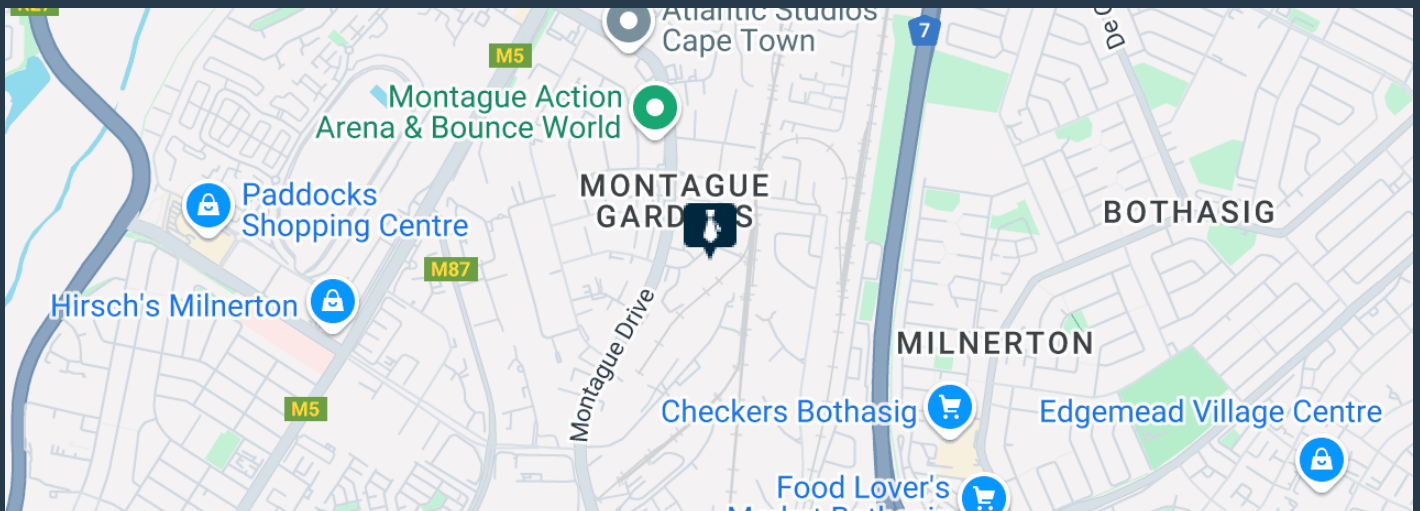
R29,280 per month excl. VAT

R80 per m²



www.spire.co.za

366M² WAREHOUSE TO RENT IN MONTAGUE GARDENS



PROPERTY DETAILS

- ▲ Floor Size 366m²
- ▲ Zoning Industrial

WEB REF: SCL2222

Logan Du Pessis | 0736449934 | logand@spire.co.za

PROPERTY | WITH PURPOSE

R29,280 per month excl. VAT

R80 per m²



www.spire.co.za



CONTACT US



Logan Du Pessis

Agent

☎ (021) 6854020

📱 0736449934

✉ logand@spire.co.za



Kevin Hellyer

Candidate Property Practitioner

☎ (021) 6854020

📱 061 484 5578

✉ kevinh@spire.co.za

WEB REF: SCL2222

Logan Du Pessis | 0736449934 | logand@spire.co.za