

PROPERTY | WITH PURPOSE

R516,375 per month excl. VAT

R85 per m²

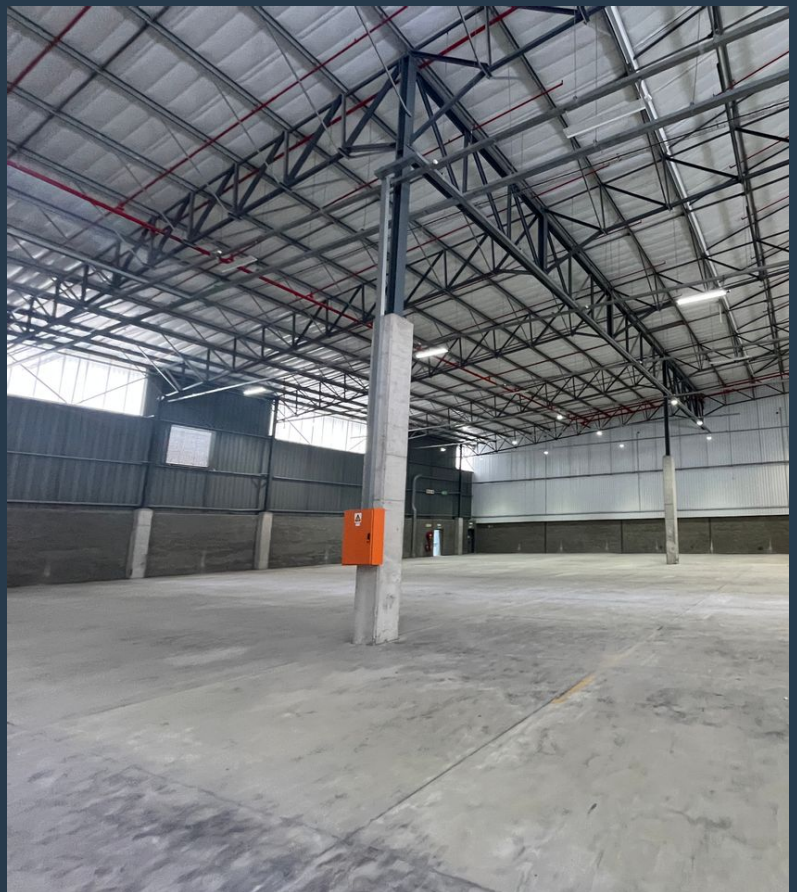


www.spire.co.za

TO LET



This impressive $\pm 6,075\text{m}^2$ warehouse features $\pm 5,320\text{m}^2$ of functional warehouse space and is designed for operational efficiency and flexibility. The fully raised floor is ideal for container loading and unloading, with 16 roller doors, including one dock leveler and one drive-in access point. Cantilever canopies equipped with sprinklers and lighting provide additional covered loading areas. The ground floor includes a reception area, various offices, and staff facilities. The first floor features a boardroom, additional offices, and a clean room previously used as a laboratory, which can be easily converted into additional office space. With an 800 KVA three-phase power supply, a full sprinkler system, and roof insulation, this property is...



WEB REF: SCL2183

Logan Du Pessis | 0736449934 | logand@spire.co.za

PROPERTY | WITH PURPOSE

R516,375 per month excl. VAT

R85 per m²



www.spire.co.za

WAREHOUSE TO LET IN MONTAGUE GARDENS



PROPERTY DETAILS

▲ Security

Yes

▲ Floor Size

6075m²

▲ Zoning

Industrial

WEB REF: SCL2183

Logan Du Pessis | 0736449934 | logand@spire.co.za

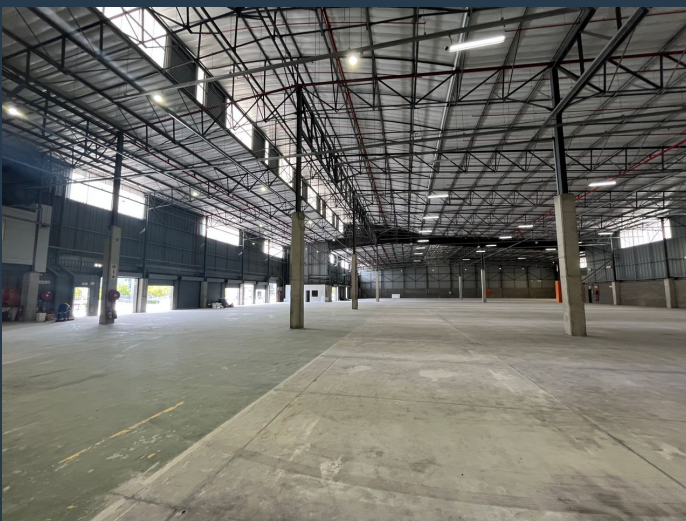
PROPERTY | WITH PURPOSE

R516,375 per month excl. VAT

R85 per m²



www.spire.co.za



CONTACT US



Logan Du Pessis
Agent

☎ (021) 6854020
📱 0736449934
✉ logand@spire.co.za



Kevin Hellyer
Candidate Property Practitioner

☎ (021) 6854020
📱 061 484 5578
✉ kevinh@spire.co.za

WEB REF: SCL2183

Logan Du Pessis | 0736449934 | logand@spire.co.za