

PROPERTY | WITH PURPOSE

R110,635 per month excl. VAT

R72 per m²

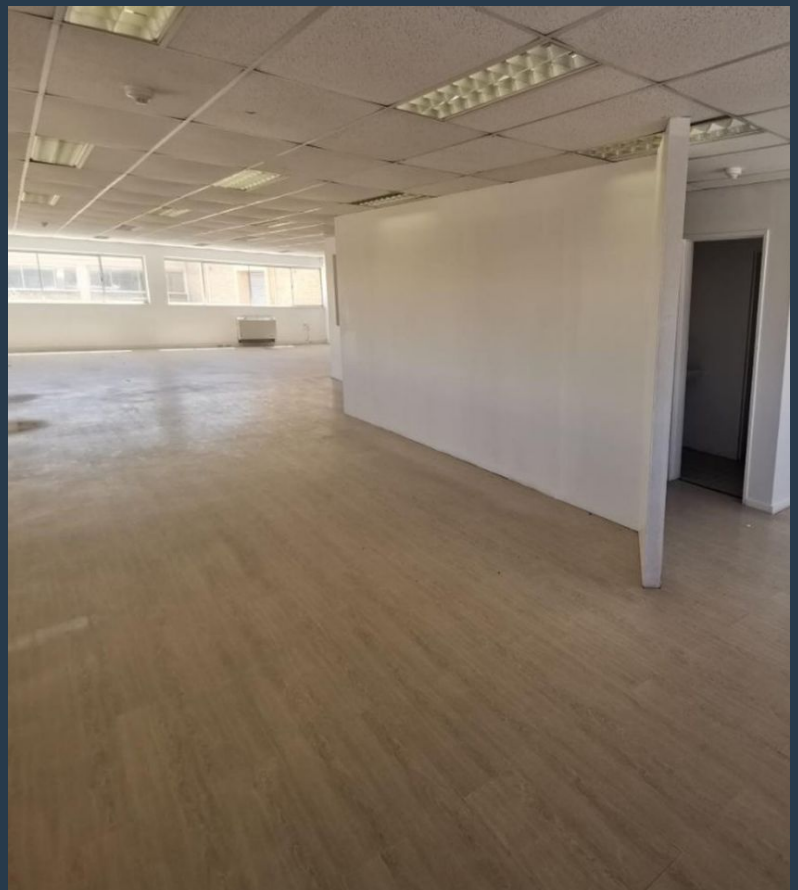


www.spire.co.za

TO LET



Warehouse space to rent in Montague Gardens Industrial Park. This industrial property is situated in a 24 hour security park on Montague Drive and is ideal for light manufacturing or storage and distribution. The warehouse currently has 160 AMPS, but there is additional capacity available in the park. This industrial property comprises of 251 sqm of office space and 904 sqm of warehouse space. The warehouse offers ample roof- and roller shutter clearance, front and side roller shutter access as well as only one internal column to maximize the warehouse floor space. This industrial park offers easy access for big trucks and ample parking. We have been helping businesses just like yours to find their perfect commercial retail or...



WEB REF: CL1327

Logan Du Pessis | 0736449934 | logand@spire.co.za

PROPERTY | WITH PURPOSE

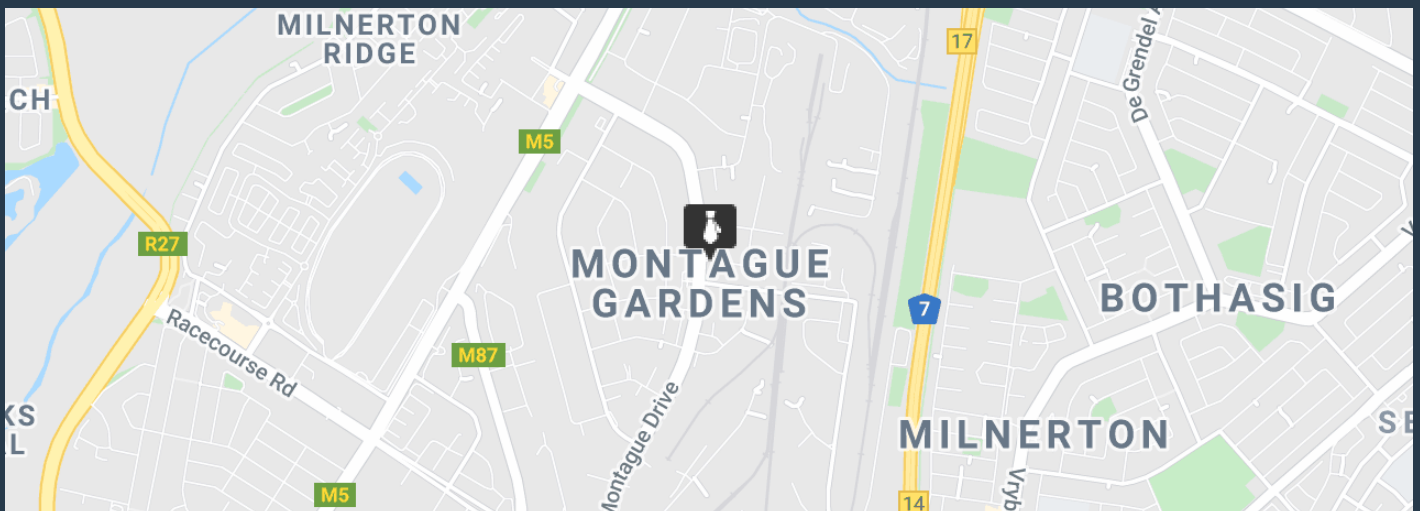
R110,635 per month excl. VAT

R72 per m²



www.spire.co.za

1,526 M² WAREHOUSE TO RENT MONTAGUE GARDENS INDUSTRIAL PARK



PROPERTY DETAILS

▲ Security	Yes	▲ Floor Size	1526m ²
▲ Air Conditioning	Yes	▲ Land Size	1526
		▲ Zoning	Industrial

WEB REF: CL1327

Logan Du Pessis | 0736449934 | logand@spire.co.za

PROPERTY | WITH PURPOSE

R110,635 per month excl. VAT

R72 per m²



www.spire.co.za



CONTACT US



Logan Du Pessis

Agent

☎ (021) 6854020

📱 0736449934

✉ logand@spire.co.za



Kevin Hellyer

Candidate Property Practitioner

☎ (021) 6854020

📱 061 484 5578

✉ kevinh@spire.co.za

WEB REF: CL1327

Logan Du Pessis | 0736449934 | logand@spire.co.za