

PROPERTY | WITH PURPOSE

**R9,000** per month excl. VAT

R50 per m<sup>2</sup>

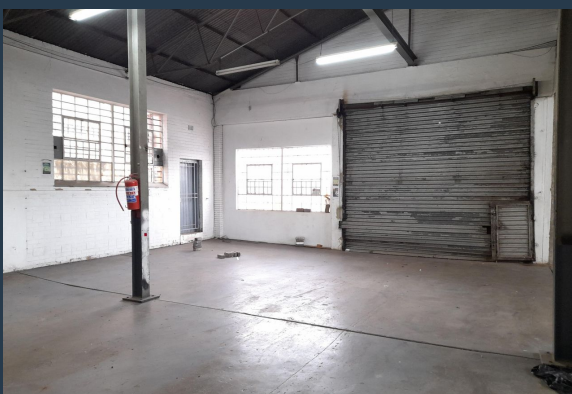


[www.spire.co.za](http://www.spire.co.za)

**TO LET**



180m<sup>2</sup> warehouse to rent in Selby, Park Central, the warehouse offers of an open plan warehouse, a neat office component and ablutions. This property has a roller shutter door with direct access to the unit. There is ample natural light on the property flowing into the open plan warehouse. The roof is approximately 6m to eaves, and three Phase power. The unit is well located in Selby with direct access to the M1 going north and south of Johannesburg and also the M2 leading east and west of Johannesburg. We have been helping businesses just like yours to find their perfect industrial spaces. Our team of property professionals are ready to find your perfect space in the Johannesburg. We have a longstanding relationship with the top...



WEB REF: CL4120

Nadeema Chothia | 083 305 5354 | [nademac@spire.co.za](mailto:nademac@spire.co.za)

PROPERTY | WITH PURPOSE

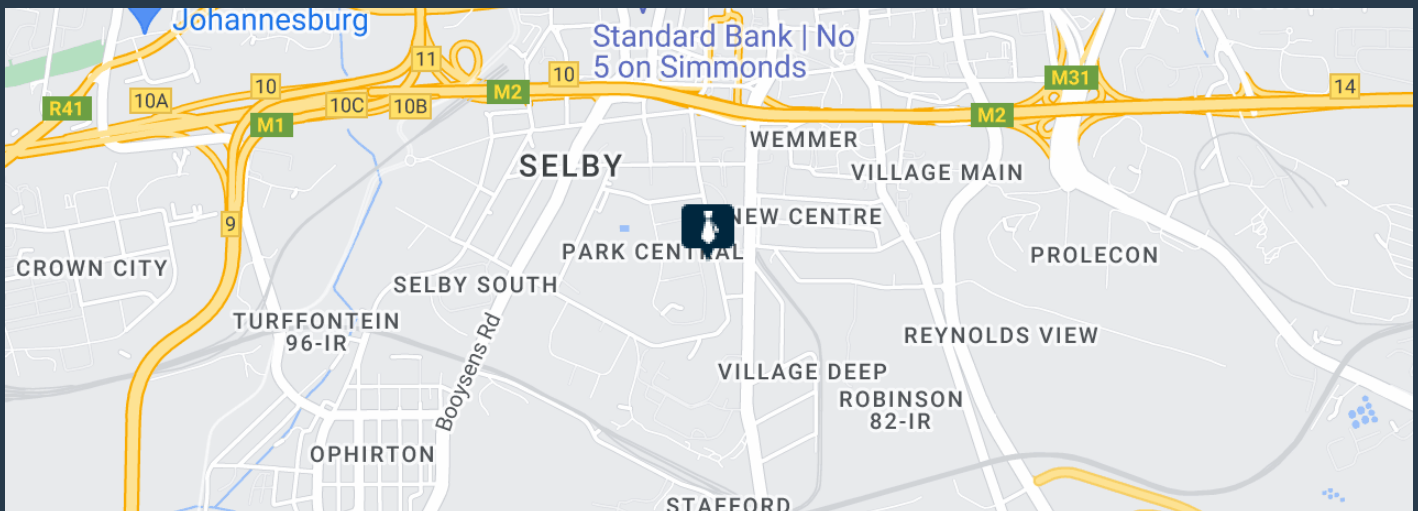
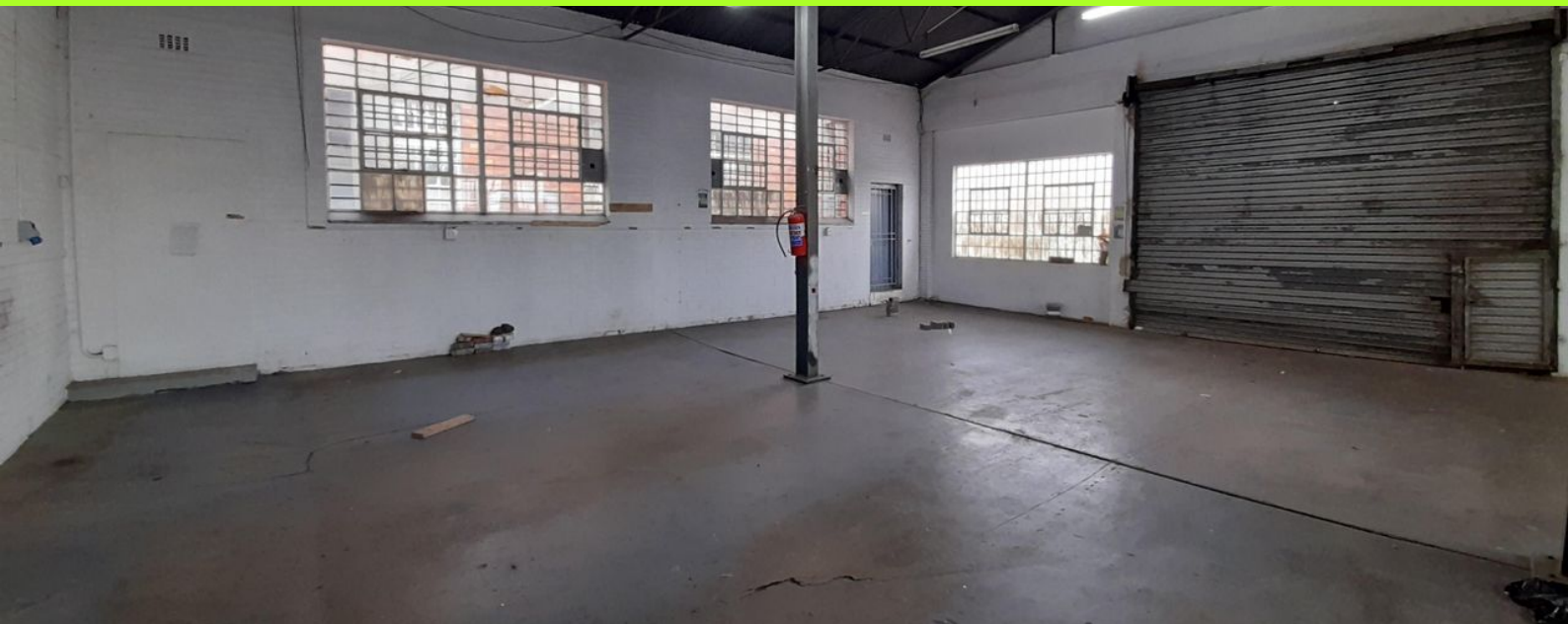
**R9,000** per month excl. VAT

R50 per m<sup>2</sup>



[www.spire.co.za](http://www.spire.co.za)

## WAREHOUSE TO RENT IN SELBY, JOHANNESBURG



### PROPERTY DETAILS

- ▲ Floor Size 180m<sup>2</sup>
- ▲ Land Size 2000
- ▲ Zoning Industrial

WEB REF: CL4120

Nadeema Chothia | 083 305 5354 | [nadeemac@spire.co.za](mailto:nadeemac@spire.co.za)



PROPERTY | WITH PURPOSE

**R9,000** per month excl. VAT

R50 per m<sup>2</sup>



[www.spire.co.za](http://www.spire.co.za)




## CONTACT US



**Nadeema Chothia**

Agent

 (011) 2685871

 083 305 5354

 [nadeemac@spire.co.za](mailto:nadeemac@spire.co.za)

WEB REF: CL4120

Nadeema Chothia | 083 305 5354 | [nadeemac@spire.co.za](mailto:nadeemac@spire.co.za)