

PROPERTY | WITH PURPOSE

R50,000 per month excl. VAT

R50 per m²

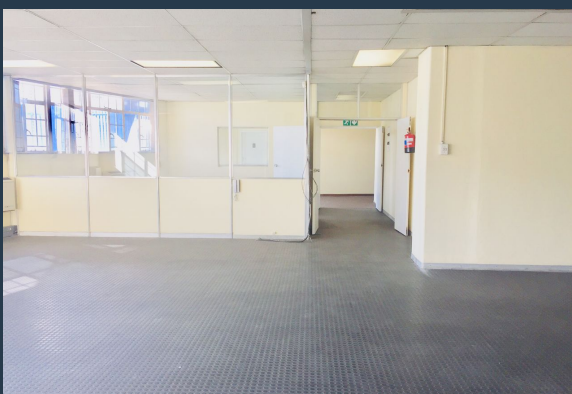


www.spire.co.za

TO LET



1000 Sqm Warehouse Space Available To Rent in Kew Industrial, Johannesburg. Very neat and modern industrial unit In a very secure multi tenanted building, this warehouse is situated on the ground floor with access from the main gate. It consists of multiple partitioned offices and a 2 Ton goods lift, there is direct access for a truck from the street, straight into the warehouse. Great access to Grayston drives as well as the M1, N1 and N3 highways. This warehouse also comes with both male and female bathroom facilities, showers and a basin, there's public transport available in the area. We have been helping businesses just like yours to find their perfect Commercial retail or industrial space. Our team of property professionals are...



WEB REF: SCL442

Nadeema Chothia | 083 305 5354 | nadeemac@spire.co.za

PROPERTY | WITH PURPOSE

R50,000 per month excl. VAT

R50 per m²



www.spire.co.za

WAREHOUSE SPACE TO RENT KEW, JOHANNESBURG



PROPERTY DETAILS

- ▲ Floor Size 1000m²
- ▲ Zoning Industrial

WEB REF: SCL442

Nadeema Chothia | 083 305 5354 | nadeemac@spire.co.za

PROPERTY | WITH PURPOSE

R50,000 per month excl. VAT

R50 per m²



www.spire.co.za



CONTACT US



Nadeema Chothia

Agent

☎ (011) 2685871

📱 083 305 5354

✉ nadeemac@spire.co.za

WEB REF: SCL442

Nadeema Chothia | 083 305 5354 | nadeemac@spire.co.za