

PROPERTY | WITH PURPOSE

R25,844 per month excl. VAT

R28 per m<sup>2</sup>



[www.spire.co.za](http://www.spire.co.za)

TO LET



BEN 14

82 Main Reef Road

Warehouse to rent in the heart of Benrose, Johannesburg, the warehouse component is 862m<sup>2</sup> with the office component at 61m<sup>2</sup> totalling 923m<sup>2</sup>. The unit offers an open plan ground floor warehouse area, upstairs area for storage, machine location or the like, reception area and ablutions. There is three phase power, a roller shutter door, Dock level and own yard. The property enjoys a prime central location in a secure business park, with quick and convenient access to the M2, M31 and M19 highways both north and South bound. It has excellent truck accessibility, 24hr security and area cleaning. Being right on the main reef road, the property enjoys easy access to public transportation. We have been helping businesses just like yours to find...



WEB REF: SCL1215

Nadeema Chothia | 083 305 5354 | [nadeemac@spire.co.za](mailto:nadeemac@spire.co.za)



PROPERTY | WITH PURPOSE

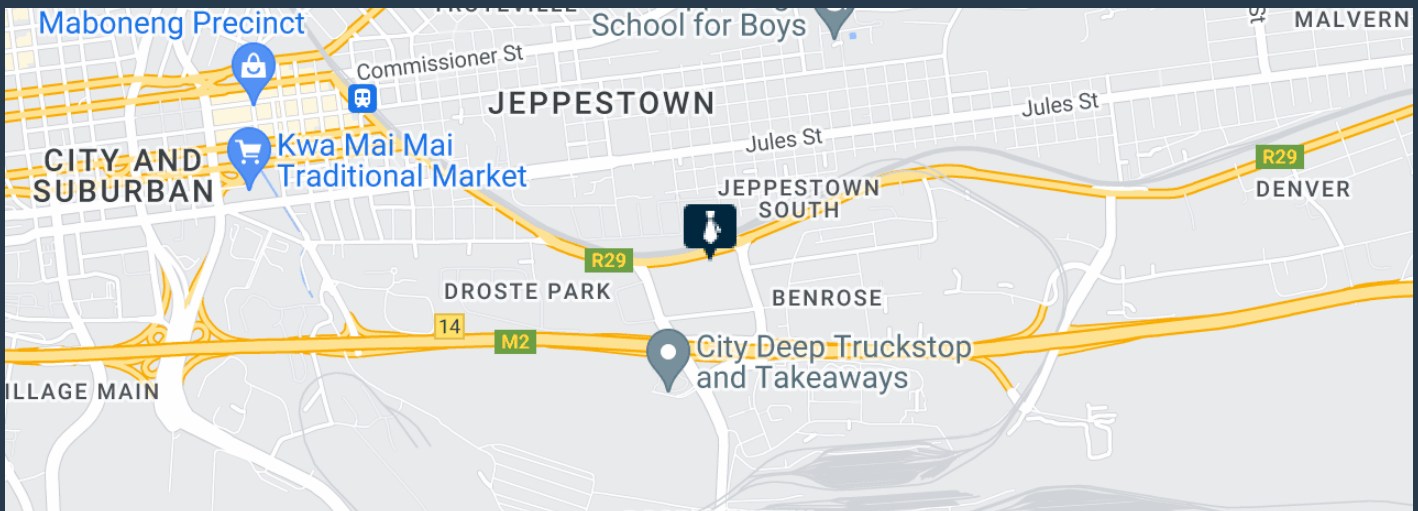
**R25,844** per month excl. VAT

R28 per m<sup>2</sup>



[www.spire.co.za](http://www.spire.co.za)

## WAREHOUSE TO RENT IN BENROSE, JOHANNESBURG



### PROPERTY DETAILS

- ▲ Floor Size 923m<sup>2</sup>
- ▲ Land Size 10000
- ▲ Zoning Industrial

WEB REF: SCL1215

Nadeema Chothia | 083 305 5354 | [nadeemac@spire.co.za](mailto:nadeemac@spire.co.za)

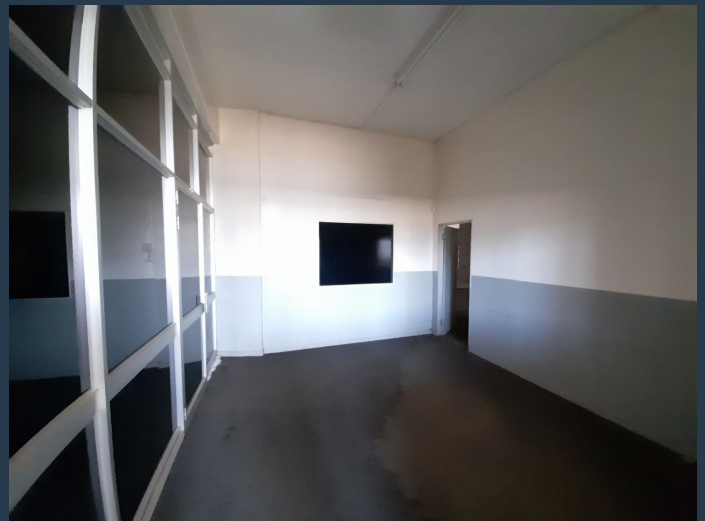
PROPERTY | WITH PURPOSE

**R25,844** per month excl. VAT

R28 per m<sup>2</sup>



[www.spire.co.za](http://www.spire.co.za)



## CONTACT US



**Nadeema Chothia**

Agent

 (011) 2685871

 083 305 5354

 [nadeemac@spire.co.za](mailto:nadeemac@spire.co.za)

WEB REF: SCL1215

Nadeema Chothia | 083 305 5354 | [nadeemac@spire.co.za](mailto:nadeemac@spire.co.za)