

PROPERTY | WITH PURPOSE

**R991,440** per month excl. VAT

R68 per m<sup>2</sup>



[www.spire.co.za](http://www.spire.co.za)

**TO LET**



AAA Grade warehouse strategically located on the well-known Barbara Road with excellent visibility and exposure behind the 2.6m high ClearVu fence with infra-red cameras and fibre-optic detection systems in Elandsfontein, Germiston, in close proximity to OR Tambo with easy access to the R24, N12, N3 and the R21 highways, on Barbara Road. This state-of-the-art property offers ample light industrial warehouse space of 12456m<sup>2</sup> with a well-fitting office component of 2124 m<sup>2</sup>, reception, offices, kitchenette, boardroom and meeting rooms and generous ablution facilities. All this is offered in this Fibre-reinforced jointless construction 14580m<sup>2</sup> warehouse, engineer-designed FM2 special flatness floors with a loading bearing capacity of 35mPa,...



WEB REF: CL3897

Nadeema Chothia | 083 305 5354 | [nadeemac@spire.co.za](mailto:nadeemac@spire.co.za)

PROPERTY | WITH PURPOSE

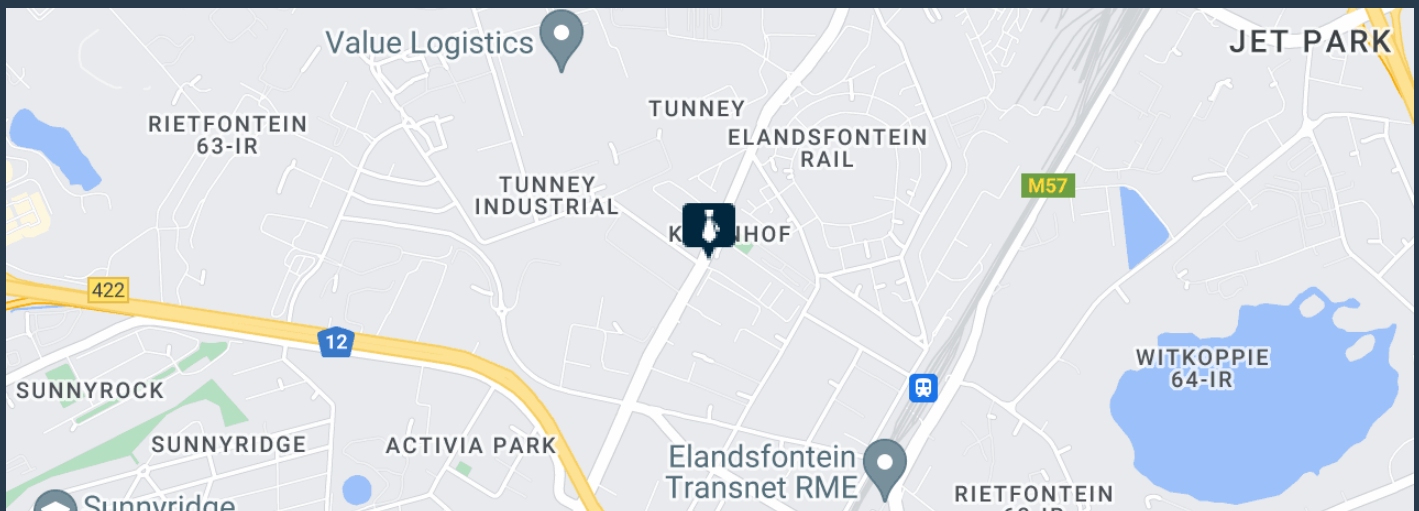
**R991,440** per month excl. VAT

R68 per m<sup>2</sup>



[www.spire.co.za](http://www.spire.co.za)

## WAREHOUSE TO LET IN RIET FONTEIN, HENVILLE, GERMISTON



### PROPERTY DETAILS

▲ Security	Yes	▲ Floor Size	14580m <sup>2</sup>
▲ Air Conditioning	Yes	▲ Land Size	44581
		▲ Zoning	Industrial

WEB REF: CL3897

Nadeema Chothia | 083 305 5354 | [nadeemac@spire.co.za](mailto:nadeemac@spire.co.za)

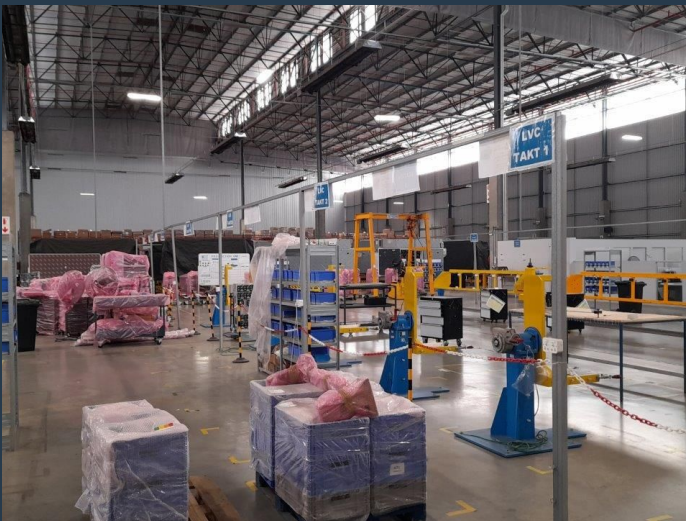
PROPERTY | WITH PURPOSE

**R991,440** per month excl. VAT

R68 per m<sup>2</sup>



[www.spire.co.za](http://www.spire.co.za)



## CONTACT US



**Nadeema Chothia**

Agent

 (011) 2685871

 083 305 5354

 [nadeemac@spire.co.za](mailto:nadeemac@spire.co.za)

WEB REF: CL3897

Nadeema Chothia | 083 305 5354 | [nadeemac@spire.co.za](mailto:nadeemac@spire.co.za)