

PROPERTY | WITH PURPOSE

**R10,800** per month excl. VAT

R54 per m<sup>2</sup>

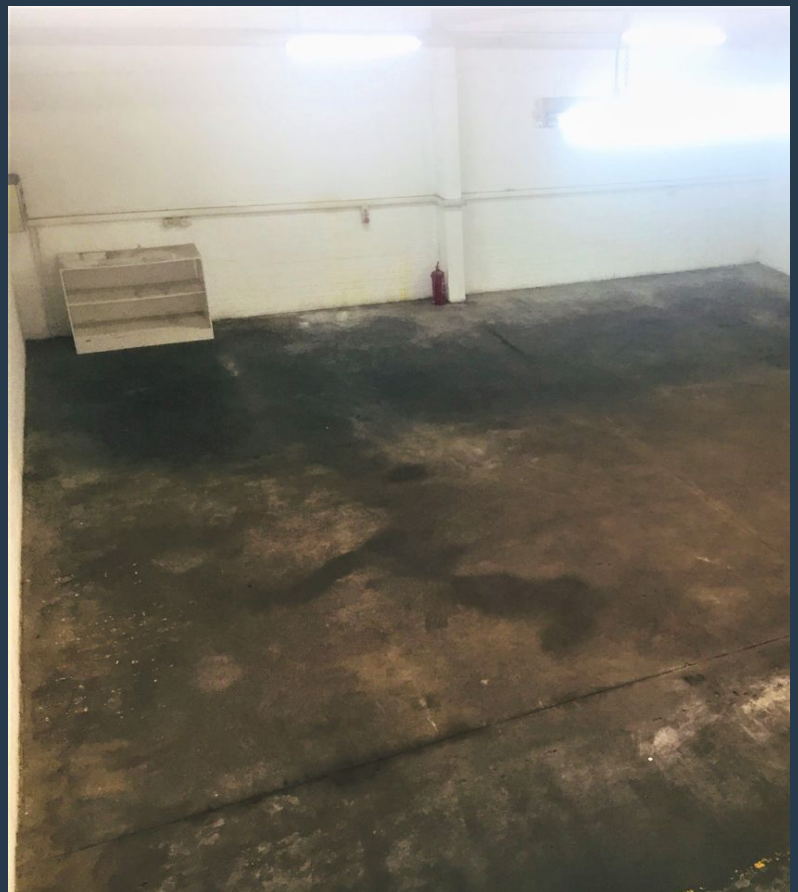


[www.spire.co.za](http://www.spire.co.za)

**TO LET**



200 Sqm Warehouse Space to Rent in 18 Edendale Road, Eastleigh, Johannesburg. This unit is numbered as unit 27, It consists of a mezzanine with office components, kitchenette, and male and female ablution facilities. The warehouse offers; roller door access, three phase power, good natural lighting, and good clear height to the eaves. There is ample secure parking available on site. This light mini-industrial park is located in the heart of Eastleigh, a well-established industrial node in the heart of Edenvale easily accessible and in close proximity to the N3 highway as well as other major arterial routes. We have been helping businesses just like yours to find their perfect industrial space. Our team of property professionals are ready...



WEB REF: SCL249

Nadeema Chothia | 083 305 5354 | [nadeemac@spire.co.za](mailto:nadeemac@spire.co.za)

PROPERTY | WITH PURPOSE

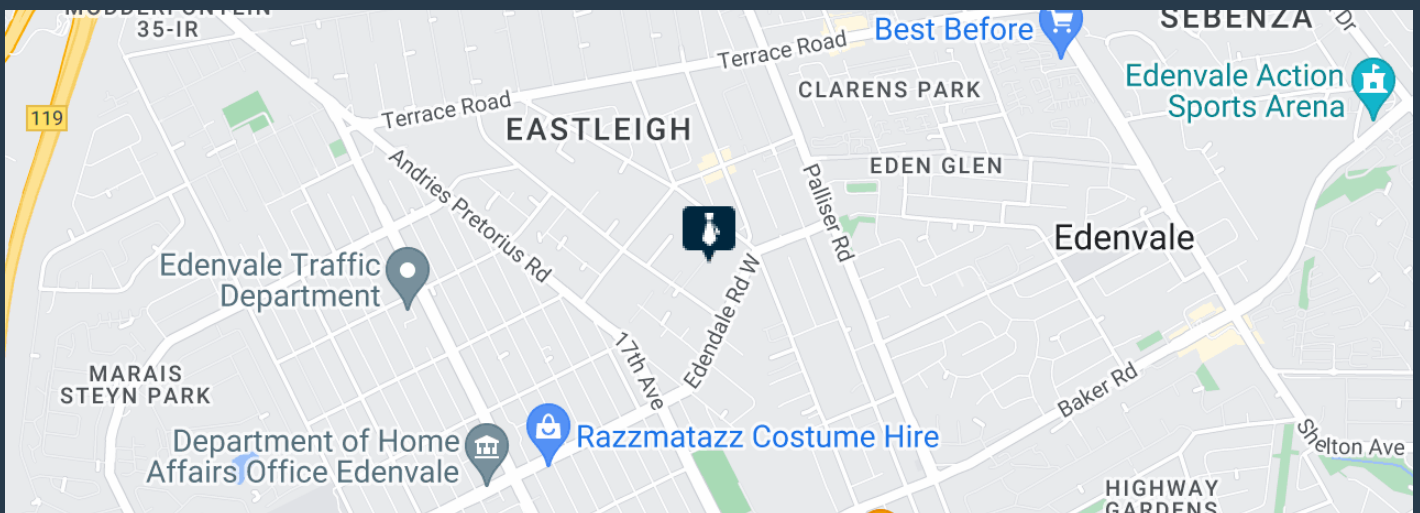
**R10,800** per month excl. VAT

R54 per m<sup>2</sup>



[www.spire.co.za](http://www.spire.co.za)

## WAREHOUSE SPACE TO RENT EASTLEIGH, EDENVALE



### PROPERTY DETAILS

- ▲ Floor Size 200m<sup>2</sup>
- ▲ Zoning Industrial

WEB REF: SCL249

Nadeema Chothia | 083 305 5354 | [nadeemac@spire.co.za](mailto:nadeemac@spire.co.za)



PROPERTY | WITH PURPOSE

**R10,800** per month excl. VAT

R54 per m<sup>2</sup>



[www.spire.co.za](http://www.spire.co.za)



## CONTACT US



**Nadeema Chothia**

Agent

☎ (011) 2685871

📱 083 305 5354

✉ [nadeemac@spire.co.za](mailto:nadeemac@spire.co.za)

WEB REF: SCL249

Nadeema Chothia | 083 305 5354 | [nadeemac@spire.co.za](mailto:nadeemac@spire.co.za)