

PROPERTY | WITH PURPOSE

R376,200 per month excl. VAT

POA

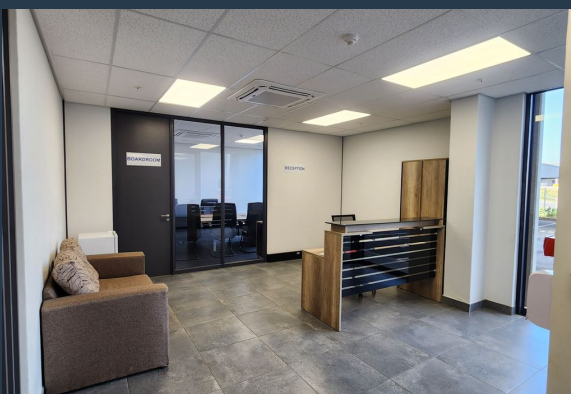
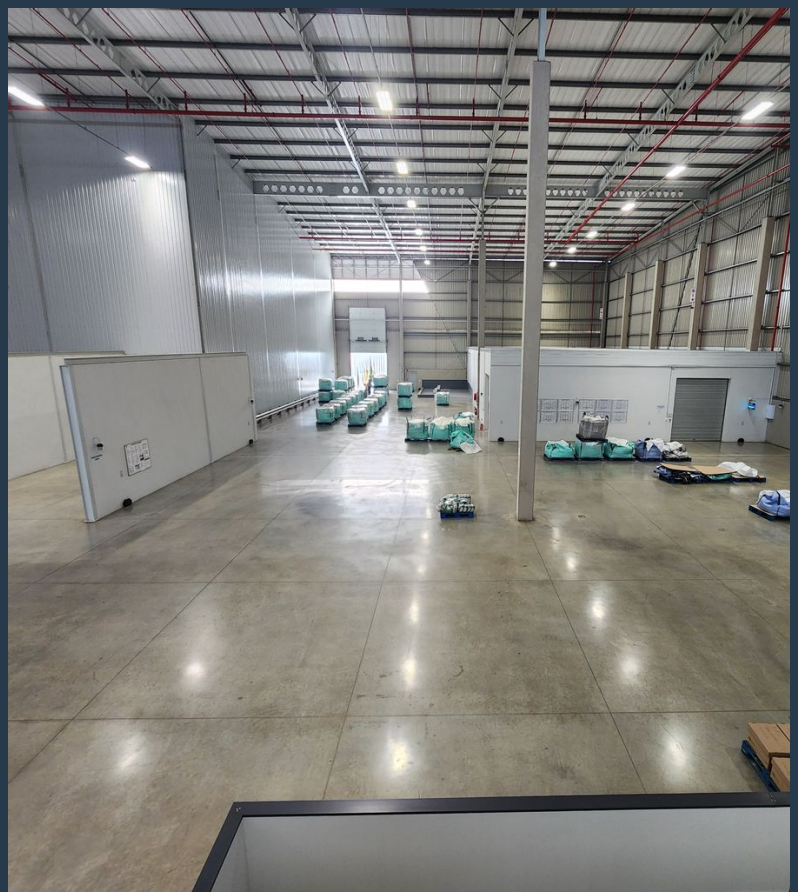


www.spire.co.za

TO LET



Approx 3400sqm of warehouse space in Riverhorse valley in an industrial park. The Park is well managed and secure with security manned entrance and exit gates. The unit has high ceilings approx. 14 meters eaves. An office Component of approx. 215sqm. 32 Parking bays, plus Docks. about 4 roller shutter doors. The development is a AAA Grade Industrial Park that sets a new benchmark for the region, and we are thrilled to have completed the project Riverhorse Valley lies along the N2 freeway, providing easy access to major transportation routes. It's close to the harbor, making import and export operations efficient. Being near the ports is advantageous for businesses involved in warehousing, distribution, and logistics. It streamlines...



WEB REF: SCL1837

Mac Khoza | +27845722858 | mack@spire.co.za

PROPERTY | WITH PURPOSE

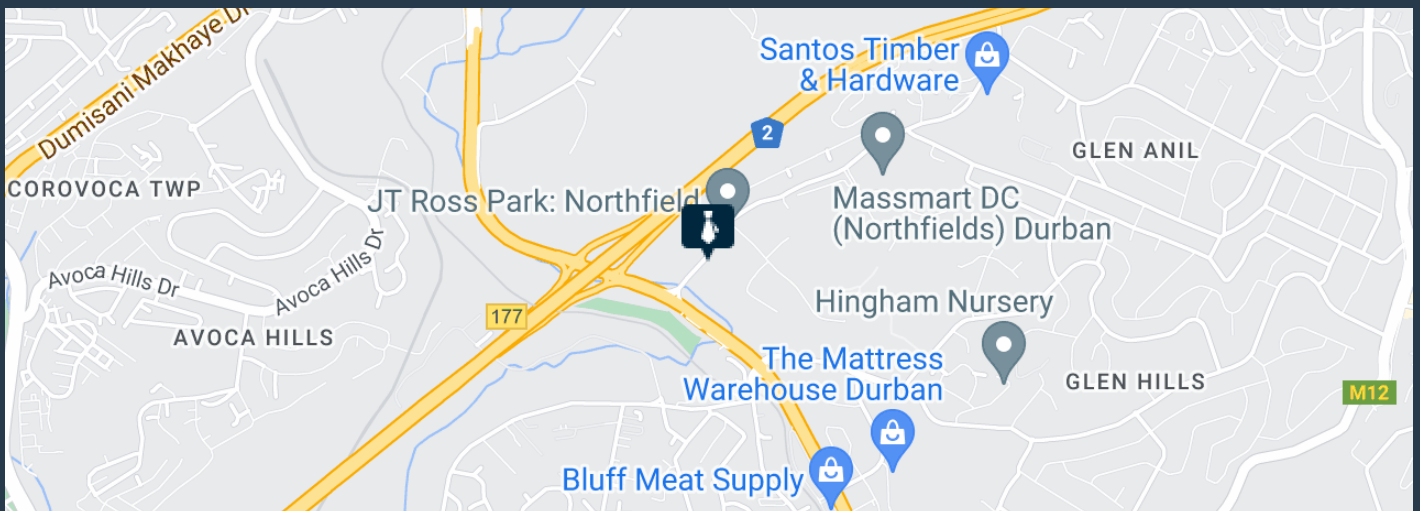
R376,200 per month excl. VAT

POA



www.spire.co.za

APPROX 3400SQM INDUSTRIAL WAREHOUSE AVAILABLE FOR RENTAL IN...



PROPERTY DETAILS

- | | | | |
|--------------------|-----|--------------|--------------------|
| ▲ Security | Yes | ▲ Floor Size | 3450m ² |
| ▲ Air Conditioning | Yes | ▲ Zoning | Industrial |

WEB REF: SCL1837

Mac Khoza | +27845722858 | mack@spire.co.za

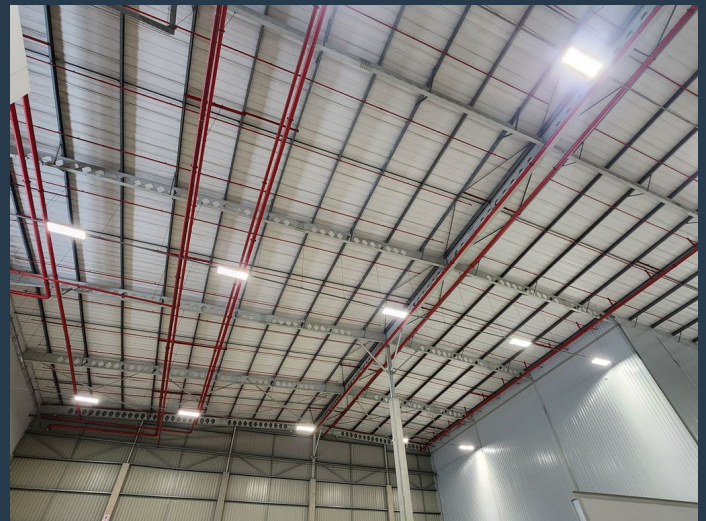
PROPERTY | WITH PURPOSE

R376,200 per month excl. VAT

POA



www.spire.co.za




CONTACT US



Mac Khoza

Agent

 (031) 5368243

 +27845722858

 mack@spire.co.za

WEB REF: SCL1837

Mac Khoza | +27845722858 | mack@spire.co.za