

PROPERTY | WITH PURPOSE

R41,752 per month excl. VAT

R87 per m²

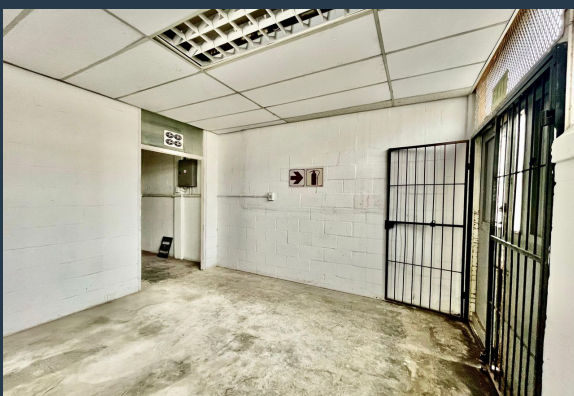


www.spire.co.za

TO LET



475 m² Warehouse for Rent in Retreat Discover this exceptional 475 m² warehouse space located in the heart of Retreat. Situated on the ground floor, this fully fitted out warehouse is ready for immediate occupancy. Designed for convenience and efficiency, the space includes ample parking for tenants, ensuring smooth operations and accessibility. Benefits of Renting Warehouses in Retreat: Renting a warehouse in Retreat offers significant advantages for businesses. The area is known for its strategic location, providing easy access to major transport routes, ensuring efficient logistics and distribution. Additionally, Retreat boasts a vibrant industrial community, fostering opportunities for networking and collaboration with like-minded...



WEB REF: SCL1983

Logan Du Pessis | 0736449934 | logand@spire.co.za

PROPERTY | WITH PURPOSE

R41,752 per month excl. VAT

R87 per m²



www.spire.co.za

475M2 WAREHOUSE FOR RENT IN RETREAT



PROPERTY DETAILS

- ▲ Floor Size 475m²
- ▲ Zoning Industrial

WEB REF: SCL1983

Logan Du Pessis | 0736449934 | logand@spire.co.za

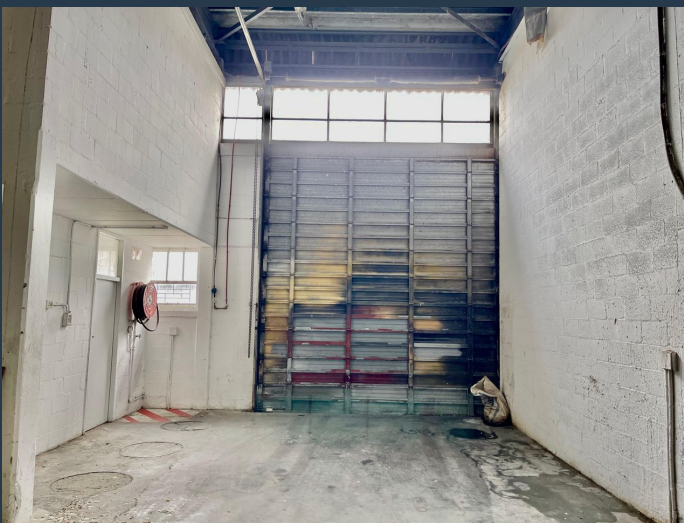
PROPERTY | WITH PURPOSE

R41,752 per month excl. VAT

R87 per m²



www.spire.co.za



CONTACT US



Logan Du Pessis
Agent

☎ (021) 6854020
📱 0736449934
✉ logand@spire.co.za



Kevin Hellyer
Candidate Property Practitioner

☎ (021) 6854020
📱 061 484 5578
✉ kevinh@spire.co.za

WEB REF: SCL1983

Logan Du Pessis | 0736449934 | logand@spire.co.za