

PROPERTY | WITH PURPOSE

**R690,830** per month excl. VAT

R70 per m<sup>2</sup>

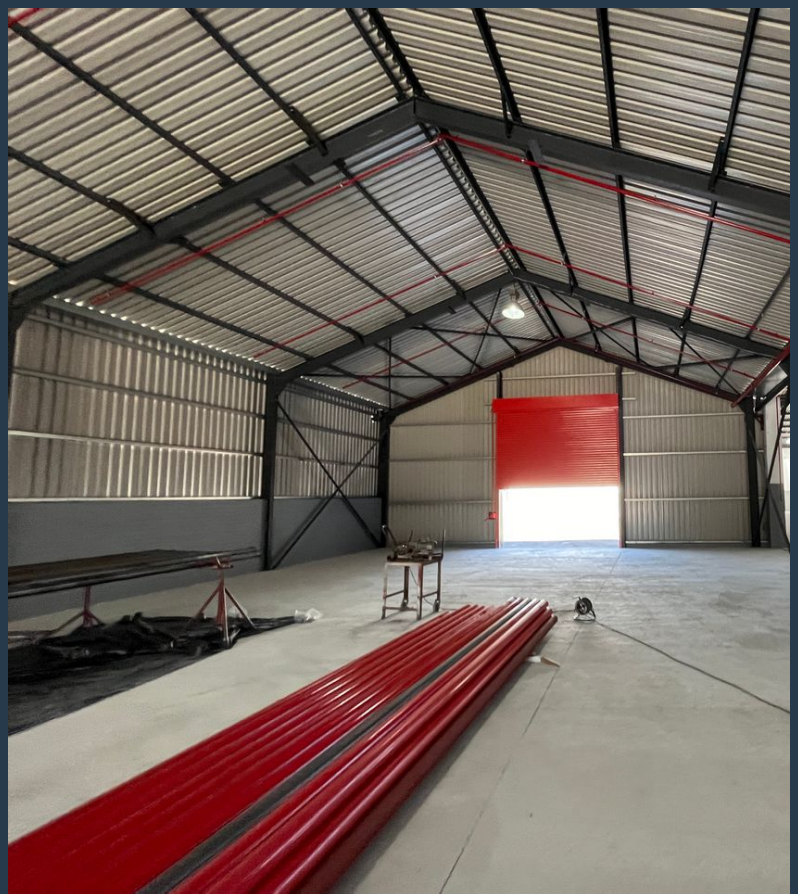


[www.spire.co.za](http://www.spire.co.za)

**TO LET**



9869m<sup>2</sup> Modern Warehouse in Epping Industrial for Lease. This redeveloped warehouse offers a spacious 9869m<sup>2</sup> area, perfect for modern logistics operations. Key features include six roller shutter doors (4.5m height, 4m width) for efficient loading and unloading, with a height to eaves of 5.7m allowing for substantial vertical storage. The facility is equipped with 3-phase power, fire sprinklers, and an insulated roof to ensure the safety and climate control of your goods. Additionally, the warehouse boasts a private yard, interlink truck access, and a 3-ton hoist lift for added convenience. Inside, the premises provide well-designed office space with a reception area, kitchenette, and ablution facilities, ensuring a productive and...



WEB REF: SCL2148

Logan Du Pessis | 0736449934 | [logand@spire.co.za](mailto:logand@spire.co.za)

PROPERTY | WITH PURPOSE

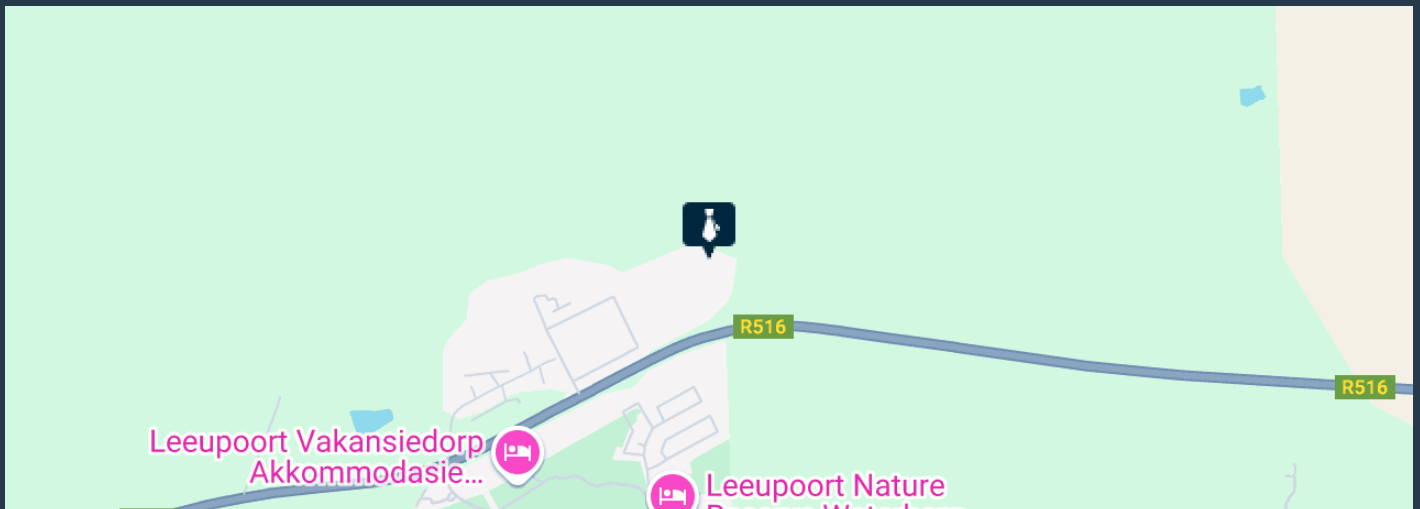
**R690,830** per month excl. VAT

R70 per m<sup>2</sup>



[www.spire.co.za](http://www.spire.co.za)

## WAREHOUSE TO LET IN EPPING



### PROPERTY DETAILS

- ▲ Floor Size 9869m<sup>2</sup>
- ▲ Zoning Industrial

WEB REF: SCL2148

Logan Du Pessis | 0736449934 | [logand@spire.co.za](mailto:logand@spire.co.za)



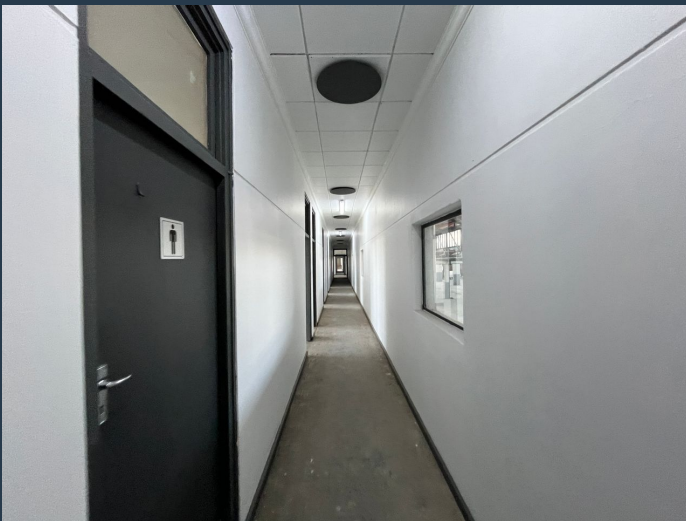
PROPERTY | WITH PURPOSE

**R690,830** per month excl. VAT

R70 per m<sup>2</sup>



[www.spire.co.za](http://www.spire.co.za)



## CONTACT US



**Logan Du Pessis**

Agent

☎ (021) 6854020

📱 0736449934

✉ [logand@spire.co.za](mailto:logand@spire.co.za)



**Kevin Hellyer**

Candidate Property Practitioner

☎ (021) 6854020

📱 061 484 5578

✉ [kevinh@spire.co.za](mailto:kevinh@spire.co.za)

WEB REF: SCL2148

Logan Du Pessis | 0736449934 | [logand@spire.co.za](mailto:logand@spire.co.za)