

PROPERTY | WITH PURPOSE

R243,230 per month excl. VAT

R65 per m<sup>2</sup>

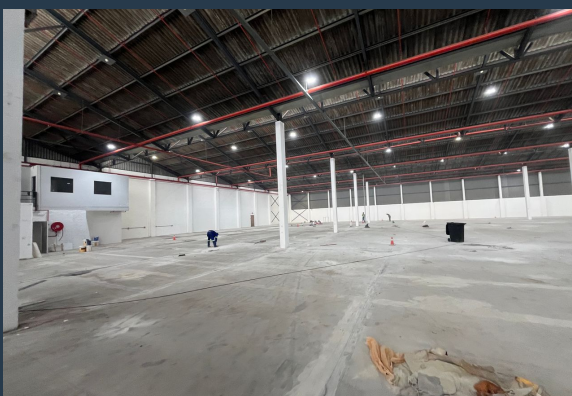
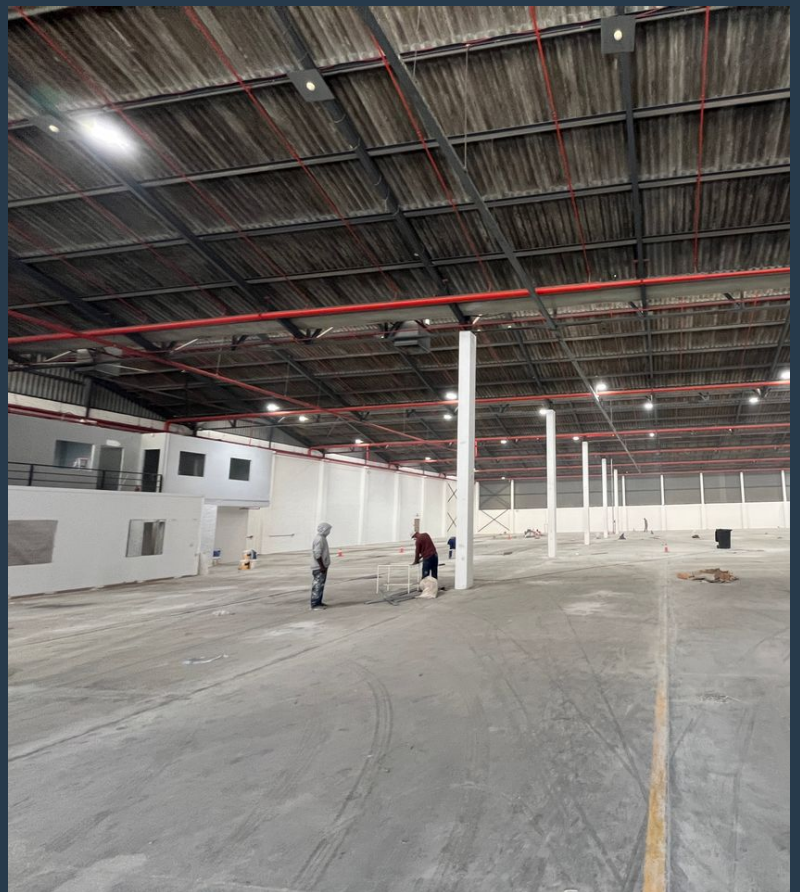


[www.spire.co.za](http://www.spire.co.za)

TO LET



3,742m<sup>2</sup> Secure Industrial Space for Lease in Epping. Located at 32 Packer Avenue, this 3,742m<sup>2</sup> A-Grade industrial space in Epping Industrial 2 offers an ideal opportunity for businesses seeking a secure and well-connected facility. With 7m height to the eaves and ample natural light, this space is built for efficiency. Featuring 3 large 4.8m high roller shutter doors, the site facilitates easy access for trucks. The property also includes a fully sprinkled premises compliant with ASIB standards, a spacious concrete yard with open parking bays, and 24-hour access-controlled security for added safety. The facility boasts office spaces with a view of the industrial area, complemented by a kitchen and bathrooms, a large canteen, changing...



WEB REF: SCL2140

Logan Du Pessis | 0736449934 | [logand@spire.co.za](mailto:logand@spire.co.za)

PROPERTY | WITH PURPOSE

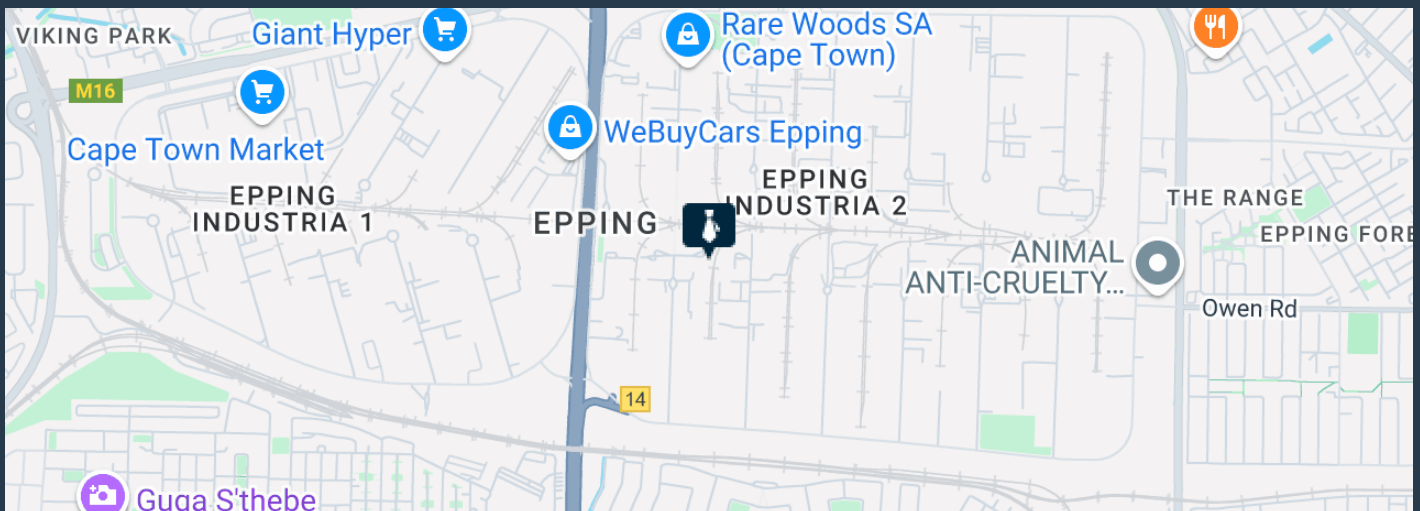
**R243,230** per month excl. VAT

R65 per m<sup>2</sup>



[www.spire.co.za](http://www.spire.co.za)

## WAREHOUSE TO LET IN EPPING | 32 PACKER AVENUE



### PROPERTY DETAILS

- ▲ Floor Size 3742m<sup>2</sup>
- ▲ Zoning Industrial

WEB REF: SCL2140

Logan Du Pessis | 0736449934 | [logand@spire.co.za](mailto:logand@spire.co.za)

PROPERTY | WITH PURPOSE

**R243,230** per month excl. VAT

R65 per m<sup>2</sup>



[www.spire.co.za](http://www.spire.co.za)



## CONTACT US



**Logan Du Pessis**

Agent

☎ (021) 6854020

📱 0736449934

✉ [logand@spire.co.za](mailto:logand@spire.co.za)



**Kevin Hellyer**

Candidate Property Practitioner

☎ (021) 6854020

📱 061 484 5578

✉ [kevinh@spire.co.za](mailto:kevinh@spire.co.za)

WEB REF: SCL2140

Logan Du Pessis | 0736449934 | [logand@spire.co.za](mailto:logand@spire.co.za)