

PROPERTY | WITH PURPOSE

R272,680 per month excl. VAT

R85 per m²



www.spire.co.za

TO LET



3208 m² Factory for Rent in Capricorn Park Discover an exceptional industrial space in the sought after Capricorn Park, offering 3208 m² of versatile ground and first-floor space. Fully fitted out and ready for immediate occupancy, this property boasts modern amenities including a full kitchen, a bar, braai and ample parking for tenants. The facility is designed for efficiency and productivity, featuring two large roller shutter doors and two gantry cranes, ideal for heavy lifting and streamlined operations. Whether you're looking to expand your manufacturing capabilities or establish a new base of operations, this property provides the perfect foundation for your business's growth and success. Capricorn Park is an ideal location for...



WEB REF: SCL2011

Logan Du Pessis | 0736449934 | logand@spire.co.za

PROPERTY | WITH PURPOSE

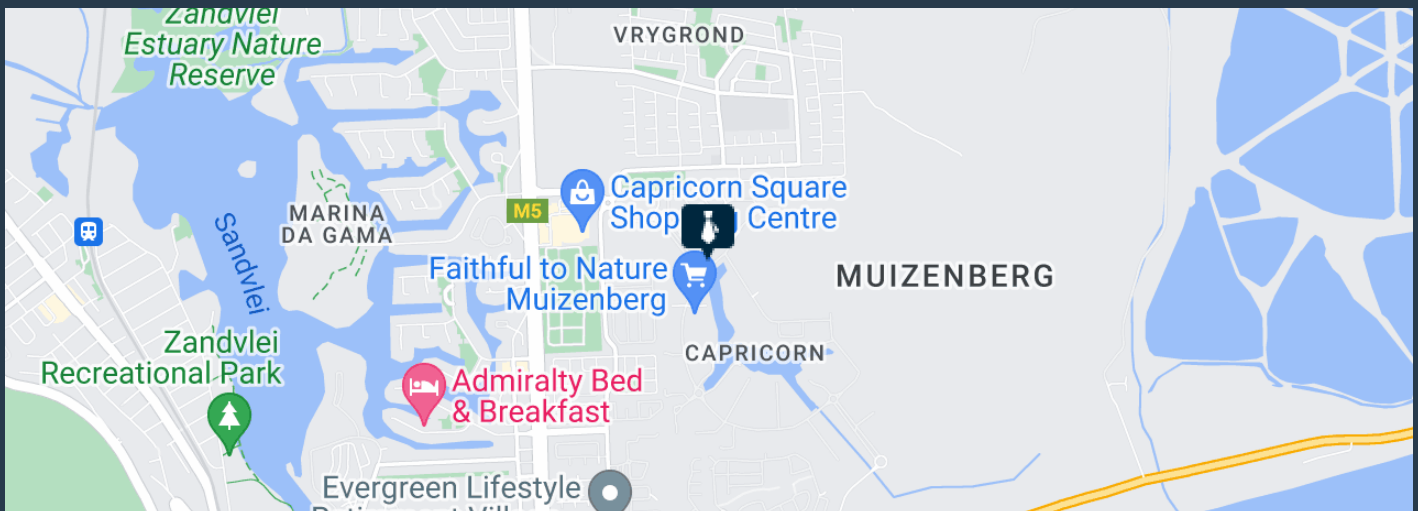
R272,680 per month excl. VAT

R85 per m²



www.spire.co.za

3208 M² FACTORY FOR RENT IN CAPRICORN PARK



PROPERTY DETAILS

- ▲ Floor Size 3208m²
- ▲ Zoning Industrial

WEB REF: SCL2011

Logan Du Pessis | 0736449934 | logand@spire.co.za

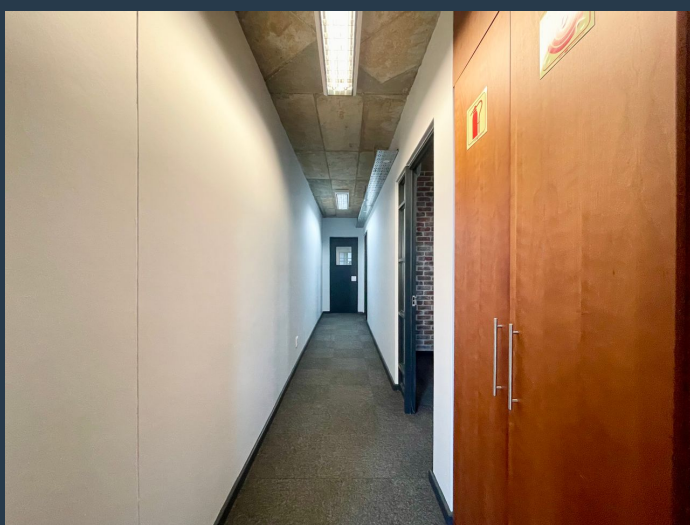
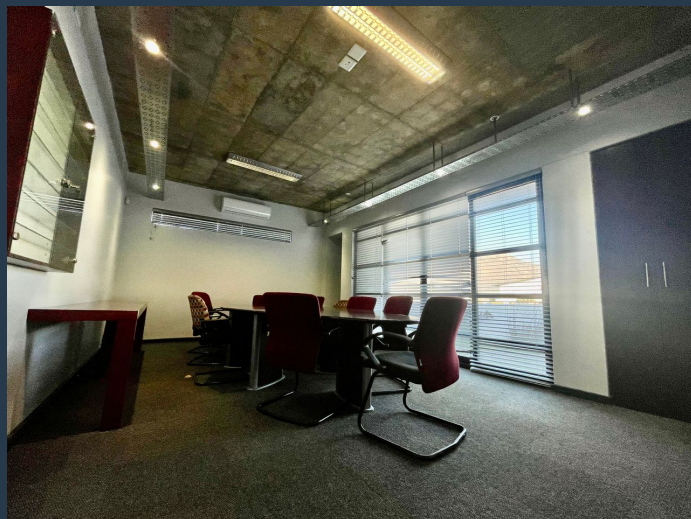
PROPERTY | WITH PURPOSE

R272,680 per month excl. VAT

R85 per m²



www.spire.co.za



CONTACT US



Logan Du Pessis
Agent

☎ (021) 6854020
📱 0736449934
✉ logand@spire.co.za



Kevin Hellyer
Candidate Property Practitioner

☎ (021) 6854020
📱 061 484 5578
✉ kevinh@spire.co.za