

PROPERTY | WITH PURPOSE

R20,446 per month excl. VAT

R52 per m²

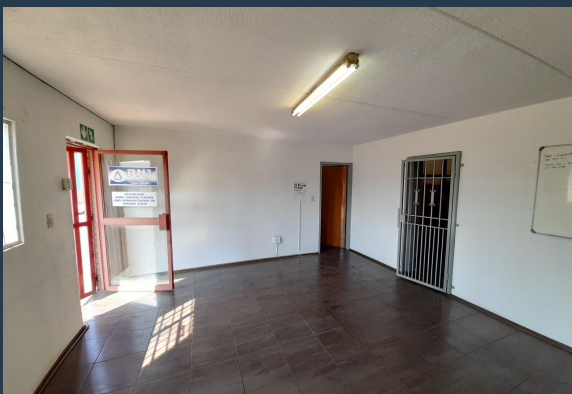


www.spire.co.za

TO LET



Jay industrial Park, a warehouse to rent in Jet Park, Boksburg. The property is just off Kelly Road and has easy access from most main roads including the R21,R24,M57 and the N12, as well as public transportation routes. It is only about 10 minutes from OR Tambo international. The warehouse offers an open plan area with approximately 6m to eaves high an office component, ablutions, a mezzanine and two large extraction fans. There is a 5m high roller shutter door on ramp, and 80 Amps of three phase power. There is easy access also for staff as the park is in close proximity to a taxi rank and train station. We have been helping businesses just like yours to find their perfect, industrial spaces. Our team of property professionals are...



WEB REF: CL4139

Nadeema Chothia | 083 305 5354 | nadeemac@spire.co.za

PROPERTY | WITH PURPOSE

R20,446 per month excl. VAT

R52 per m²



www.spire.co.za

WAREHOUSE TO RENT IN JET PARK, BOKSBURG



PROPERTY DETAILS

- ▲ Floor Size 397m²
- ▲ Land Size 8000
- ▲ Zoning Industrial

WEB REF: CL4139

Nadeema Chothia | 083 305 5354 | nadeemac@spire.co.za

PROPERTY | WITH PURPOSE

R20,446 per month excl. VAT

R52 per m²



www.spire.co.za



CONTACT US



Nadeema Chothia

Agent

 (011) 2685871

 083 305 5354

 nadeemac@spire.co.za

WEB REF: CL4139

Nadeema Chothia | 083 305 5354 | nadeemac@spire.co.za