

PROPERTY | WITH PURPOSE

**R263,995** per month excl. VAT

R92 per m<sup>2</sup>

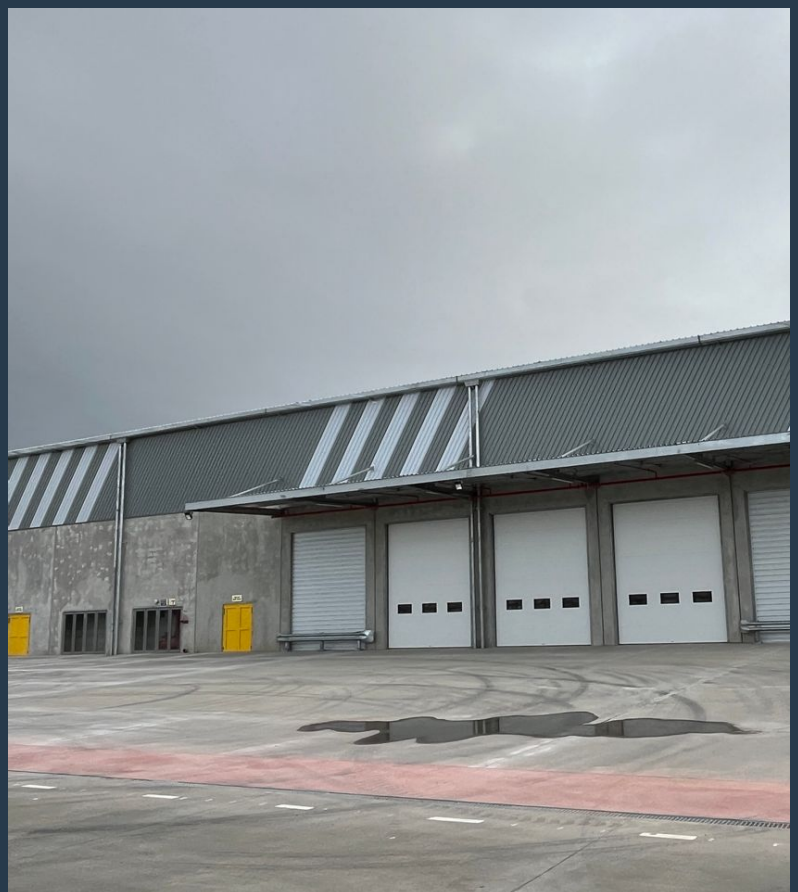


[www.spire.co.za](http://www.spire.co.za)

**TO LET**



Arterial Industrial Estate is a new industrial development well-situated along the Stellenbosch Arterial Road, offers ultra-modern, high-spec industrial units in the heart of the well-established Blackheath industrial node. The new development includes 24-hour security, access control and is conveniently located to public transport hubs. In addition, units feature an optimal office to warehouse ratio, ample yard space, fire sprinklers, a minimum eaves height of 9 m and a combination of on grade and docking height roller shutter doors. This ultra-modern, high-spec industrial estate offers an exceptional blend of functionality, security, and strategic positioning, making it an ideal choice for businesses seeking premium industrial space in a...



WEB REF: SCL2178

Logan Du Pessis | 0736449934 | [logand@spire.co.za](mailto:logand@spire.co.za)

PROPERTY | WITH PURPOSE

**R263,995** per month excl. VAT

R92 per m<sup>2</sup>



[www.spire.co.za](http://www.spire.co.za)

**WAREHOUSE TO LET IN BLACKHEATH | AERTERIAL ESTATE RANGE ROAD**



**PROPERTY DETAILS**

- ▲ Floor Size 5429m<sup>2</sup>
- ▲ Zoning Industrial

**WEB REF: SCL2178**

**Logan Du Pessis | 0736449934 | [logand@spire.co.za](mailto:logand@spire.co.za)**

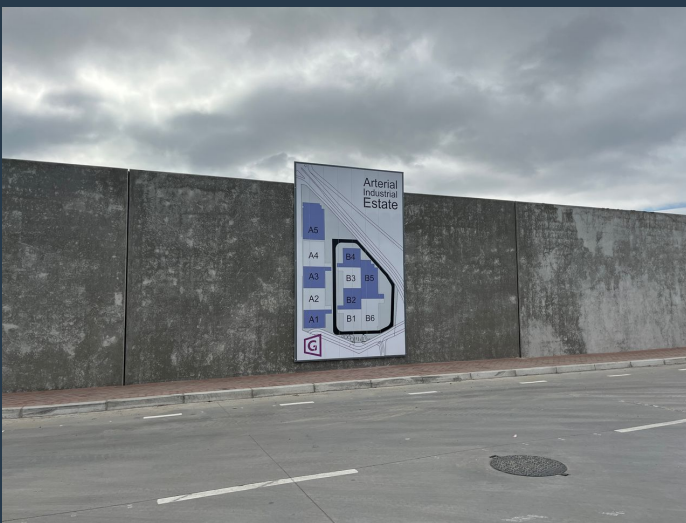
PROPERTY | WITH PURPOSE

**R263,995** per month excl. VAT

R92 per m<sup>2</sup>



[www.spire.co.za](http://www.spire.co.za)



## CONTACT US



**Logan Du Pessis**

Agent

☎ (021) 6854020

📱 0736449934

✉ [logand@spire.co.za](mailto:logand@spire.co.za)



**Kevin Hellyer**

Candidate Property Practitioner

☎ (021) 6854020

📱 061 484 5578

✉ [kevinh@spire.co.za](mailto:kevinh@spire.co.za)

WEB REF: SCL2178

Logan Du Pessis | 0736449934 | [logand@spire.co.za](mailto:logand@spire.co.za)