

PROPERTY | WITH PURPOSE

R297,755 per month excl. VAT

R85 per m²



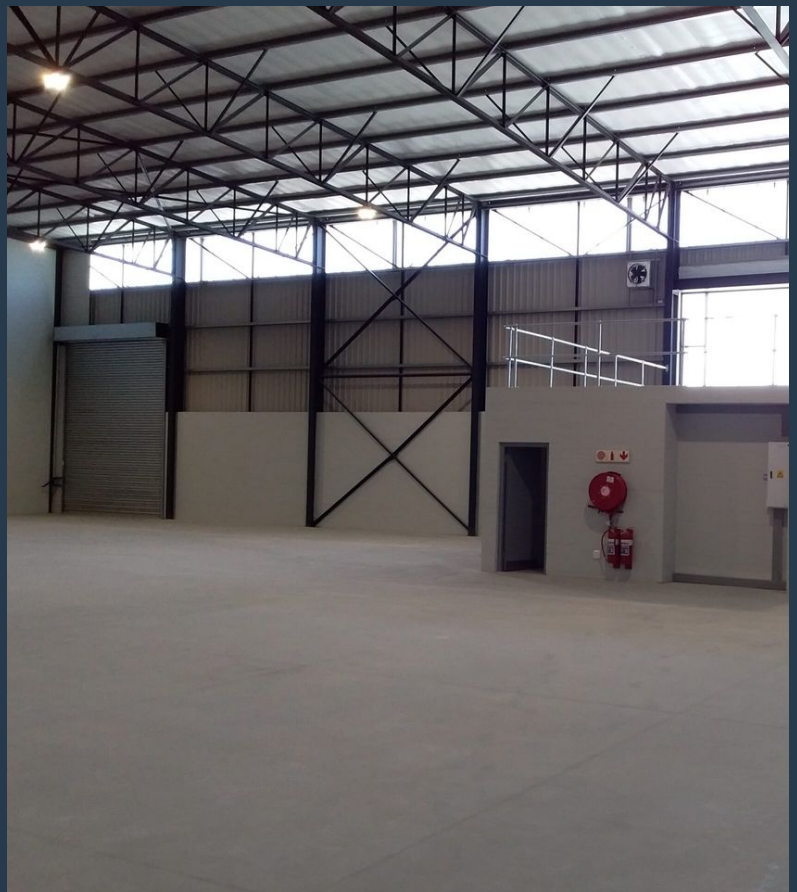
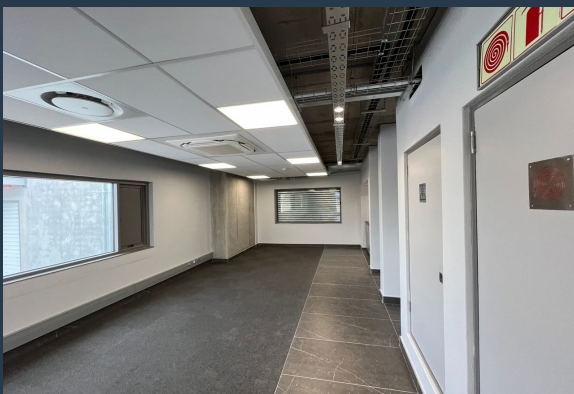
www.spire.co.za

TO LET

ARTERIAL INDUSTRIAL ESTATE

1 Range Road

3,503 m² Warehouse to rent at Arterial Industrial Estate in Blackheath. Available immediately. Arterial Industrial Estate is a new industrial development well-situated along the Stellenbosch Arterial Road, offers ultra-modern, high-spec industrial units in the heart of the well-established Blackheath industrial node. The new development includes 24-hour security, access control and is conveniently located to public transport hubs. In addition, units feature an optimal office to warehouse ratio, ample yard space, fire sprinklers, a minimum eaves height of 9m and a combination of on grade and docking height roller shutter doors. This ultra-modern, high-spec industrial estate offers an exceptional blend of functionality, security, and...



WEB REF: SCL1664

Kevin Hellyer | 061 484 5578 | kevinh@spire.co.za

PROPERTY | WITH PURPOSE

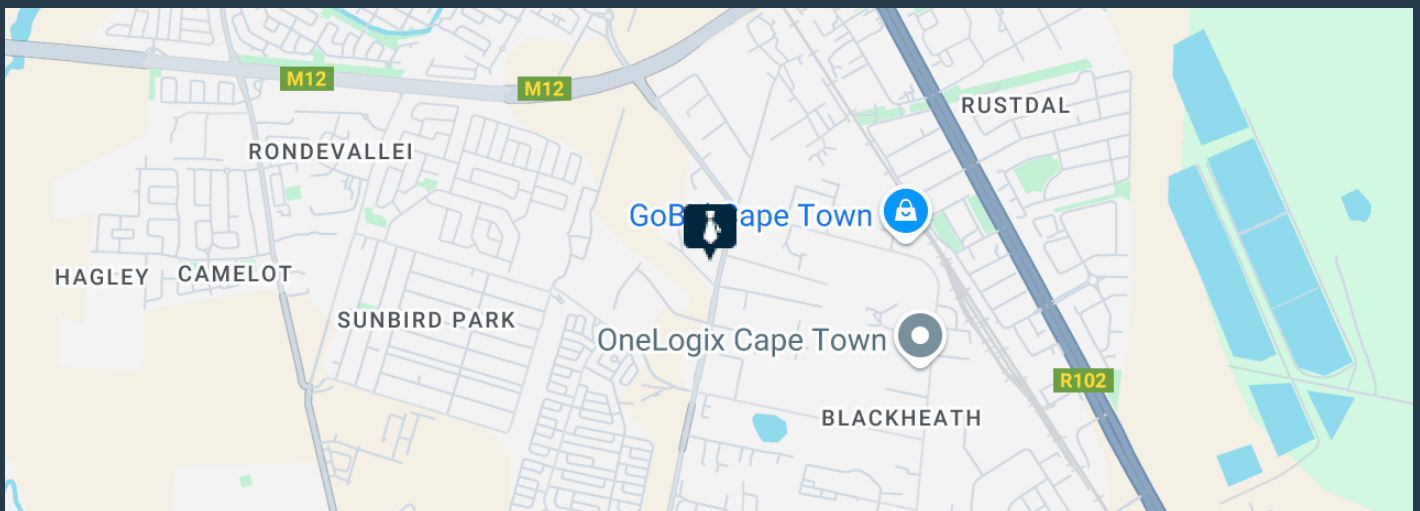
R297,755 per month excl. VAT

R85 per m²



www.spire.co.za

WAREHOUSE TO LET IN BLACKHEATH | ARTERIAL INDUSTRIAL ESTATE



PROPERTY DETAILS

- ▲ Floor Size 3503m²
- ▲ Land Size 3503
- ▲ Zoning Industrial

WEB REF: SCL1664

Kevin Hellyer | 061 484 5578 | kevinh@spire.co.za

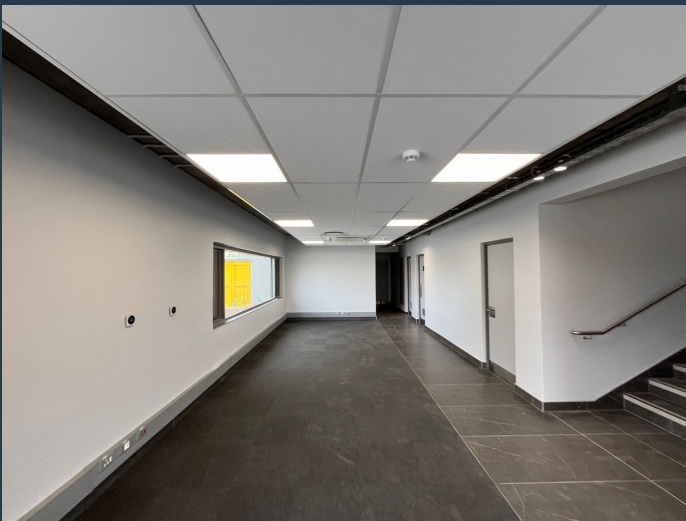
PROPERTY | WITH PURPOSE

R297,755 per month excl. VAT

R85 per m²



www.spire.co.za



CONTACT US



Kevin Hellyer

Candidate Property Practitioner

(021) 6854020

061 484 5578

kevinh@spire.co.za

WEB REF: SCL1664

Kevin Hellyer | 061 484 5578 | kevinh@spire.co.za