

PROPERTY | WITH PURPOSE

R79,550 per month excl. VAT

R215 per m²

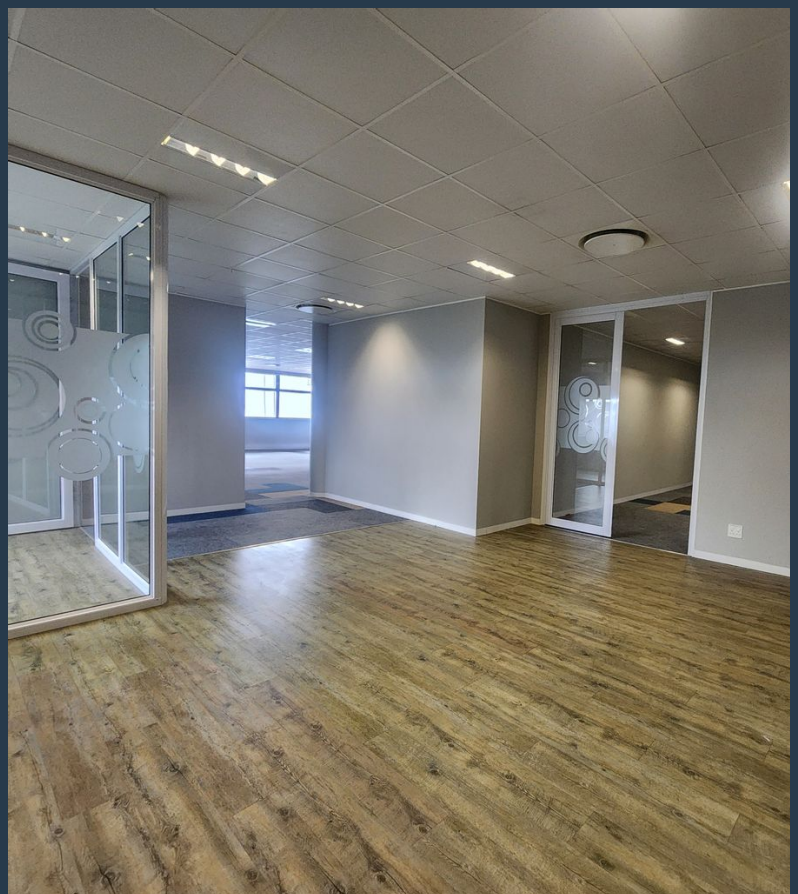
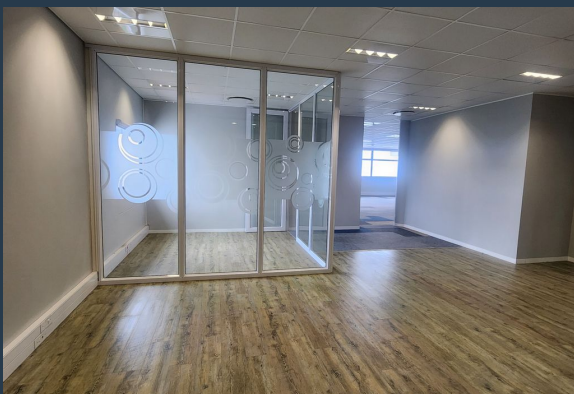


www.spire.co.za

TO LET



370 m² Office to rent in Umhlanga Ridge. Fully fitted out, A Grade office space located in a secure building. This 3rd Floor office is available for immediate occupation. Whether you're a growing business or an established enterprise, this modern office space provides everything you need to foster productivity and success. This office unit is strategically located in the Umhlanga Ridge area, providing easy access to the M4 and Upper Umhlanga, making commutes a breeze for your team. The area is a prominent mixed-use node that includes residential developments and a variety of retail and dining options, offering a vibrant work-life balance. - Spacious Reception Area: Greet your clients and guests in style with a large, welcoming reception...



WEB REF: SCL2133

Mac Khoza | +27845722858 | mack@spire.co.za

PROPERTY | WITH PURPOSE

R79,550 per month excl. VAT

R215 per m²



www.spire.co.za

370 M² OFFICE TO RENT UMHLANGA RIDGE



PROPERTY DETAILS

▲ Security	Yes	▲ Covered Parking	5.0	▲ Floor Size	370m ²
▲ Air Conditioning	Yes			▲ Land Size	370
				▲ Zoning	Commercial

WEB REF: SCL2133

Mac Khoza | +27845722858 | mack@spire.co.za

PROPERTY | WITH PURPOSE

R79,550 per month excl. VAT

R215 per m²



www.spire.co.za



CONTACT US



Mac Khoza

Agent

(031) 5368243

+27845722858

mack@spire.co.za

WEB REF: SCL2133

Mac Khoza | +27845722858 | mack@spire.co.za