

PROPERTY | WITH PURPOSE

**R91,375** per month excl. VAT

R125 per m<sup>2</sup>



[www.spire.co.za](http://www.spire.co.za)

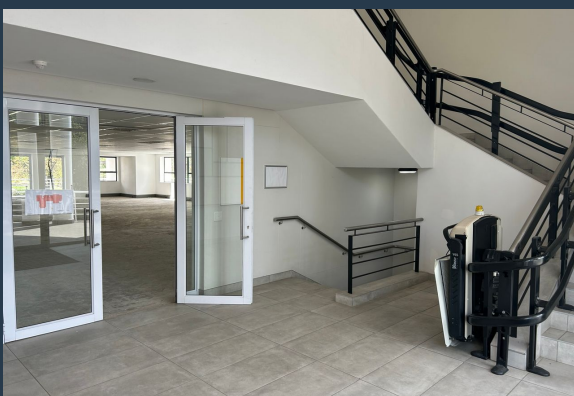
**TO LET**



## WOODMEAD ESTATE

1 Woodmead Drive

731m<sup>2</sup> of A-Grade Offices To Let on the ground floor of Building 5 in Woodmead Estate. The vacant space has been white-boxed in preparation for a new tenant to fit-out. Woodmead Estate is an A grade office park set amongst established landscaped gardens. The office park is situated within close proximity to the Johannesburg Country Club and numerous shops and retailers in Woodmead. The clients in the park comprise of mainly blue chip, multi-nationals. There is easy access to all major arterial road links, namely the M1, N1 and N3. The park offers 24 hour security, access control & back-up water, as well as landscaped break-away gardens. Spire have a team of Commercial Property Specialists who have the resources and experience to...



WEB REF: SCL1245

Nadeema Chothia | 083 305 5354 | [nadeemac@spire.co.za](mailto:nadeemac@spire.co.za)

PROPERTY | WITH PURPOSE

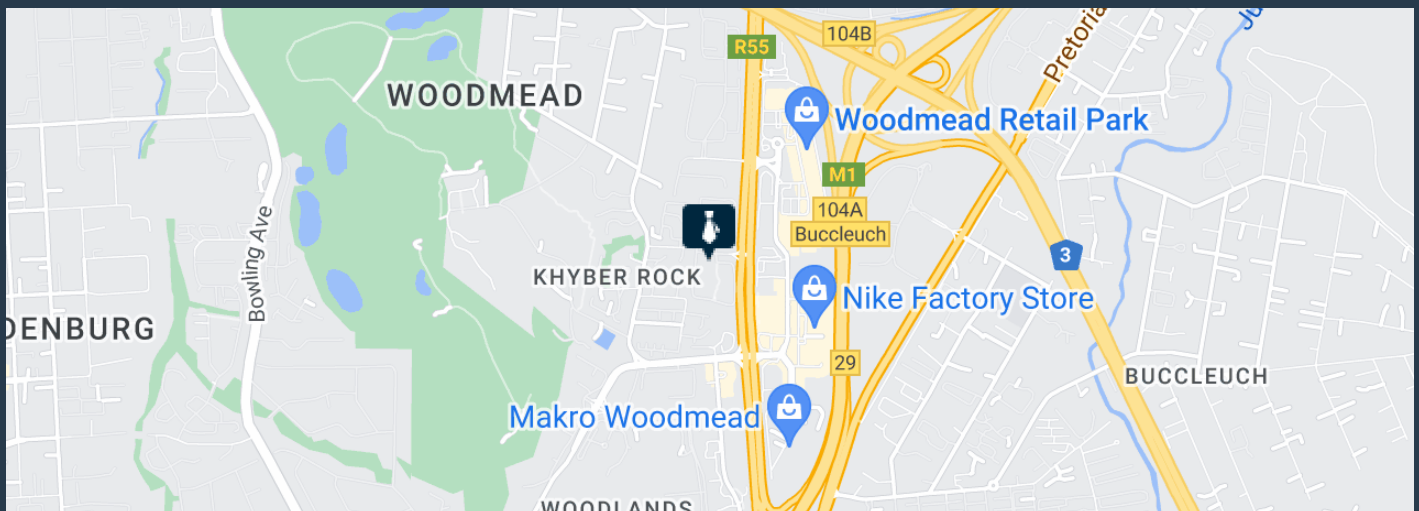
**R91,375** per month excl. VAT

R125 per m<sup>2</sup>



[www.spire.co.za](http://www.spire.co.za)

## 731M<sup>2</sup> OFFICES TO LET IN WOODMEAD



### PROPERTY DETAILS

- ▲ Floor Size 731m<sup>2</sup>
- ▲ Zoning Commercial

WEB REF: SCL1245

Nadeema Chothia | 083 305 5354 | [nadeemac@spire.co.za](mailto:nadeemac@spire.co.za)

PROPERTY | WITH PURPOSE

**R91,375** per month excl. VAT

R125 per m<sup>2</sup>



[www.spire.co.za](http://www.spire.co.za)



## CONTACT US



**Nadeema Chothia**

Agent

 (011) 2685871

 083 305 5354

 [nadeemac@spire.co.za](mailto:nadeemac@spire.co.za)

WEB REF: SCL1245

Nadeema Chothia | 083 305 5354 | [nadeemac@spire.co.za](mailto:nadeemac@spire.co.za)