

PROPERTY | WITH PURPOSE

R212,100 per month excl. VAT

R150 per m²

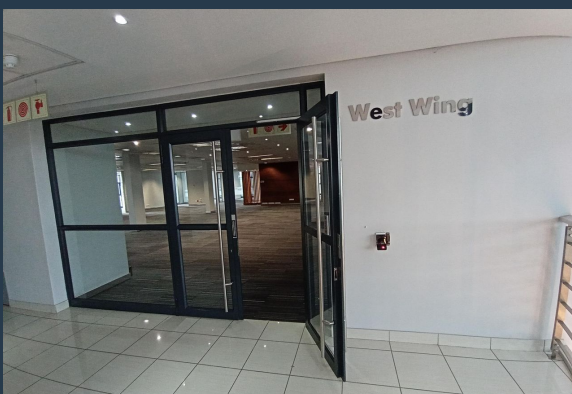
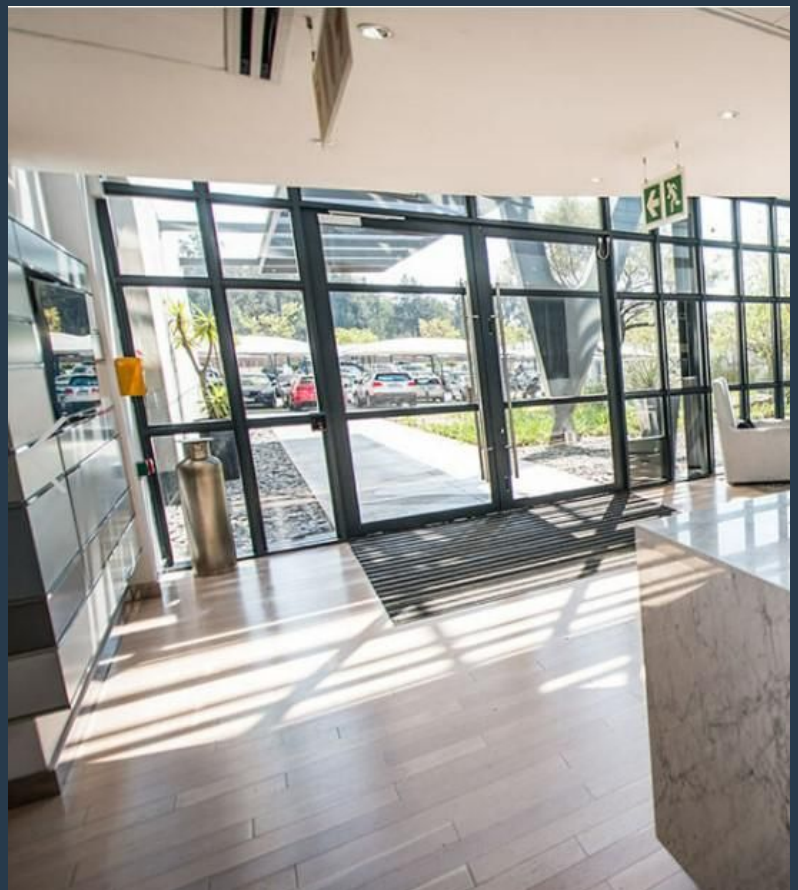


www.spire.co.za

TO LET



P-grade Energy Efficient office building situated within secure and landscaped Woodmead North Office Park. High degree of visibility with frontage to the M1/N1 Buccleuch Interchange. - Double volume reception. - Two wings of a floor with a lobby separating east and west wings. - Separate toilet facilities for each floor. - A grade office finishes with lots of light and glass walling separating perimeter offices or meeting rooms. - Beautiful modern Coffee stations in each wing of the floor. If your company is looking for impressive offices where there is easy access on and off highways, high visibility and A+ grade offices with excellent open plan and office mix this building is a must see.



WEB REF: CL2920

Nadeema Chothia | 083 305 5354 | nadeemac@spire.co.za

PROPERTY | WITH PURPOSE

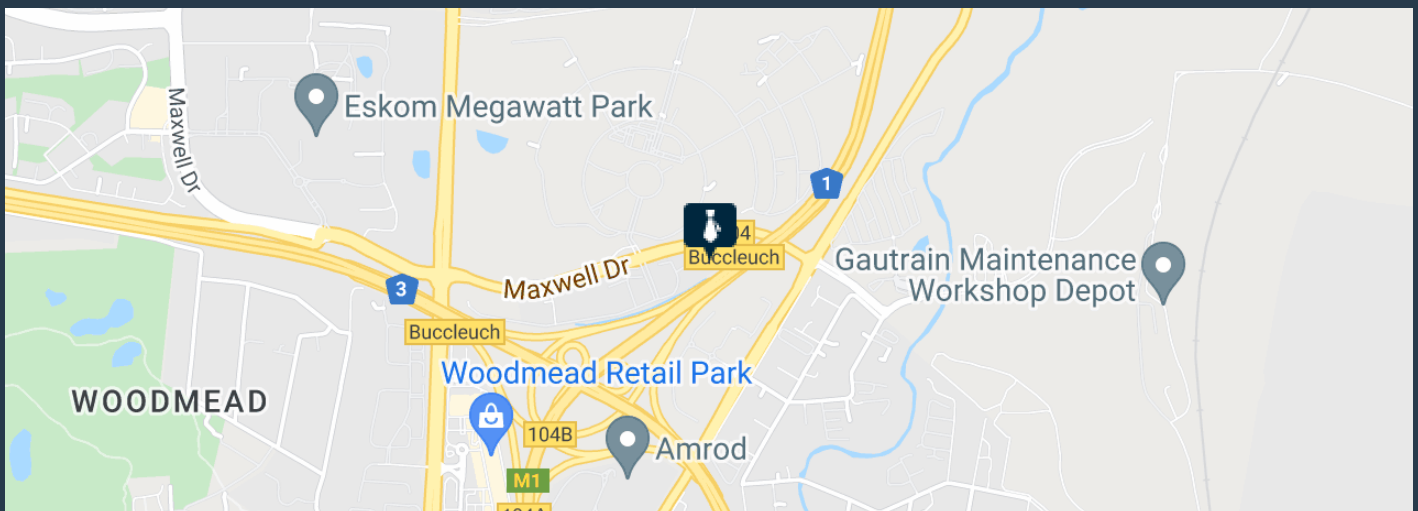
R212,100 per month excl. VAT

R150 per m²



www.spire.co.za

1414M2 ENERGY EFFICIENT A+ GRADE OFFICES



PROPERTY DETAILS

▲ Open Parking	6.0	▲ Floor Size	1414m ²
▲ Covered Parking	50.0	▲ Zoning	Commercial
▲ Basement Parking	20.0		

WEB REF: CL2920

Nadeema Chothia | 083 305 5354 | nadeemac@spire.co.za

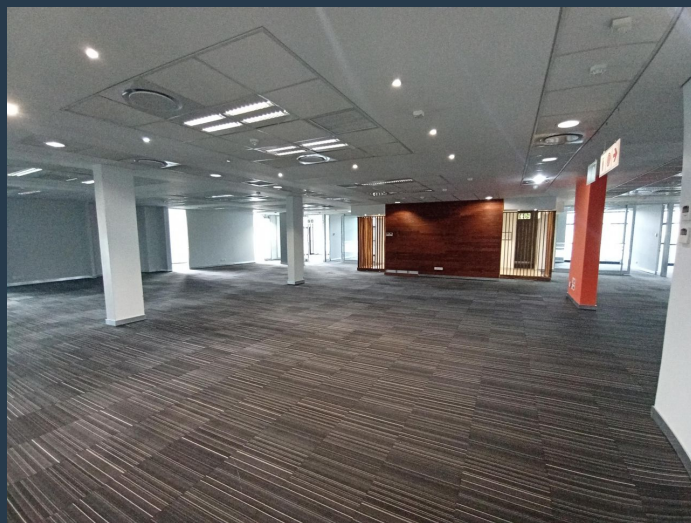
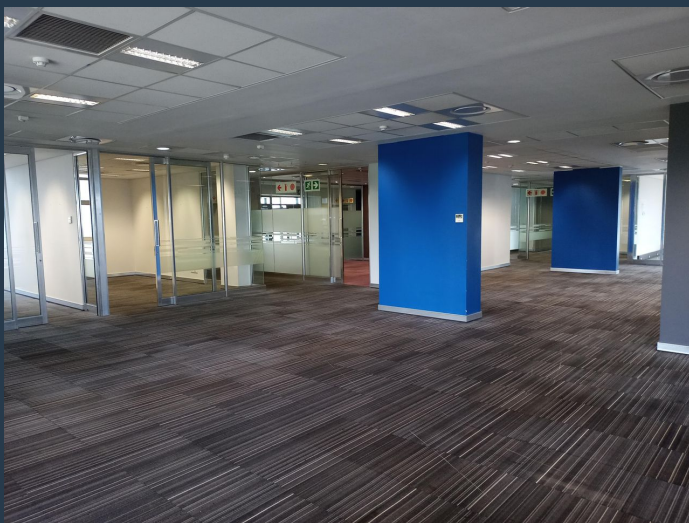
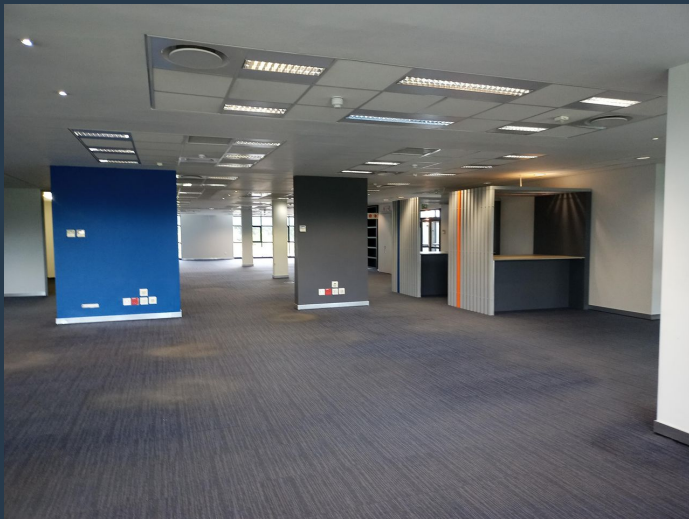
PROPERTY | WITH PURPOSE

R212,100 per month excl. VAT

R150 per m²



www.spire.co.za



CONTACT US



Nadeema Chothia

Agent

☎ (011) 2685871

📱 083 305 5354

✉ nadeemac@spire.co.za

WEB REF: CL2920

Nadeema Chothia | 083 305 5354 | nadeemac@spire.co.za