

PROPERTY | WITH PURPOSE

**R141,680** per month excl. VAT

R160 per m<sup>2</sup>

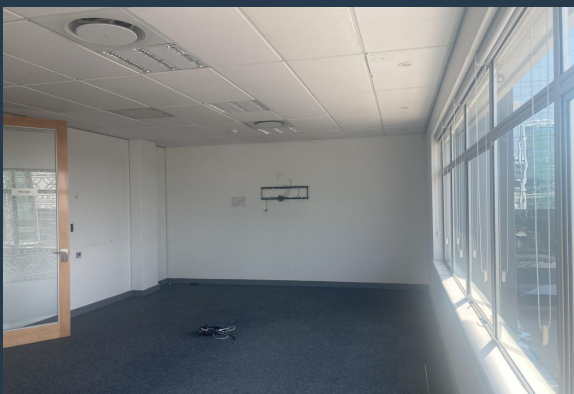


[www.spire.co.za](http://www.spire.co.za)

**TO LET**



885 sqm office to rent in Sandown Sandton, Sandton. on 138 west street Sandton. This white boxed office includes Kitchenette, an Air-condition and shared bathrooms in each floor. the property has a full electricity and water backup systems for uninterrupted working hours. There is lift access to all the buildings, these offices are Ideal for financial service providers, legal eagles, and call centres. The offices are easily sub-divided in smaller, tailor-made opportunities too. The property is near the Gautrain station and within walking distance of the retail, Sandton City and Nelson Mandela square. This is an opportunity to be in the heart of Sandton, near all sorts of fantastic amenities like convenience shopping, restaurants,...



WEB REF: CL3700

Nadeema Chothia | 083 305 5354 | [nadeemac@spire.co.za](mailto:nadeemac@spire.co.za)

PROPERTY | WITH PURPOSE

**R141,680** per month excl. VAT

R160 per m<sup>2</sup>



[www.spire.co.za](http://www.spire.co.za)

## 885 SQM OFFICES TO RENT IN SANDTON | SANDOWN SANDTON, SANDTON



### PROPERTY DETAILS

- ▲ Floor Size 885m<sup>2</sup>
- ▲ Zoning Commercial

WEB REF: CL3700

Nadeema Chothia | 083 305 5354 | [nadeemac@spire.co.za](mailto:nadeemac@spire.co.za)



PROPERTY | WITH PURPOSE

**R141,680** per month excl. VAT

R160 per m<sup>2</sup>



[www.spire.co.za](http://www.spire.co.za)



## CONTACT US



**Nadeema Chothia**

Agent

 (011) 2685871

 083 305 5354

 [nadeemac@spire.co.za](mailto:nadeemac@spire.co.za)

WEB REF: CL3700

Nadeema Chothia | 083 305 5354 | [nadeemac@spire.co.za](mailto:nadeemac@spire.co.za)