

PROPERTY | WITH PURPOSE

R34,470 per month excl. VAT

R90 per m²



www.spire.co.za

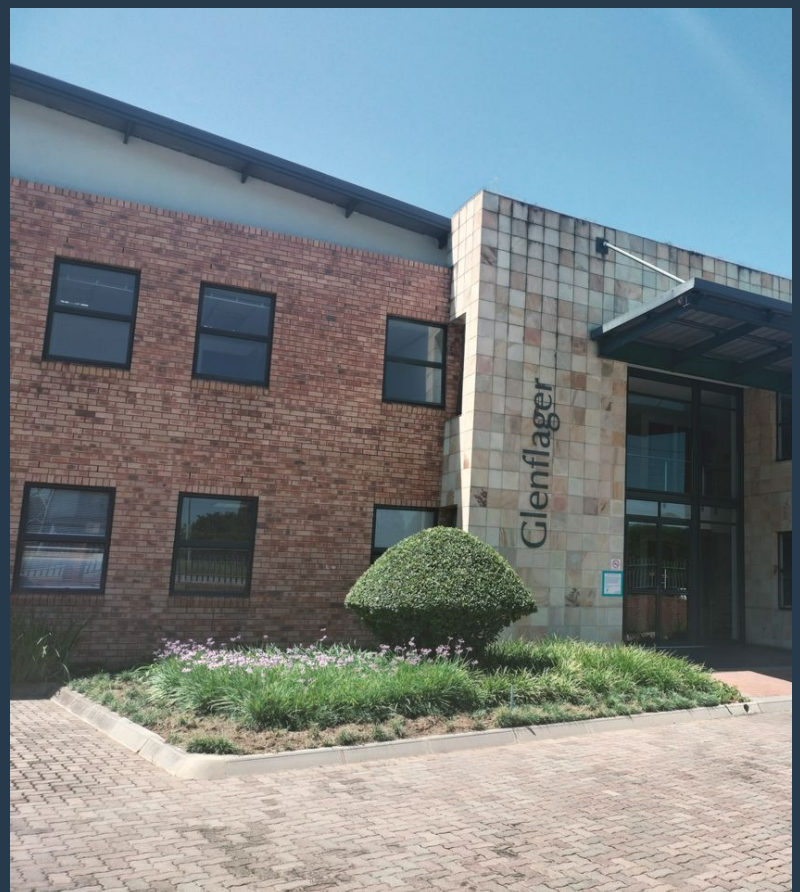
TO LET



KILDRUMMY

2 Umhlanga Ave

The 383m² office has two beautiful boardrooms and office and kitchen - and a large open plan office space. First floor of a modern smart building, allowing the natural daylight in from all sides. The Park has full stand by generators and water back up facilities. Paulshof Sandton, is easily accessed along Witkoppen road from two major highway turn offs. William Nicol and Rivonia roads, with connecting main roads to Kyalami, and Bryanston. Spire Property Brokers offer a premium property portfolio that showcases the very best Commercial Space available on offer. Get in touch today, and let us find you the right space to rent in Rivonia, Paulshof and Sandton.



WEB REF: SCL175

Nadeema Chothia | 083 305 5354 | nadeemac@spire.co.za

PROPERTY | WITH PURPOSE

R34,470 per month excl. VAT

R90 per m²



www.spire.co.za

TO LET OFFICE IN PAULSHOF SANDTON



PROPERTY DETAILS

- ▲ Floor Size 383m²
- ▲ Zoning Commercial

WEB REF: SCL175

Nadeema Chothia | 083 305 5354 | nadeemac@spire.co.za

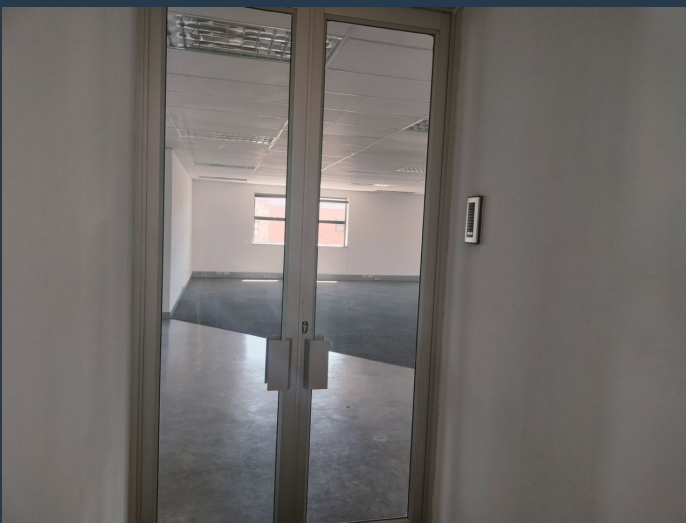
PROPERTY | WITH PURPOSE

R34,470 per month excl. VAT

R90 per m²



www.spire.co.za



CONTACT US



Nadeema Chothia

Agent

 (011) 2685871

 083 305 5354

 nadeemac@spire.co.za

WEB REF: SCL175

Nadeema Chothia | 083 305 5354 | nadeemac@spire.co.za