

PROPERTY | WITH PURPOSE

R34,834 per month excl. VAT

R125 per m²



www.spire.co.za

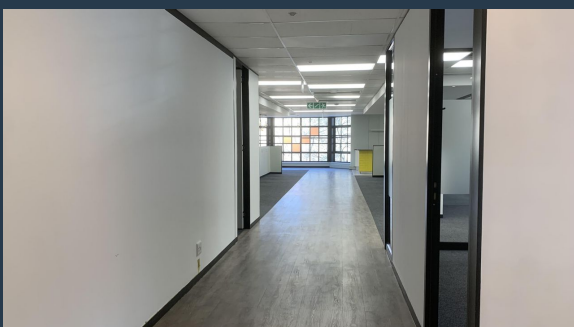
TO LET



PETER PLACE OFFICE PARK

54 Peter Place, Peter Place Office Park

278.67m² of office space to let in Bryanston, Sandton. Peter Place Office Park is an A grade office park in the heart of Bryanston and is situated within close proximity to Randburg and Sandton. The clients in the park comprise of blue chip, multi-national and professional firms. There is also easy access to all major road links namely William Nicol Drive, Republic Road and Jan Smuts Avenue. The offices enjoy picturesque gardens and tranquil surrounds. This stunning office offers you everything you need to get your business going from the start. It comes fully fitted with multiple offices, boardrooms, a wet kitchen and plenty of open space. The office is close to all sorts of locations such as St Stithians high school and primary...



WEB REF: CL4041

Torsten Hein | +27 81 380 5696 | torstenh@spire.co.za

PROPERTY | WITH PURPOSE

R34,834 per month excl. VAT

R125 per m²



www.spire.co.za

FITTED VACANT OFFICE TO LET IN BRYANSTON - PETER PLACE OFFICE PARK



PROPERTY DETAILS

▲ Security	Yes	▲ Floor Size	279m ²
▲ Air Conditioning	Yes	▲ Zoning	Commercial

WEB REF: CL4041

Torsten Hein | +27 81 380 5696 | torstenh@spire.co.za

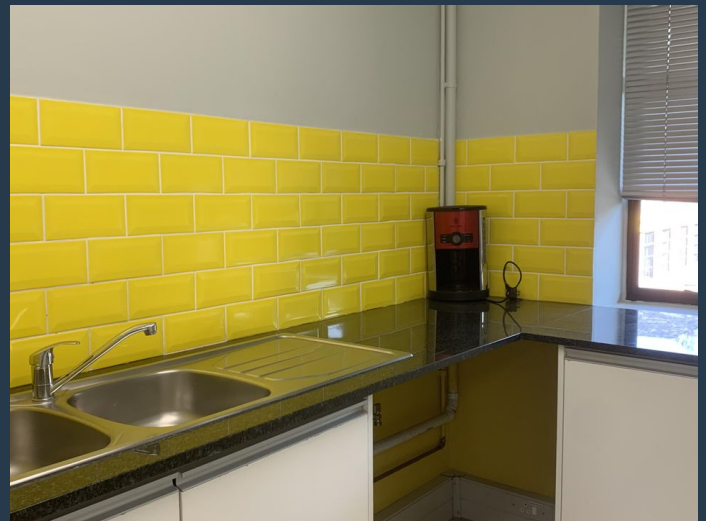
PROPERTY | WITH PURPOSE

R34,834 per month excl. VAT

R125 per m²



www.spire.co.za



CONTACT US



Torsten Hein

Agent

(011) 2685871

+27 81 380 5696

torstenh@spire.co.za

WEB REF: CL4041

Torsten Hein | +27 81 380 5696 | torstenh@spire.co.za