

PROPERTY | WITH PURPOSE

**R50,965** per month excl. VAT

R180 per m<sup>2</sup>



[www.spire.co.za](http://www.spire.co.za)

**TO LET**



283.14 sqm Retail space available immediately to rent. The Building sits next to well known vehicle dealerships and fitment centres. The building offers workshops space, office spaces and a showroom inclusive of a entertainment area. The Retail space is situated opposite the Clearwater Mall with walking distance from the mall. The space is very visible and has good marketing opportunities and exposure from Christiaan de Wet Road is easy accessed by Hendrik Potgieter road The Building can be subdivided as Follows: Ground Floor Terraces - 59.74 sqm @ R 10 753 Yard - 351.34 sqm @ R63 241 Workshop/Stores - 121.85 sqm @ R21 933 Ground Floor(ReG1) - 394.28 sqm @ R70 970 Our team of property professionals are ready to find your...



WEB REF: CL2196

Nadeema Chothia | 083 305 5354 | [nadeemac@spire.co.za](mailto:nadeemac@spire.co.za)

PROPERTY | WITH PURPOSE

**R50,965** per month excl. VAT

R180 per m<sup>2</sup>



[www.spire.co.za](http://www.spire.co.za)

**RETAIL SPACE TO RENT IN CONSTANTIA KLOOF | EX HARLEY DAVIDSON**



**PROPERTY DETAILS**

- ▲ Security Yes
- ▲ Floor Size 283m<sup>2</sup>
- ▲ Zoning Commercial

WEB REF: CL2196

Nadeema Chothia | 083 305 5354 | [nadeemac@spire.co.za](mailto:nadeemac@spire.co.za)

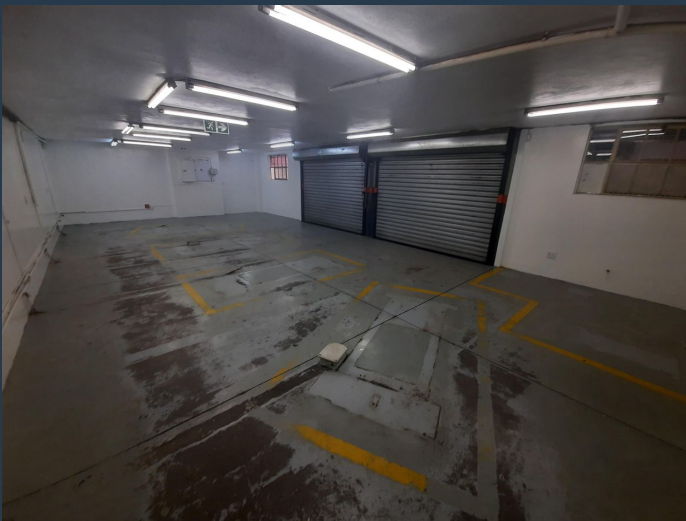
PROPERTY | WITH PURPOSE

**R50,965** per month excl. VAT

R180 per m<sup>2</sup>



[www.spire.co.za](http://www.spire.co.za)



## CONTACT US



**Nadeema Chothia**

Agent

☎ (011) 2685871

📱 083 305 5354

✉ [nadeemac@spire.co.za](mailto:nadeemac@spire.co.za)



**Kate Shimwell**

Agent

☎ (011) 2685871

📱 082 493 0273

✉ [kates@spire.co.za](mailto:kates@spire.co.za)

WEB REF: CL2196

Nadeema Chothia | 083 305 5354 | [nadeemac@spire.co.za](mailto:nadeemac@spire.co.za)