

PROPERTY | WITH PURPOSE

R173,660 per month excl. VAT

R190 per m²

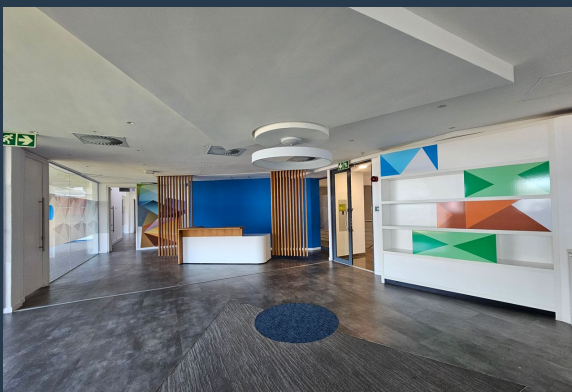


www.spire.co.za

TO LET



914 m² Office to rent in Platteklouf. A Grade office space to let at Tygerberg Office Park in the picturesque suburb of Platteklouf. This first-floor office offers a professionally fitted-out space that combines functionality, aesthetics, and an unbeatable location. Situated within a secure and tranquil business park, this property is designed to meet the needs of modern businesses seeking a productive and inspiring work environment. Move into a well-designed office with a professional layout that includes a reception area, partitioned offices, and collaborative workspaces, eliminating the hassle of initial setup. The standout feature of this office is the expansive balcony that overlooks the lush Tygerberg Nature Reserve. This serene...



WEB REF: CL393

Chantel Georgiadis | 0845251014 | chantelg@spire.co.za

PROPERTY | WITH PURPOSE

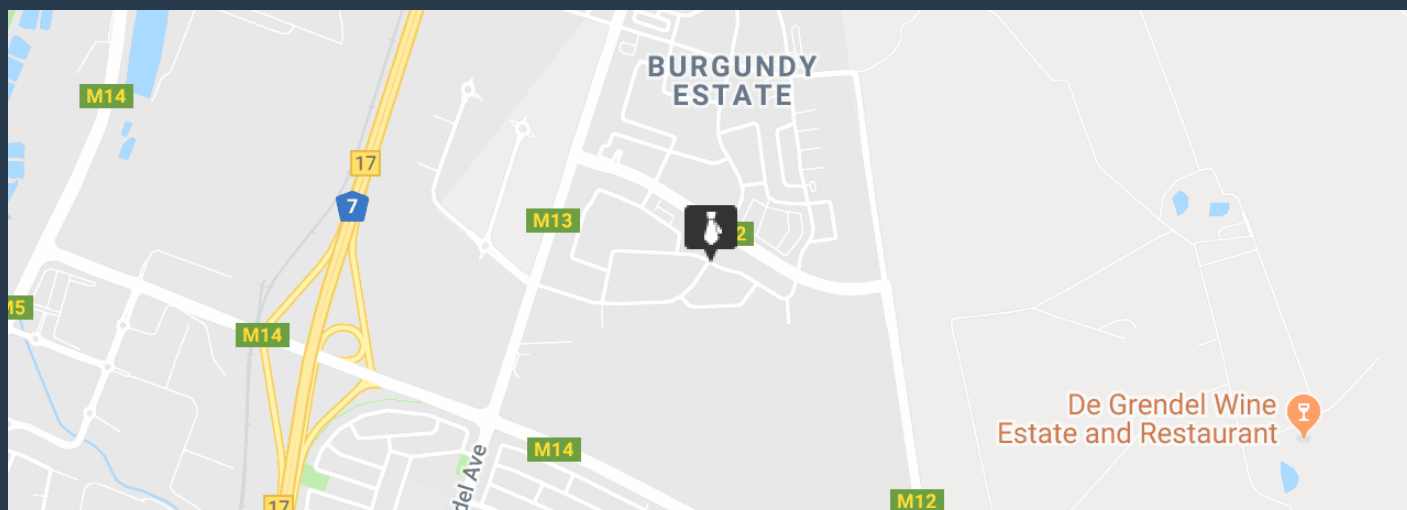
R173,660 per month excl. VAT

R190 per m²



www.spire.co.za

914 M² OFFICE TO RENT PLATTEKLOOF | TYGERBERG OFFICE PARK



PROPERTY DETAILS

▲ Security	Yes	▲ Basement Parking	36.0	▲ Floor Size	914m ²
▲ Air Conditioning	Yes			▲ Land Size	914
				▲ Zoning	Commercial

WEB REF: CL393

Chantel Georgiadis | 0845251014 | chantelg@spire.co.za

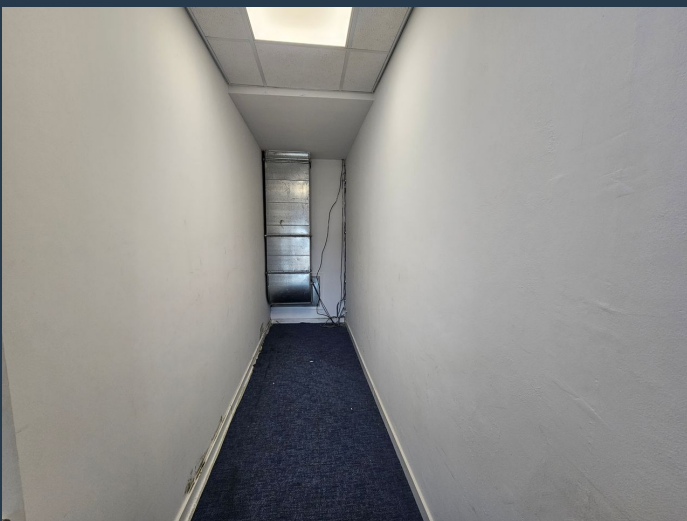
PROPERTY | WITH PURPOSE

R173,660 per month excl. VAT

R190 per m²



www.spire.co.za



CONTACT US



Chantel Georgiadis

Non-Principal Property Practitioner

☎ (021) 6854020

📱 0845251014

✉ chantelg@spire.co.za



Kevin Hellyer

Candidate Property Practitioner

☎ (021) 6854020

📱 061 484 5578

✉ kevinh@spire.co.za

WEB REF: CL393

Chantel Georgiadis | 0845251014 | chantelg@spire.co.za