

PROPERTY | WITH PURPOSE

R163,680 per month excl. VAT

R160 per m²

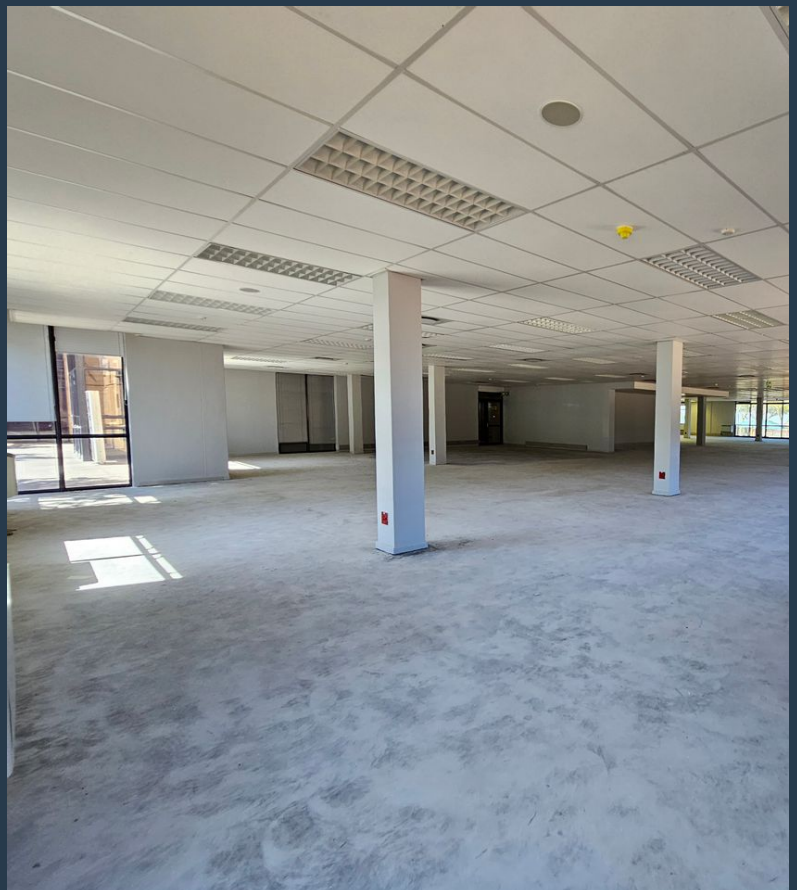


www.spire.co.za

TO LET



1,023 m² Office Space to let in Platteklouf. Modern A Grade building with large open plan floor plate located on the ground floor in the building. This office has large expansive windows with views over Table Mountain. The office is white-boxed and is ready for a full installation, with a generous allowance provided. The building has lift access to all floors as well as ample covered and open parking bays. The park is located close to the N1 highway. The office is a blank canvas, ideal for businesses looking to design an environment that reflects their unique operational and cultural requirements. Allowance provided to fit-out the space. Platteklouf Office Park is a gated business park with 24-hour security, full access control, and a...



WEB REF: CL2221

Chantel Georgiadis | 0845251014 | chantelg@spire.co.za

PROPERTY | WITH PURPOSE

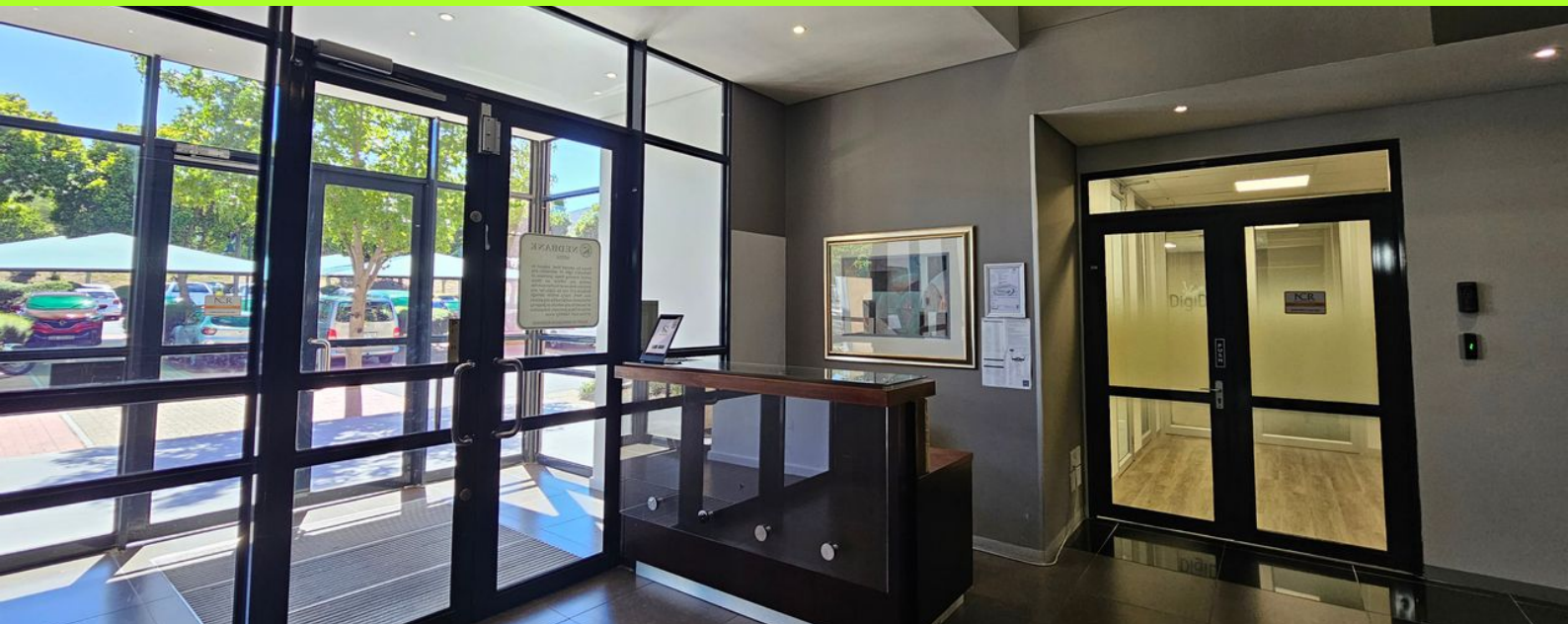
R163,680 per month excl. VAT

R160 per m²



www.spire.co.za

1,023 M² OFFICE TO RENT PLATTEKLOOF OFFICE PARK



PROPERTY DETAILS

▲ Security	Yes	▲ Floor Size	1023m ²
▲ Air Conditioning	Yes	▲ Land Size	1023
		▲ Zoning	Commercial

WEB REF: CL2221

Chantel Georgiadis | 0845251014 | chantelg@spire.co.za

PROPERTY | WITH PURPOSE

R163,680 per month excl. VAT

R160 per m²



www.spire.co.za



CONTACT US



Chantel Georgiadis

Non-Principal Property Practitioner

☎ (021) 6854020

📱 0845251014

✉ chantelg@spire.co.za



Kevin Hellyer

Candidate Property Practitioner

☎ (021) 6854020

📱 061 484 5578

✉ kevinh@spire.co.za

WEB REF: CL2221

Chantel Georgiadis | 0845251014 | chantelg@spire.co.za