

PROPERTY | WITH PURPOSE

R9,000 per month excl. VAT

R90 per m²



www.spire.co.za

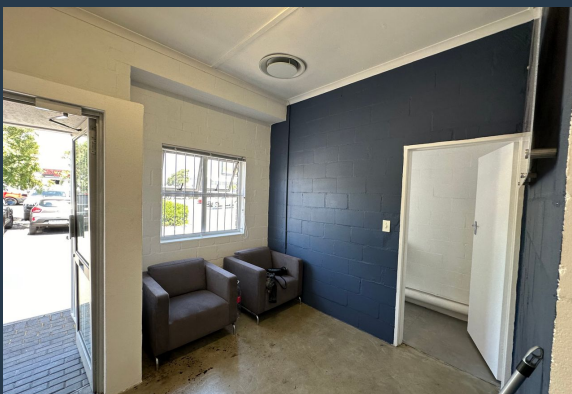
TO LET



MILNERTON BUSINESS PARK

2 Racecourse Road

100m² office to rent in Milnerton, Milnerton Business Park is an industrial complex offering numerous small and medium-sized warehouses and offices space for rent in Milnerton, Montague Gardens. The space consists of 3 offices, an open plan area, a kitchen and ablution facilities as well as back up power! The benefits of this location include on-site parking bays, security doors for entry into all units, 3-phase power, and 24-hour security personnel for added convenience and peace of mind. The commercial site is conveniently located near all necessary services and public transportation, with easy access from Racecourse Road, the business park is close to key transportation lines, making it an excellent alternative for enterprises...



WEB REF: SCL1619

Amy Steyn | 061 1257879 | amys@spire.co.za

PROPERTY | WITH PURPOSE

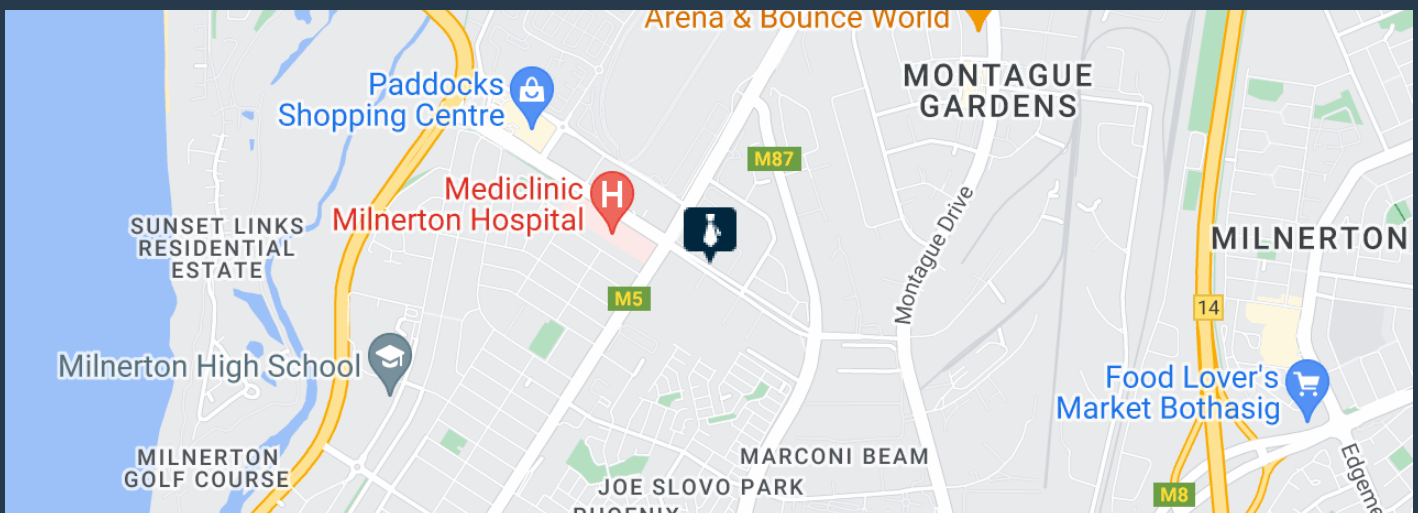
R9,000 per month excl. VAT

R90 per m²



www.spire.co.za

OFFICE TO RENT IN CAPE TOWN, MILNERTON



PROPERTY DETAILS

▲ Floor Size	100m ²
▲ Land Size	100
▲ Zoning	Commercial

WEB REF: SCL1619

Amy Steyn | 061 1257879 | amys@spire.co.za

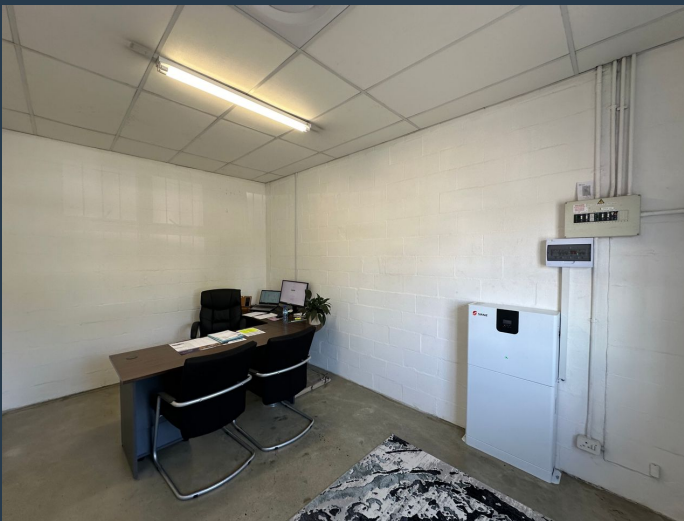
PROPERTY | WITH PURPOSE

R9,000 per month excl. VAT

R90 per m²



www.spire.co.za




CONTACT US



Amy Steyn

Agent

 (021) 6854020

 061 1257879

 amys@spire.co.za

WEB REF: SCL1619

Amy Steyn | 061 1257879 | amys@spire.co.za