

PROPERTY | WITH PURPOSE

R41,875 per month excl. VAT

R125 per m²



www.spire.co.za

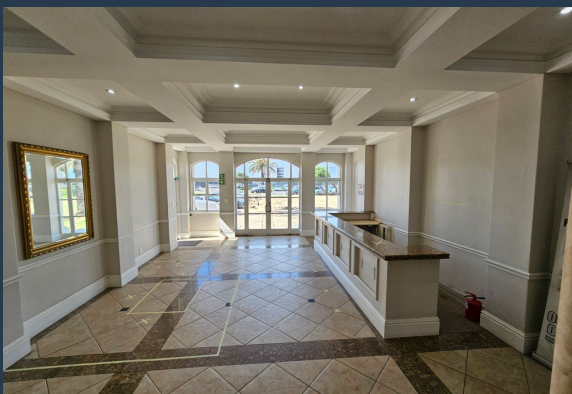
TO LET



CENTURY GATE

1 Bosmansdam Road

335 m² Office to rent in Century City. Fitted out offices ready for a new tenant to take occupation. This modern office space combines convenience, functionality, and a beautiful setting, making it a perfect choice for your businesses. The space includes a welcoming reception area that creates a professional first impression for clients and visitors, ensuring a warm and organized entry point for your business. It also has two spacious open-plan areas provide a versatile workspace suitable for collaborative work, team meetings, or creative brainstorming sessions. A well-equipped kitchenette ensures that staff have a convenient place to prepare meals and refreshments, contributing to a comfortable working environment. Century Gate offers...



WEB REF: SCL1670

Chantel Georgiadis | 0845251014 | chantelg@spire.co.za

PROPERTY | WITH PURPOSE

R41,875 per month excl. VAT

R125 per m²



www.spire.co.za

335 M² OFFICE TO RENT IN CENTURY CITY



PROPERTY DETAILS

▲ Security	Yes	▲ Open Parking	5.0	▲ Floor Size	335m ²
▲ Air Conditioning	Yes			▲ Land Size	335
				▲ Zoning	Commercial

WEB REF: SCL1670

Chantel Georgiadis | 0845251014 | chantelg@spire.co.za

PROPERTY | WITH PURPOSE

R41,875 per month excl. VAT

R125 per m²



www.spire.co.za



CONTACT US



Chantel Georgiadis
Non-Principal Property Practitioner

☎ (021) 6854020
📱 0845251014
✉ chantelg@spire.co.za



Kevin Hellyer
Candidate Property Practitioner

☎ (021) 6854020
📱 061 484 5578
✉ kevinh@spire.co.za

WEB REF: SCL1670

Chantel Georgiadis | 0845251014 | chantelg@spire.co.za