

PROPERTY | WITH PURPOSE

R102,150 per month excl. VAT

R225 per m²

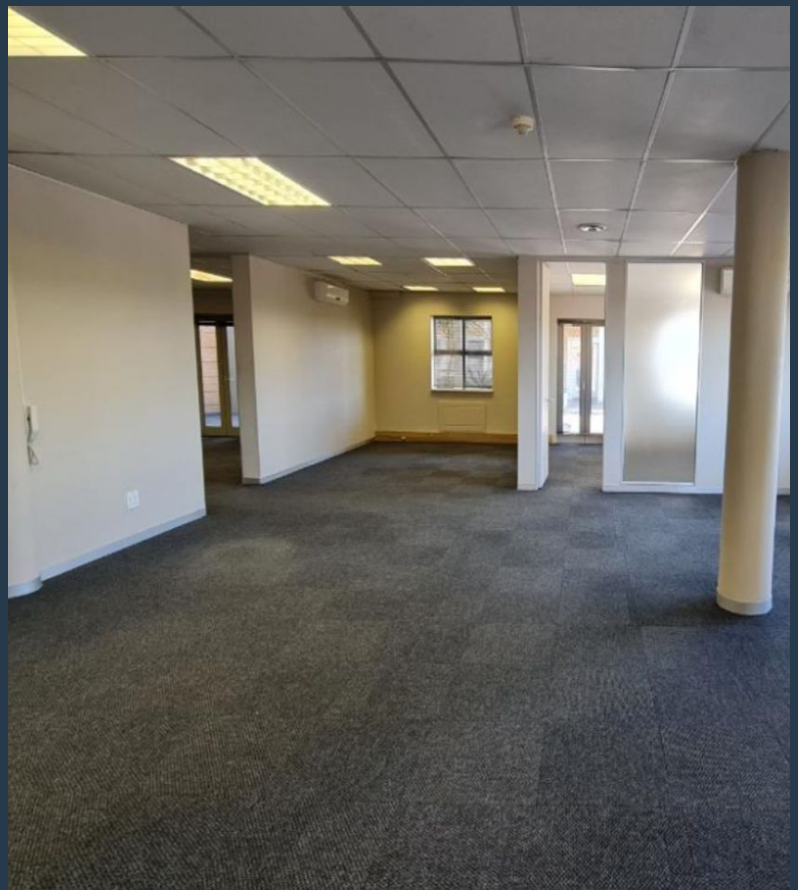


www.spire.co.za

TO LET



454 m² Office space to rent in Century City. Back up power available in the building. Fully fitted out space located on the ground floor at Waterford Place. Neat office with a reception area, meeting room and open plan work space. The office has a full kitchen as well as access to an exclusive use balcony and patio. This building is located in a secure office park on Century Boulevard. Great location with access to secure basement as well as open parking bays from R850.00 per bay. The Building has a full back up generator on-site for all tenants. Century City has emerged as one of the leading developing hubs for business, lifestyle and entertainment purposes in Cape Town. This booming business hub and community is surrounded by beautiful...



WEB REF: SCL49

Chantel Georgiadis | 0845251014 | chantelg@spire.co.za

PROPERTY | WITH PURPOSE

R102,150 per month excl. VAT

R225 per m²



www.spire.co.za

OFFICE SPACE TO RENT CENTURY CITY | WATERFORD HOUSE



PROPERTY DETAILS

▲ Basement Parking	12.0	▲ Floor Size	454m ²
		▲ Land Size	454
		▲ Zoning	Commercial

WEB REF: SCL49

Chantel Georgiadis | 0845251014 | chantelg@spire.co.za

PROPERTY | WITH PURPOSE

R102,150 per month excl. VAT

R225 per m²



www.spire.co.za



CONTACT US



Chantel Georgiadis
Non-Principal Property Practitioner

☎ (021) 6854020
📱 0845251014
✉ chantelg@spire.co.za



Kevin Hellyer
Candidate Property Practitioner

☎ (021) 6854020
📱 061 484 5578
✉ kevinh@spire.co.za

WEB REF: SCL49

Chantel Georgiadis | 0845251014 | chantelg@spire.co.za