

PROPERTY | WITH PURPOSE

R15,576 per month excl. VAT

R141 per m<sup>2</sup>

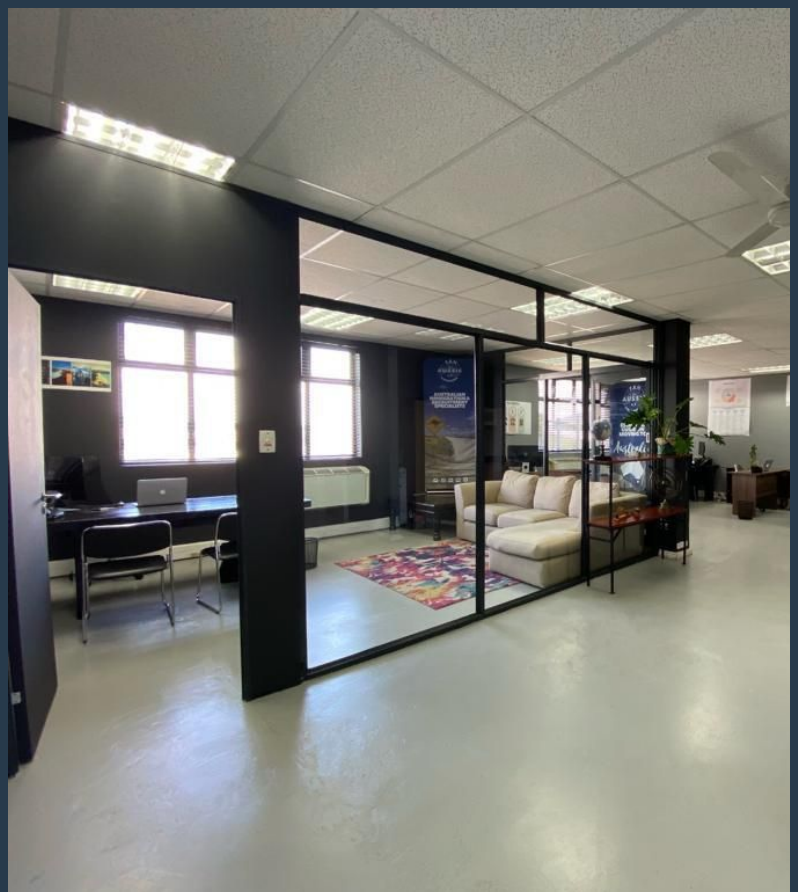


[www.spire.co.za](http://www.spire.co.za)

TO LET



110 Sqm Office to rent at Millennium Business Park in Century City. Neat fitted out offices located on the 1st floor in a secure business park. The space includes bathrooms, full kitchen and glass partitioned meeting room. Modern finishes with ample light. Very neat office that is ready to move in. The park has Fibre for high speed internet services as well as easy access to public transport services in the area. Century City is situated between the Northern Suburbs and Southern Suburbs of Cape Town, making it one of the most centrally located business areas. Century City is a mixed-use area consisting of secure business parks and low-rise office buildings. The area has a large residential component as well as several retail centers....



WEB REF: CL4103

Chantel Georgiadis | 0845251014 | [chantelg@spire.co.za](mailto:chantelg@spire.co.za)

PROPERTY | WITH PURPOSE

**R15,576** per month excl. VAT

R141 per m<sup>2</sup>



[www.spire.co.za](http://www.spire.co.za)

## OFFICE SPACE TO RENT IN CENTURY CITY | MILLENNIUM BUSINESS PARK



### PROPERTY DETAILS

▲ Security	Yes	▲ Open Parking	2.0	▲ Floor Size	110m <sup>2</sup>
▲ Air Conditioning	Yes	▲ Covered Parking	2.0	▲ Zoning	Commercial

WEB REF: CL4103

Chantel Georgiadis | 0845251014 | [chantelg@spire.co.za](mailto:chantelg@spire.co.za)

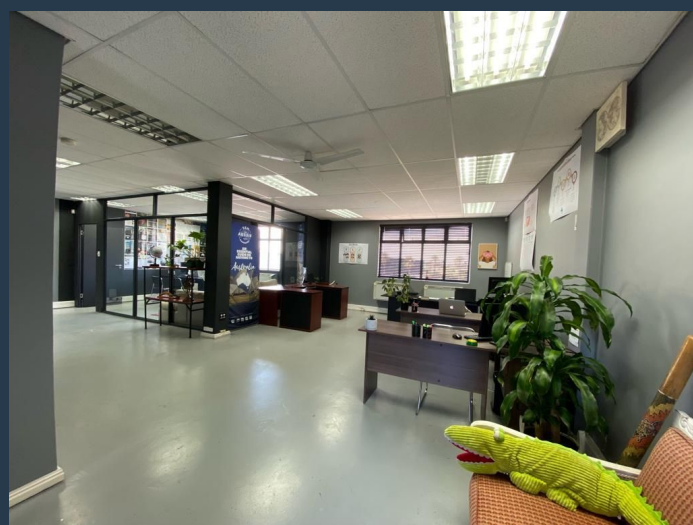
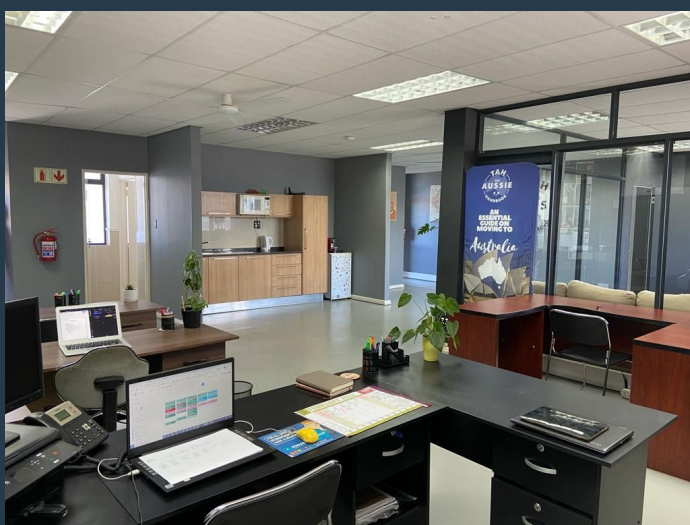
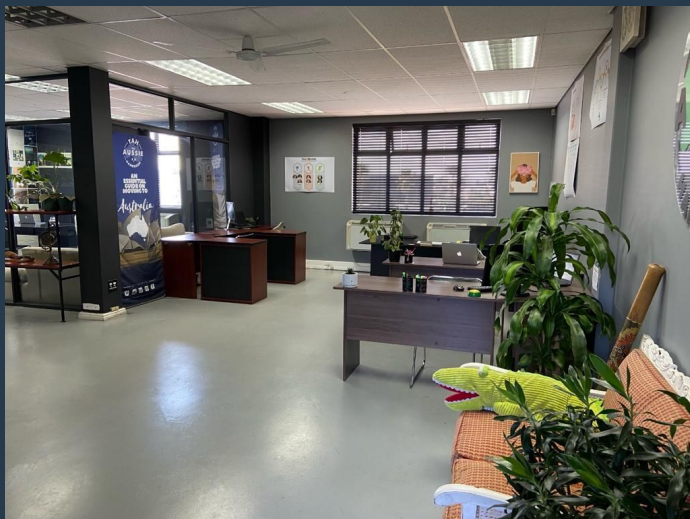
PROPERTY | WITH PURPOSE

**R15,576** per month excl. VAT

R141 per m<sup>2</sup>



[www.spire.co.za](http://www.spire.co.za)



## CONTACT US



**Chantel Georgiadis**  
Non-Principal Property Practitioner

☎ (021) 6854020  
📱 0845251014  
✉ [chantelg@spire.co.za](mailto:chantelg@spire.co.za)



**Kevin Hellyer**  
Candidate Property Practitioner

☎ (021) 6854020  
📱 061 484 5578  
✉ [kevinh@spire.co.za](mailto:kevinh@spire.co.za)

WEB REF: CL4103

Chantel Georgiadis | 0845251014 | [chantelg@spire.co.za](mailto:chantelg@spire.co.za)