

PROPERTY | WITH PURPOSE

R46,100 per month excl. VAT

R245 per m²



www.spire.co.za

TO LET

188 m² Property to rent on the Ground floor at No 1 Waterhouse Place in Century City. This ground-floor space at No. 1 Waterhouse in Century City offers an excellent opportunity to convert to an office. The large glass frontage ensures maximum exposure, while the open-plan design allows for a flexible layout to suit a variety of business needs. High ceilings and contemporary finishes create a stylish environment. The space is conveniently positioned with direct access to secure on-site parking, making it easy for customers and staff to visit. No. 1 Waterhouse is well-connected to major transport routes, including the N1 highway, with the MyCiTi bus service and taxi routes nearby. The surrounding area is home to corporate offices, hotels,...



WEB REF: CL3615

Chantel Georgiadis | 0845251014 | chantelg@spire.co.za

PROPERTY | WITH PURPOSE

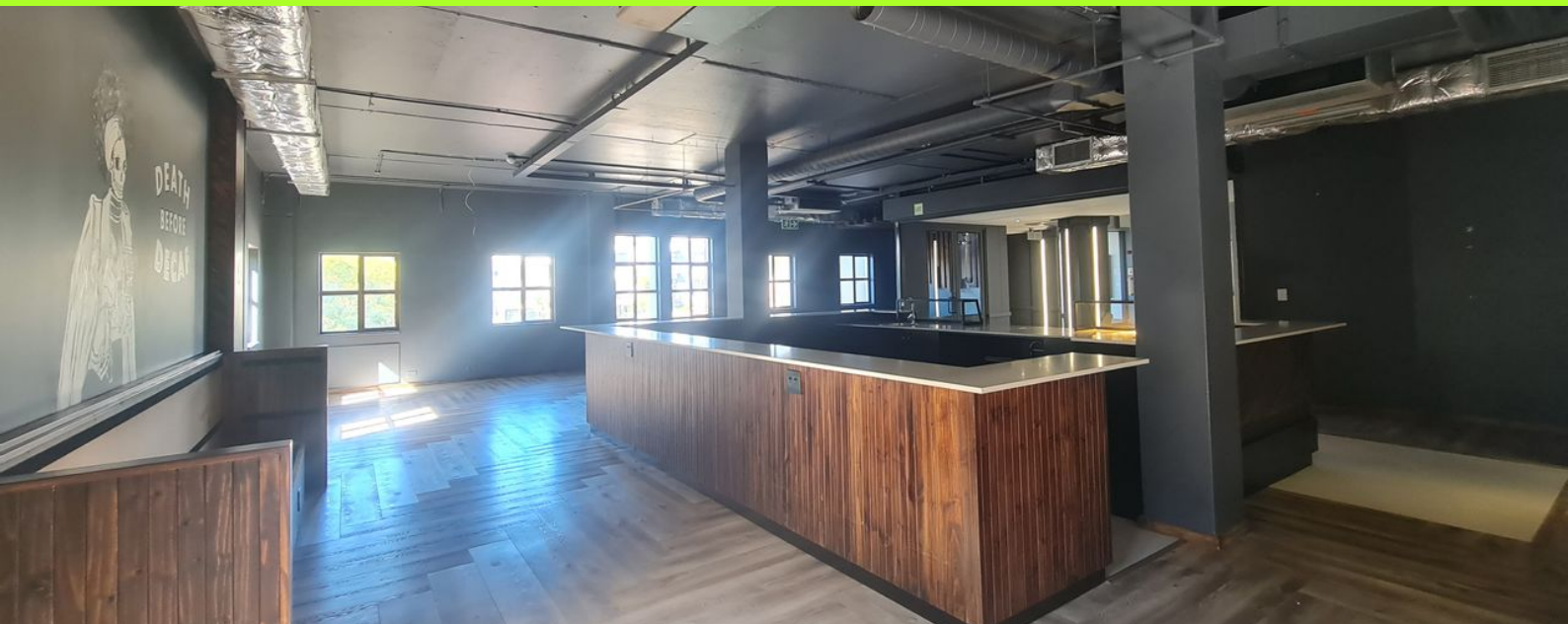
R46,100 per month excl. VAT

R245 per m²



www.spire.co.za

188 M² OFFICE OR RETAIL SPACE TO RENT CENTURY CITY I NO 1...



PROPERTY DETAILS

▲ Security	Yes	▲ Floor Size	188m ²
▲ Air Conditioning	Yes	▲ Land Size	188
		▲ Zoning	Commercial

WEB REF: CL3615

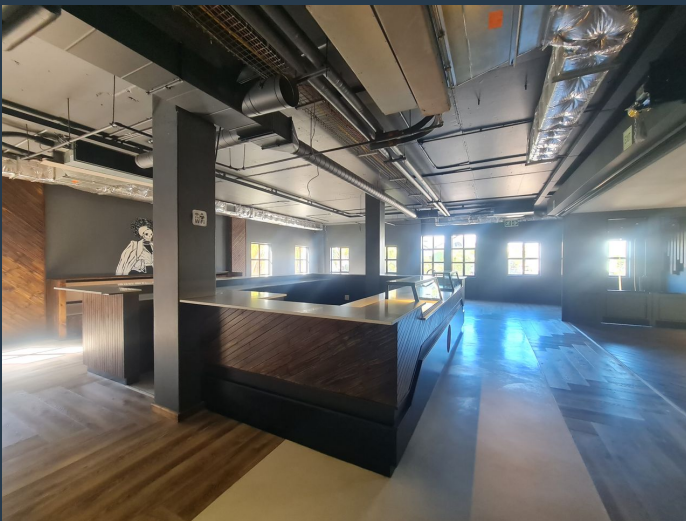
Chantel Georgiadis | 0845251014 | chantelg@spire.co.za

PROPERTY | WITH PURPOSE

R46,100 per month excl. VAT
R245 per m²



www.spire.co.za



CONTACT US



Chantel Georgiadis
Non-Principal Property Practitioner

☎ (021) 6854020
📱 0845251014
✉ chantelg@spire.co.za



Kevin Hellyer
Candidate Property Practitioner

☎ (021) 6854020
📱 061 484 5578
✉ kevinh@spire.co.za

WEB REF: CL3615

Chantel Georgiadis | 0845251014 | chantelg@spire.co.za