

PROPERTY | WITH PURPOSE

R14,430 per month excl. VAT

R130 per m²

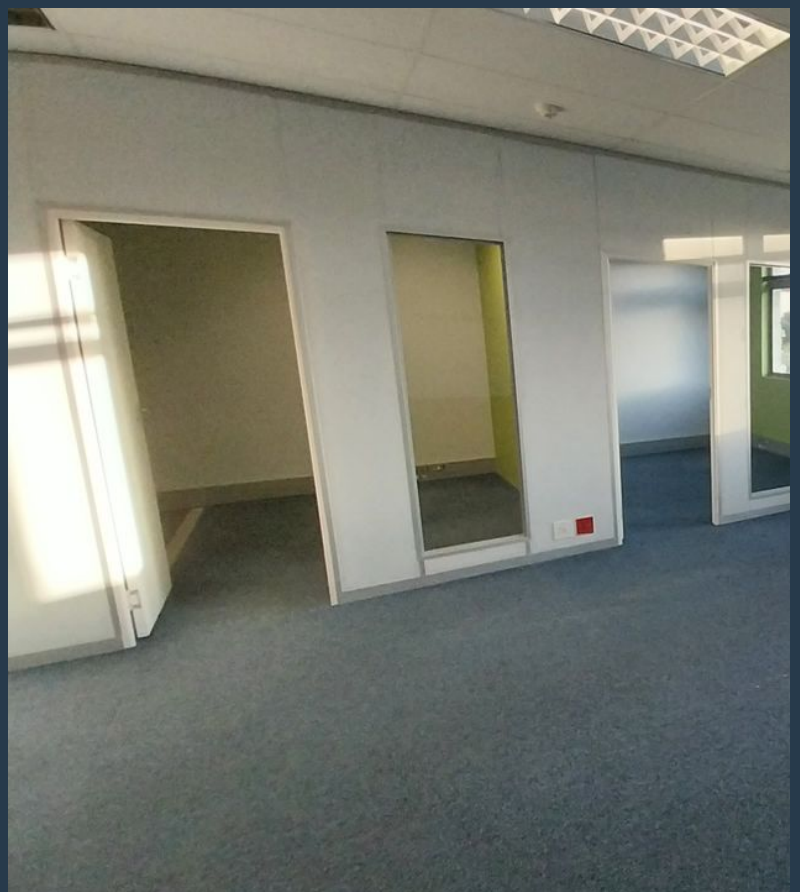


www.spire.co.za

TO LET



111 m² Office Space to Rent in Century City. Fitted out offices located on the ground floor at The Gatehouse. The space comprises mostly open plan space, a reception and meeting room. Full kitchen and access to shared bathrooms on each floor. The building offers 24 hour security, and tenants can lease both open and basement parking bays. There are a number of public parking bays as well in the area. The Gatehouse Building is positioned close to the main public transport hubs, as well as entry and exit points to the N1 Highway. Century City is located 10 km from central Cape Town on the N1, neighbored by the suburbs of Montague Gardens and Milnerton the perfect location for office space. Century City has emerged as one of the leading...



WEB REF: CL3547

Chantel Georgiadis | 0845251014 | chantelg@spire.co.za

PROPERTY | WITH PURPOSE

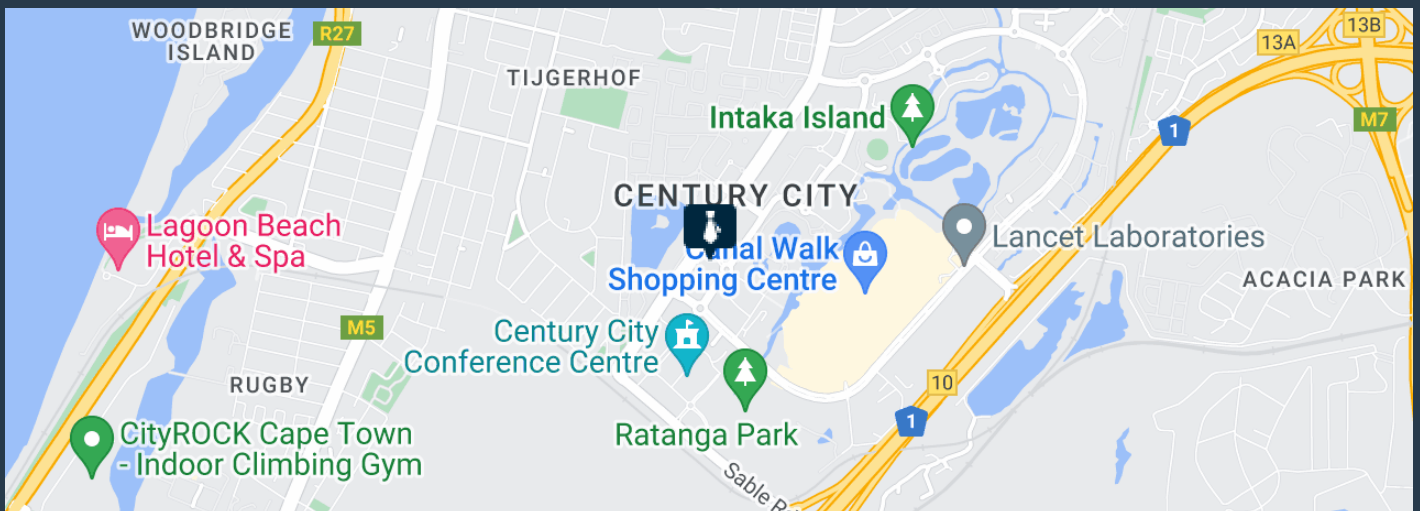
R14,430 per month excl. VAT

R130 per m²



www.spire.co.za

OFFICE SPACE TO RENT CENTURY CITY | THE GATEHOUSE



PROPERTY DETAILS

▲ Security	Yes	▲ Floor Size	111m ²
▲ Air Conditioning	Yes	▲ Land Size	111
		▲ Zoning	Commercial

WEB REF: CL3547

Chantel Georgiadis | 0845251014 | chantelg@spire.co.za

PROPERTY | WITH PURPOSE

R14,430 per month excl. VAT

R130 per m²



www.spire.co.za



CONTACT US



Chantel Georgiadis
Non-Principal Property Practitioner

☎ (021) 6854020
📱 0845251014
✉ chantelg@spire.co.za



Kevin Hellyer
Candidate Property Practitioner

☎ (021) 6854020
📱 061 484 5578
✉ kevinh@spire.co.za

WEB REF: CL3547

Chantel Georgiadis | 0845251014 | chantelg@spire.co.za