

PROPERTY | WITH PURPOSE

R45,000 per month excl. VAT

R100 per m²

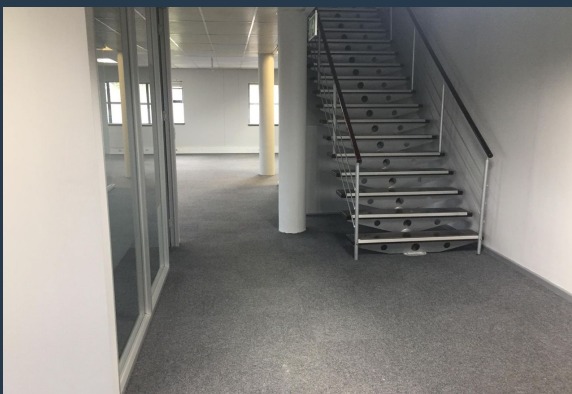


www.spire.co.za

TO LET



450 Sqm Office space to rent in Century City. 1st floor offices available at Waterford Place. Fitted out office with a reception area, meeting rooms and large open plan section. Full kitchen with access to shared bathrooms on each floor. Secure access control system with ample parking on site for tenants and visitors. The office includes a mezzanine area ideal for a staff pause area. This unit has up to 21 open parking bays to let from R650.00 per bay. The building has back up generator in place Century City has the right space for your business. With the biggest assortment of Office Space to Rent in Century City, Spire Properties is well positioned to find your ideal commercial space. Our area agents have years of experience in Century...



WEB REF: CL2833

Chantel Georgiadis | 0845251014 | chantelg@spire.co.za

PROPERTY | WITH PURPOSE

R45,000 per month excl. VAT

R100 per m²



www.spire.co.za

OFFICE TO RENT IN CENTURY CITY



PROPERTY DETAILS

▲ Security	Yes	▲ Floor Size	450m ²
▲ Air Conditioning	Yes	▲ Zoning	Commercial

WEB REF: CL2833

Chantel Georgiadis | 0845251014 | chantelg@spire.co.za

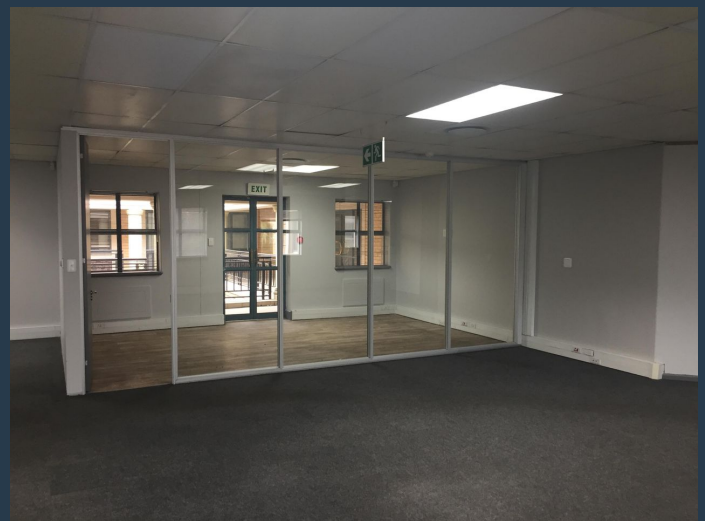
PROPERTY | WITH PURPOSE

R45,000 per month excl. VAT

R100 per m²



www.spire.co.za



CONTACT US



Chantel Georgiadis
Non-Principal Property Practitioner

☎ (021) 6854020
📱 0845251014
✉ chantelg@spire.co.za



Kevin Hellyer
Candidate Property Practitioner

☎ (021) 6854020
📱 061 484 5578
✉ kevinh@spire.co.za