

PROPERTY | WITH PURPOSE

R120,315 per month excl. VAT

R195 per m²

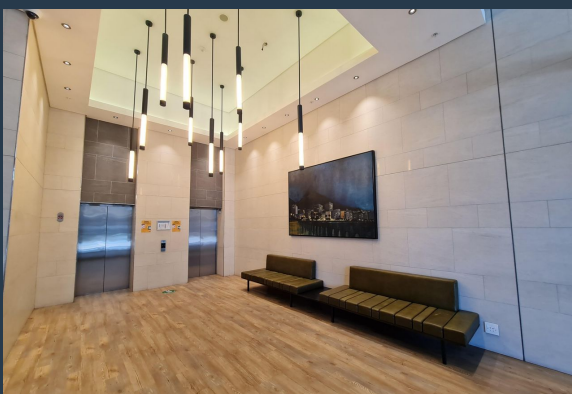
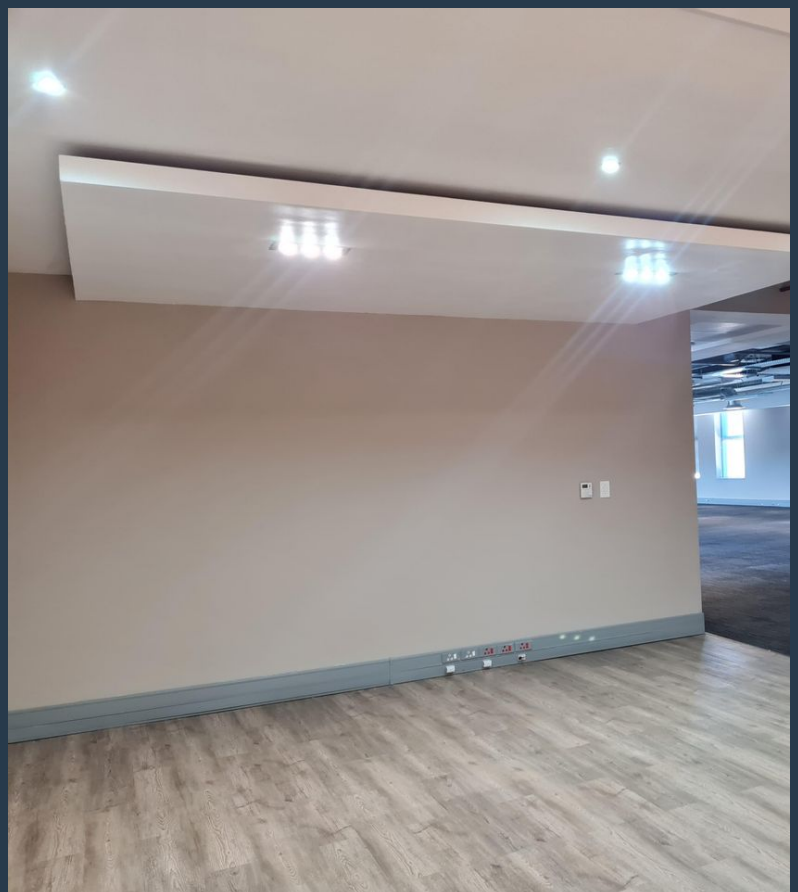


www.spire.co.za

TO LET



617 Sqm Office to Rent in Century City in the Annex Building. Fitted out offices in a secure building with lift access to all floors. There is 24 hour security as well as access control in place. Tenants can lease parking in the basement with ample visitor parking available. Large reception area, glass partitioned offices and separate office suites with a full kitchen. Century City has emerged as one of the leading developing hubs for business, lifestyle and entertainment purposes in Cape Town. This booming business hub and community is surrounded by beautiful canal waterways. The suburb is becoming increasingly popular and offers a central setting for work and leisure. To add to the beauty of the area, Century City Overlooks a wetland...



WEB REF: CL2815

Chantel Georgiadis | 0845251014 | chantelg@spire.co.za

PROPERTY | WITH PURPOSE

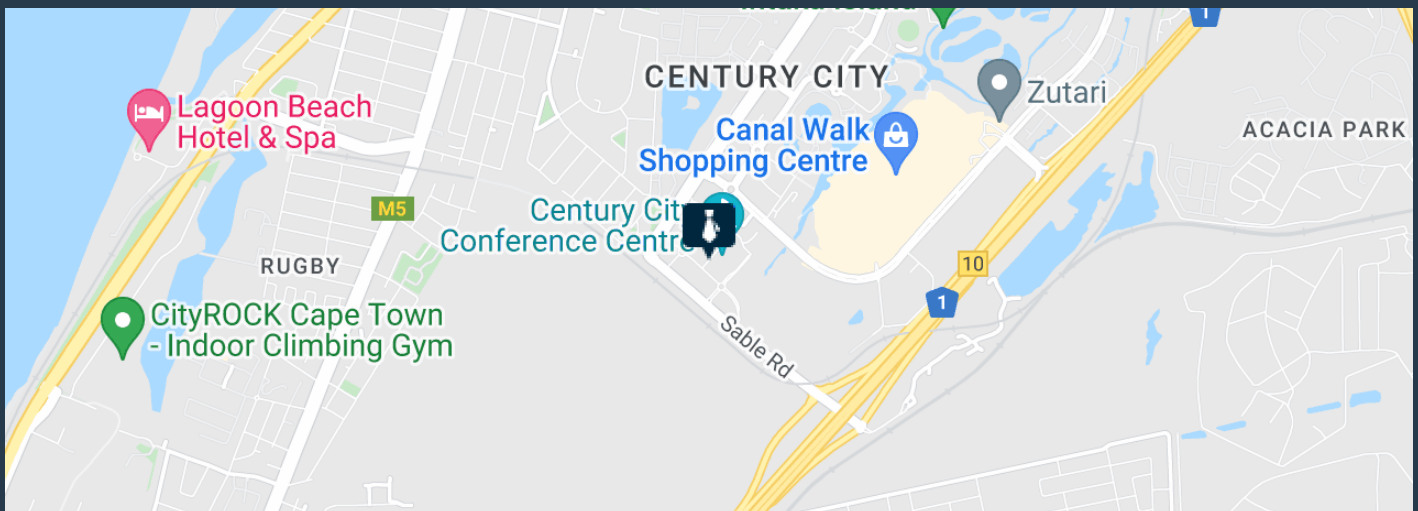
R120,315 per month excl. VAT

R195 per m²



www.spire.co.za

OFFICE SPACE TO RENT CENTURY CITY | THE ANNEX



PROPERTY DETAILS

| | | | |
|--------------------|-----|--------------|-------------------|
| ▲ Security | Yes | ▲ Floor Size | 617m ² |
| ▲ Air Conditioning | Yes | ▲ Zoning | Commercial |

WEB REF: CL2815

Chantel Georgiadis | 0845251014 | chantelg@spire.co.za

PROPERTY | WITH PURPOSE

R120,315 per month excl. VAT

R195 per m²



www.spire.co.za



CONTACT US



Chantel Georgiadis
Non-Principal Property Practitioner

☎ (021) 6854020
📱 0845251014
✉ chantelg@spire.co.za



Kevin Hellyer
Candidate Property Practitioner

☎ (021) 6854020
📱 061 484 5578
✉ kevinh@spire.co.za