

PROPERTY | WITH PURPOSE

**R40,095** per month excl. VAT

R135 per m<sup>2</sup>

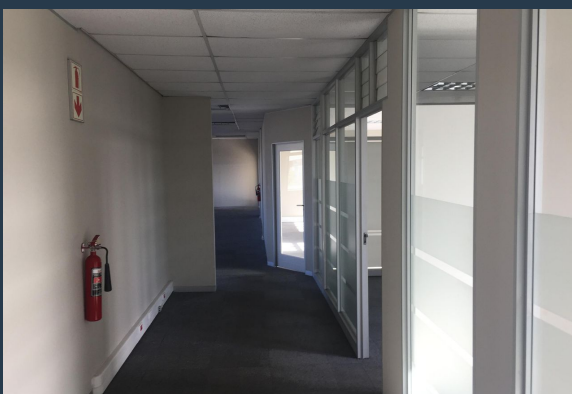
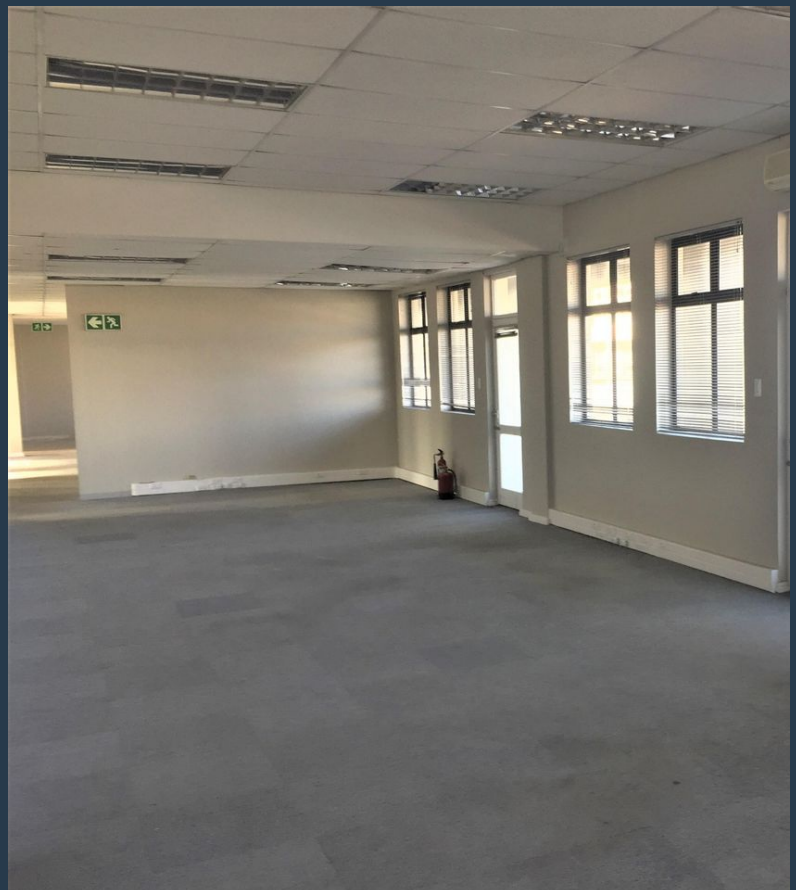


[www.spire.co.za](http://www.spire.co.za)

**TO LET**



297 Sqm Office space to rent in Century City. Neat fitted out office suite located at Millennium Business Park. This first floor office requires little work and is ready for a new tenant. There is a small reception area, meeting room and large general work space. Millennium Business Park is a modern A Grade business park with full access control as well as 24 hour security. Tenants have access to 4 parking bays with ample visitor bays in the park. Century City is situated between the Northern Suburbs and Southern Suburbs of Cape Town, making it one of the most centrally located business areas. Century City is a mixed-use area consisting of secure business parks and low-rise office buildings. The area has a large residential component as...



WEB REF: CL1910

Chantel Georgiadis | 0845251014 | [chantelg@spire.co.za](mailto:chantelg@spire.co.za)

PROPERTY | WITH PURPOSE

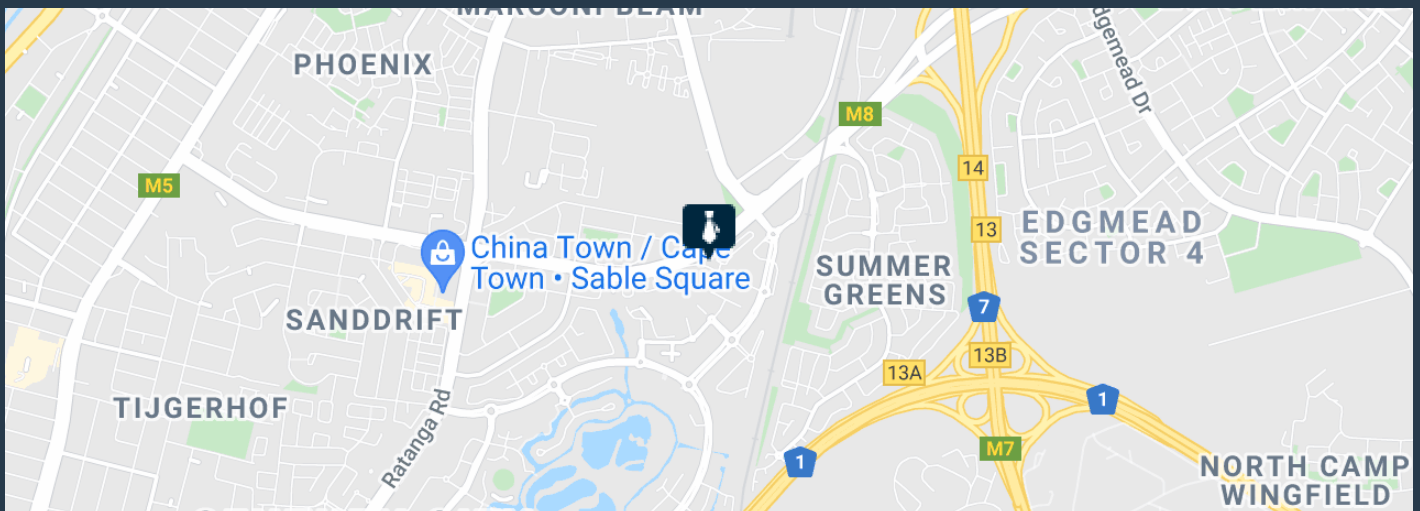
**R40,095** per month excl. VAT

R135 per m<sup>2</sup>



[www.spire.co.za](http://www.spire.co.za)

**OFFICE SPACE TO RENT IN CENTURY CITY | MILLENNIUM BUSINESS PARK**



**PROPERTY DETAILS**

▲ Security	Yes	▲ Floor Size	297m <sup>2</sup>
▲ Air Conditioning	Yes	▲ Zoning	Commercial

WEB REF: CL1910

Chantel Georgiadis | 0845251014 | [chantelg@spire.co.za](mailto:chantelg@spire.co.za)



PROPERTY | WITH PURPOSE

**R40,095** per month excl. VAT

R135 per m<sup>2</sup>



[www.spire.co.za](http://www.spire.co.za)



## CONTACT US



**Chantel Georgiadis**

Non-Principal Property Practitioner

☎ (021) 6854020

📱 0845251014

✉ [chantelg@spire.co.za](mailto:chantelg@spire.co.za)



**Kevin Hellyer**

Candidate Property Practitioner

☎ (021) 6854020

📱 061 484 5578

✉ [kevinh@spire.co.za](mailto:kevinh@spire.co.za)

WEB REF: CL1910

Chantel Georgiadis | 0845251014 | [chantelg@spire.co.za](mailto:chantelg@spire.co.za)