

PROPERTY | WITH PURPOSE

R40,425 per month excl. VAT

R175 per m²

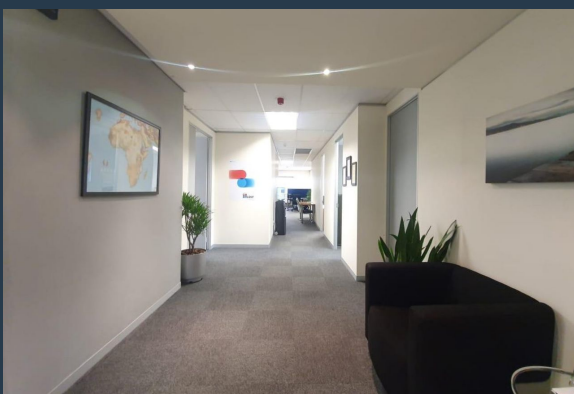
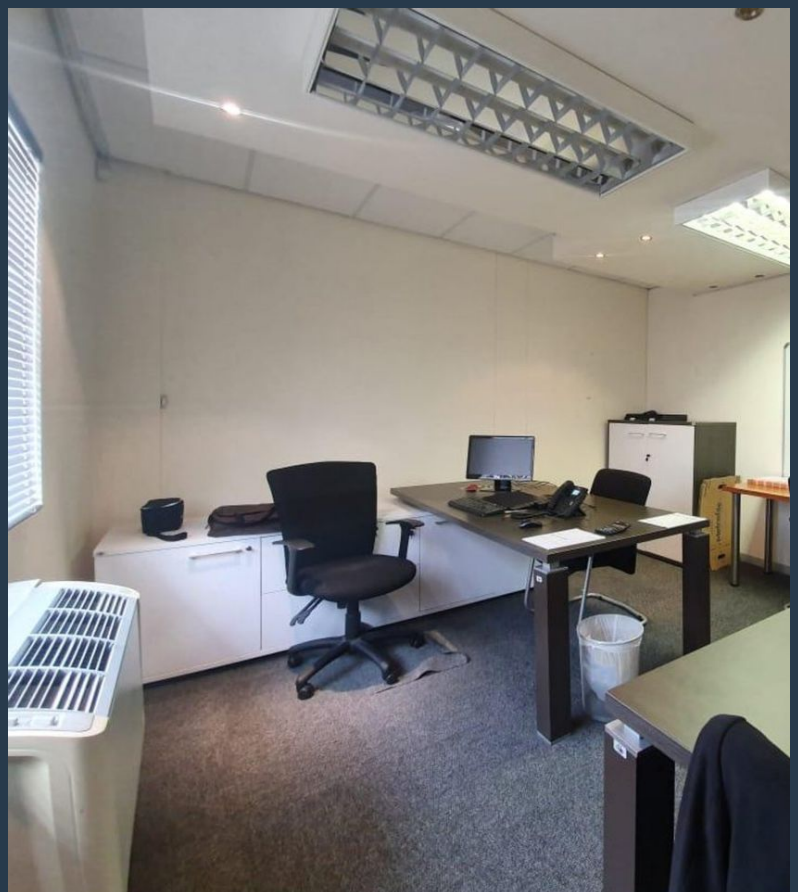


www.spire.co.za

TO LET



231 m² Office to rent in Century City. This first-floor office at 3 Waterford Mews overlooks the canal and gets consistent natural light through a full row of windows. The layout includes six private offices or meeting rooms, plus one larger enclosed room ideal for team sessions or small group work. The central section is open plan and flexible, offering a good foundation for custom workspace design. A small kitchenette sits off to the side, suitable for a fridge and light meal prep. Communal restrooms are located just down the passage. Waterford Mews is located in a quiet part of Century City with easy access to nearby retail, restaurants, and public transport. It's a practical option for teams looking for professional space with...



WEB REF: CL1495

Chantel Georgiadis | 0845251014 | chantelg@spire.co.za

PROPERTY | WITH PURPOSE

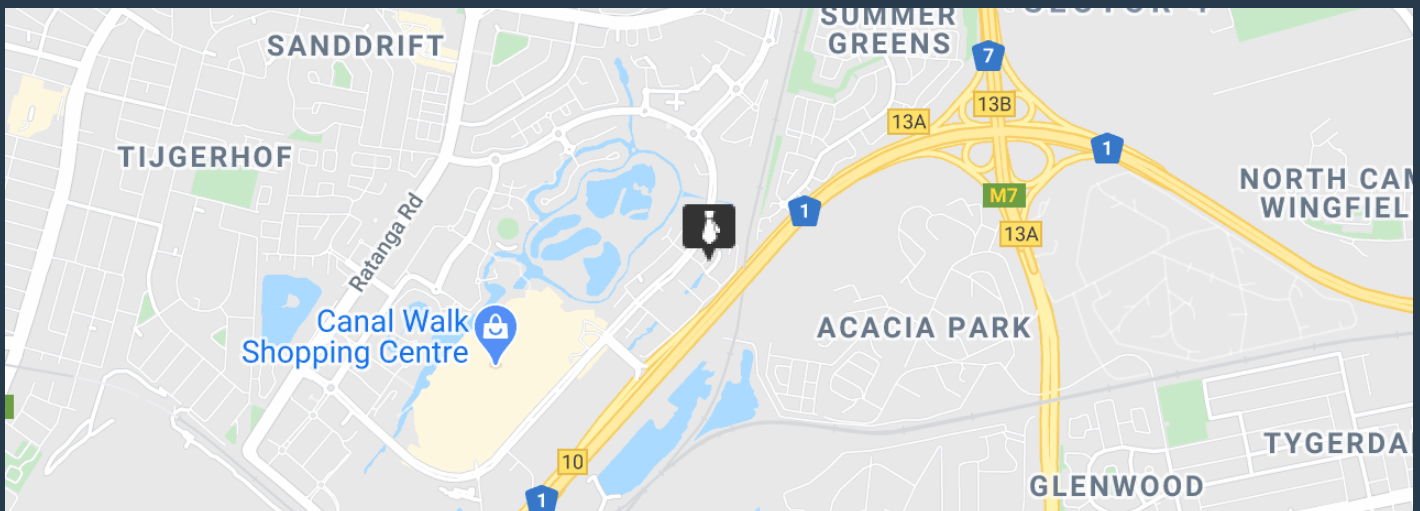
R40,425 per month excl. VAT

R175 per m²



www.spire.co.za

231 M² OFFICE SPACE TO RENT CENTURY CITY | WATERFORD MEWS 3



PROPERTY DETAILS

▲ Security	Yes	▲ Floor Size	231m ²
▲ Air Conditioning	Yes	▲ Land Size	231
		▲ Zoning	Commercial

WEB REF: CL1495

Chantel Georgiadis | 0845251014 | chantelg@spire.co.za

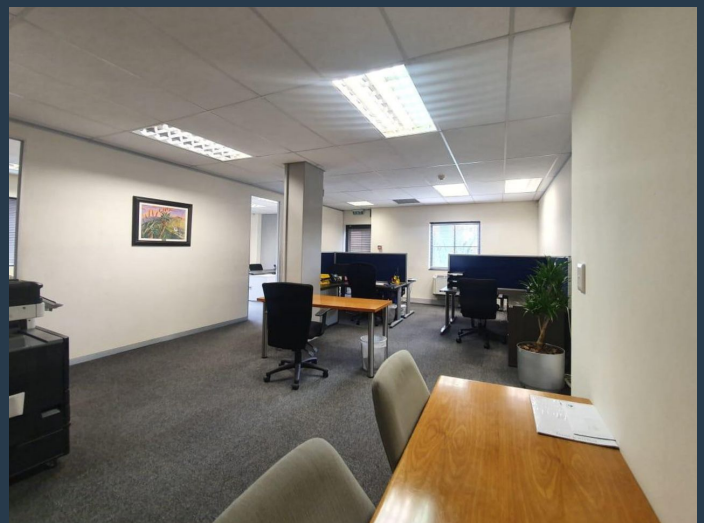
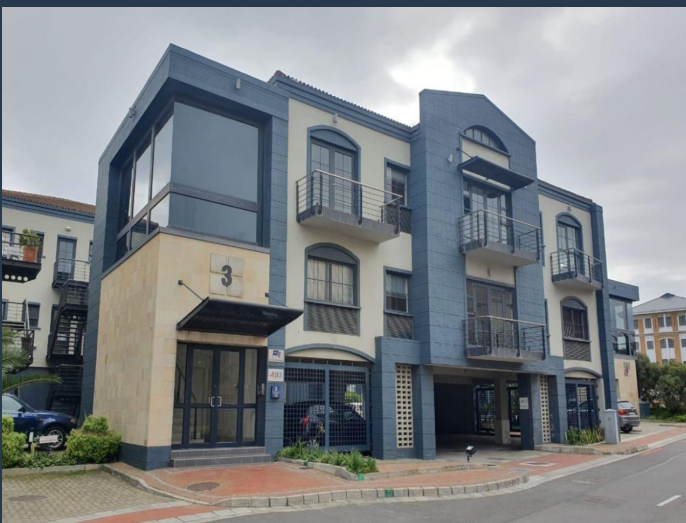
PROPERTY | WITH PURPOSE

R40,425 per month excl. VAT

R175 per m²



www.spire.co.za



CONTACT US



SPIRE

Chantel Georgiadis

Non-Principal Property Practitioner

☎ (021) 6854020

📱 0845251014

✉ chantelg@spire.co.za



SPIRE

Kevin Hellyer

Candidate Property Practitioner

☎ (021) 6854020

📱 061 484 5578

✉ kevinh@spire.co.za

WEB REF: CL1495

Chantel Georgiadis | 0845251014 | chantelg@spire.co.za