

PROPERTY | WITH PURPOSE

**R186,060** per month excl. VAT

R130 per m<sup>2</sup>



[www.spire.co.za](http://www.spire.co.za)

**TO LET**



1,432 Sqm Office Space to rent in Century City. Ground and 1st floor office space available to let at Century Falls. This office is fitted out, and includes a kitchen with staff area, several office suited and meeting rooms as well as large open plan area. The building has a ground floor reception area, and basement parking for tenants. Century Falls has full access control as well as 24 hour security in place. There is quick and easy access to the N1 via Century Boulevard. The building is on the Myciti bus route, and within walking distance to Canal Walk shopping Center. Century City is located 10 km from central Cape Town on the N1, neighbored by the suburbs of Montague Gardens and Milnerton the perfect location for office space....



WEB REF: CL1418

Chantel Georgiadis | 0845251014 | [chantelg@spire.co.za](mailto:chantelg@spire.co.za)

PROPERTY | WITH PURPOSE

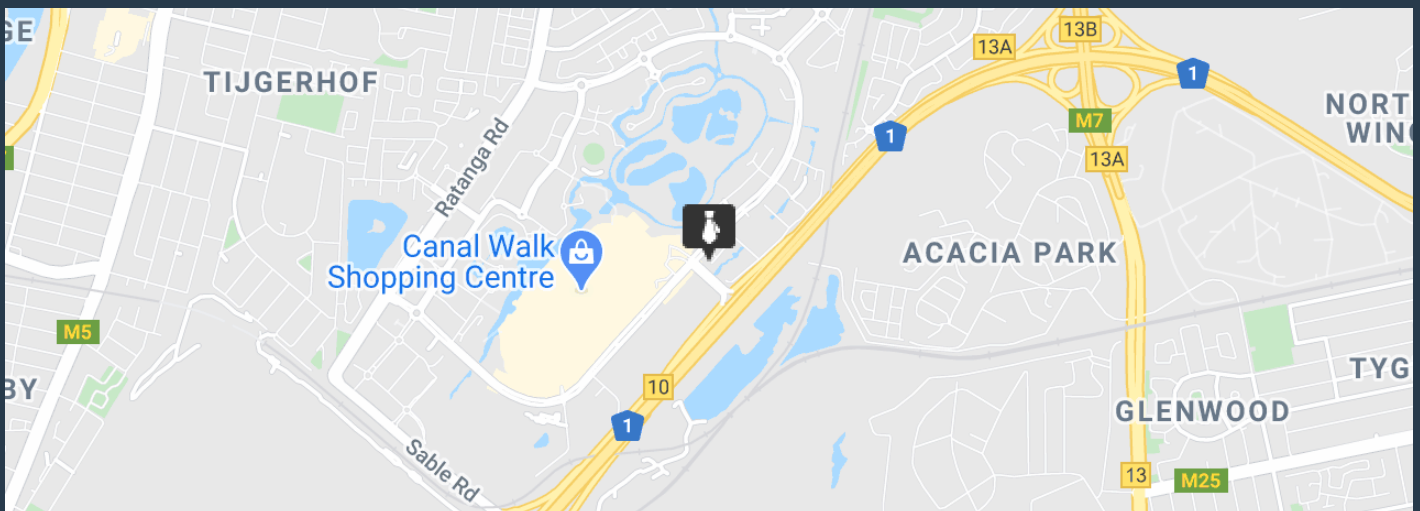
**R186,060** per month excl. VAT

R130 per m<sup>2</sup>



[www.spire.co.za](http://www.spire.co.za)

## OFFICE SPACE TO RENT CENTURY CITY | CENTURY FALLS



### PROPERTY DETAILS

▲ Security	Yes	▲ Floor Size	1432m <sup>2</sup>
▲ Air Conditioning	Yes	▲ Land Size	1432
		▲ Zoning	Commercial

WEB REF: CL1418

Chantel Georgiadis | 0845251014 | [chantelg@spire.co.za](mailto:chantelg@spire.co.za)

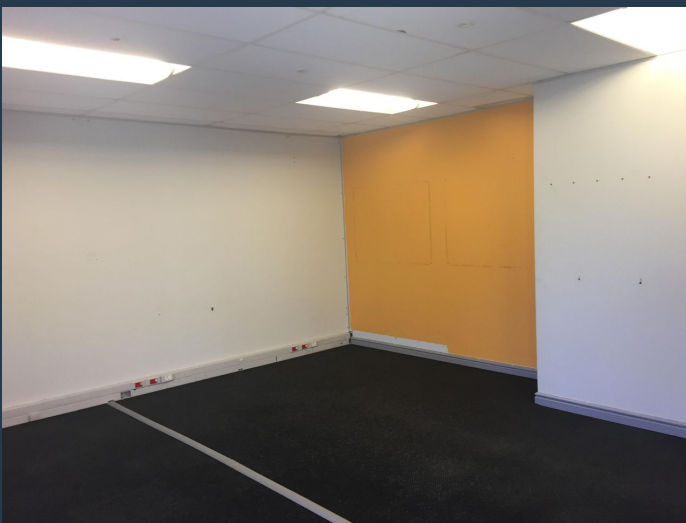
PROPERTY | WITH PURPOSE

**R186,060** per month excl. VAT

R130 per m<sup>2</sup>



[www.spire.co.za](http://www.spire.co.za)



## CONTACT US



**Chantel Georgiadis**

Non-Principal Property Practitioner

☎ (021) 6854020

📱 0845251014

✉ [chantelg@spire.co.za](mailto:chantelg@spire.co.za)



**Kevin Hellyer**

Candidate Property Practitioner

☎ (021) 6854020

📱 061 484 5578

✉ [kevinh@spire.co.za](mailto:kevinh@spire.co.za)

WEB REF: CL1418

Chantel Georgiadis | 0845251014 | [chantelg@spire.co.za](mailto:chantelg@spire.co.za)