

PROPERTY | WITH PURPOSE

R34,075 per month excl. VAT

R145 per m<sup>2</sup>



[www.spire.co.za](http://www.spire.co.za)

TO LET

235 Sqm Office Space to Rent in Century City. Fitted out office space located on the ground floor at 1 Waterford Place. The offices includes a full kitchen, access to bathrooms and a mostly open plan layout. Waterford Place has full access control as well as 24 hour security. Tenants will be able to lease basement as well as open parking bays in the park. There is quick and easy access to the N1 Highway via Century Boulevard. Century City is situated between the Northern Suburbs and Southern Suburbs of Cape Town, making it one of the most centrally located business areas. Century City is a mixed-use area consisting of secure business parks and low-rise office buildings. The area has a large residential component as well as several retail...



WEB REF: CL1279

Chantel Georgiadis | 0845251014 | [chantelg@spire.co.za](mailto:chantelg@spire.co.za)

PROPERTY | WITH PURPOSE

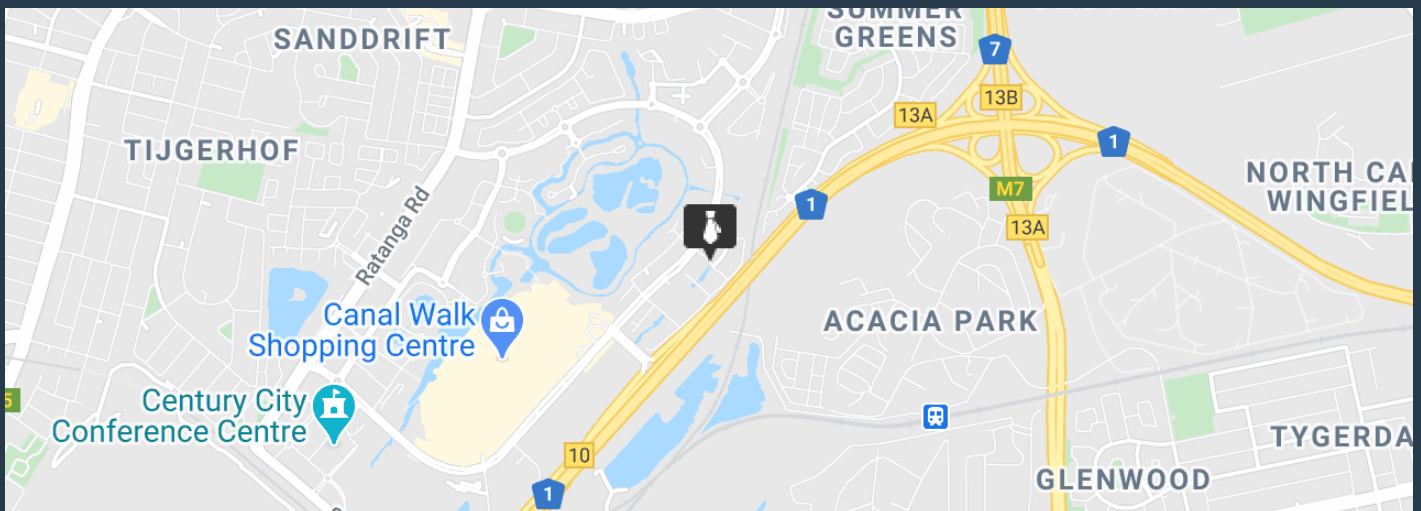
**R34,075** per month excl. VAT

R145 per m<sup>2</sup>



[www.spire.co.za](http://www.spire.co.za)

## OFFICE SPACE TO RENT CENTURY CITY



### PROPERTY DETAILS

▲ Security	Yes	▲ Open Parking	800.0	▲ Floor Size	235m <sup>2</sup>
▲ Air Conditioning	Yes	▲ Basement Parking	980.0	▲ Zoning	Commercial

WEB REF: CL1279

Chantel Georgiadis | 0845251014 | [chantelg@spire.co.za](mailto:chantelg@spire.co.za)

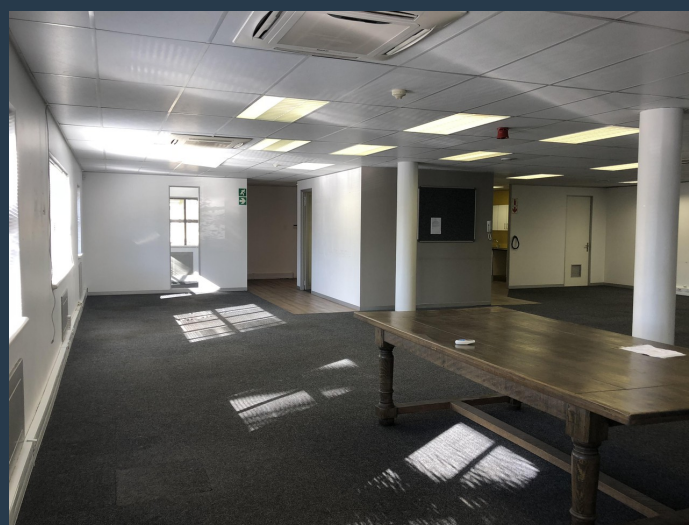
PROPERTY | WITH PURPOSE

**R34,075** per month excl. VAT

R145 per m<sup>2</sup>



[www.spire.co.za](http://www.spire.co.za)



## CONTACT US



**Chantel Georgiadis**  
Non-Principal Property Practitioner

☎ (021) 6854020  
📱 0845251014  
✉ [chantelg@spire.co.za](mailto:chantelg@spire.co.za)



**Kevin Hellyer**  
Candidate Property Practitioner

☎ (021) 6854020  
📱 061 484 5578  
✉ [kevinh@spire.co.za](mailto:kevinh@spire.co.za)

WEB REF: CL1279

Chantel Georgiadis | 0845251014 | [chantelg@spire.co.za](mailto:chantelg@spire.co.za)