

PROPERTY | WITH PURPOSE

**R45,360** per month excl. VAT

R189 per m<sup>2</sup>

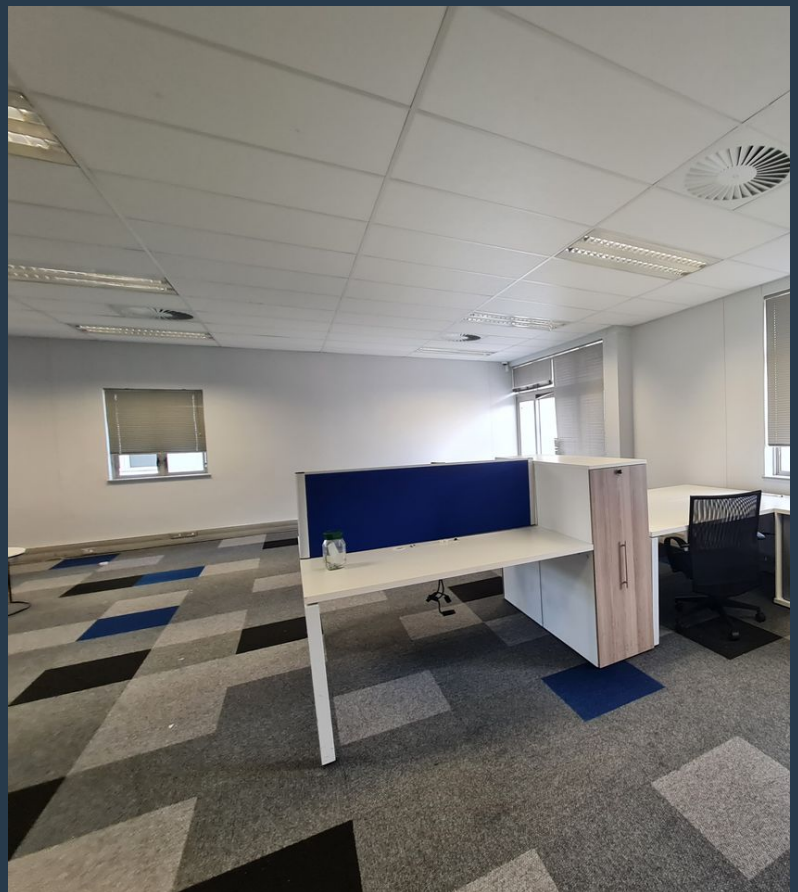


[www.spire.co.za](http://www.spire.co.za)

**TO LET**



240 m<sup>2</sup> Office Space to Rent in Century City. 1st floor office at Hyde Park House located on Park Lane. Neat office space with existing fit-out. This office is allocated 6 basement parking bays at R1,100 per bay. The space also has a small balcony. There is direct access to the basement parking level and the building has full access control systems. For peace of mind, the building is equipped with a full backup generator, ensuring uninterrupted power supply and business continuity during outages. Century City is strategically well positioned between Cape Town's Northern and Southern Suburbs with easy access to the N1. Century City is a prime example of an innovative and highly successful mixed-use, development. Century City incorporates...



WEB REF: CL1219

Chantel Georgiadis | 0845251014 | [chantelg@spire.co.za](mailto:chantelg@spire.co.za)



PROPERTY | WITH PURPOSE

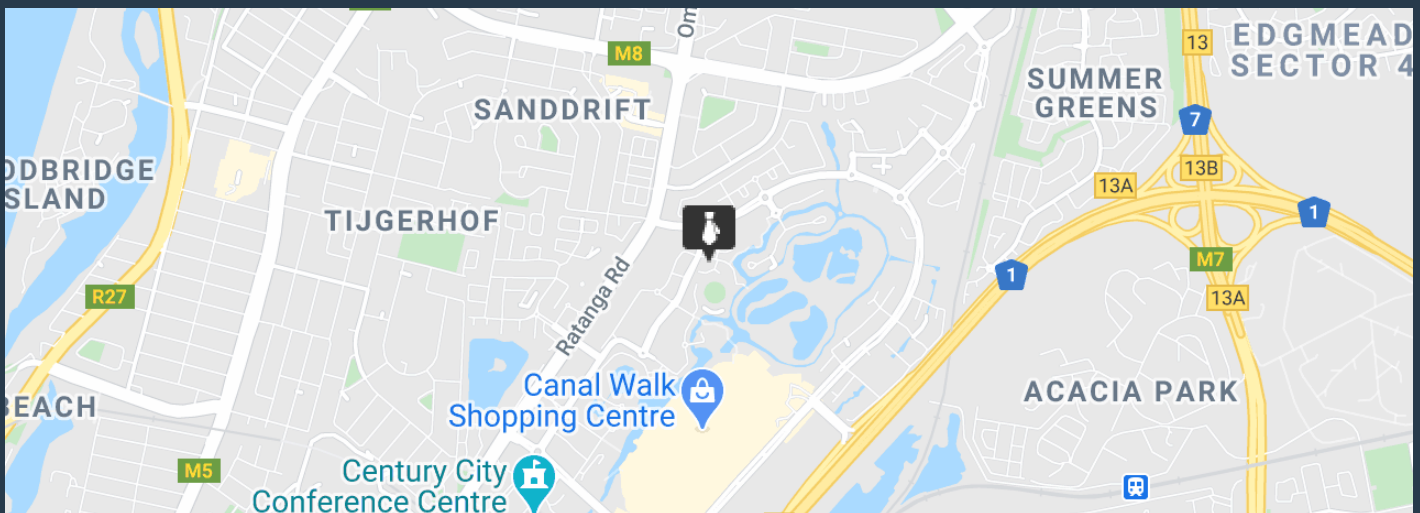
**R45,360** per month excl. VAT

R189 per m<sup>2</sup>



[www.spire.co.za](http://www.spire.co.za)

**240 M<sup>2</sup> OFFICE SPACE TO RENT CENTURY CITY | HYDE PARK HOUSE**



**PROPERTY DETAILS**

▲ Security	Yes	▲ Basement Parking	1100.0	▲ Floor Size	240m <sup>2</sup>
▲ Air Conditioning	Yes			▲ Land Size	240
				▲ Zoning	Commercial

WEB REF: CL1219

Chantel Georgiadis | 0845251014 | [chantelg@spire.co.za](mailto:chantelg@spire.co.za)

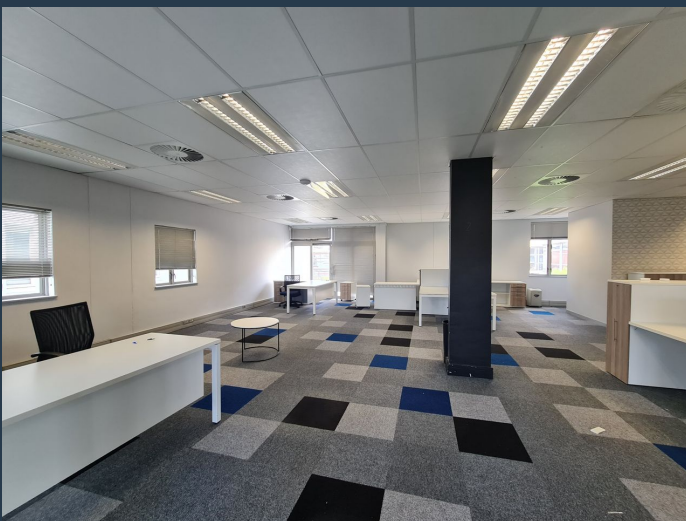
PROPERTY | WITH PURPOSE

**R45,360** per month excl. VAT

R189 per m<sup>2</sup>



[www.spire.co.za](http://www.spire.co.za)



## CONTACT US



**Chantel Georgiadis**  
Non-Principal Property Practitioner

☎ (021) 6854020  
📱 0845251014  
✉ [chantelg@spire.co.za](mailto:chantelg@spire.co.za)



**Kevin Hellyer**  
Candidate Property Practitioner

☎ (021) 6854020  
📱 061 484 5578  
✉ [kevinh@spire.co.za](mailto:kevinh@spire.co.za)