

PROPERTY | WITH PURPOSE

R31,140 per month excl. VAT

R60 per m²



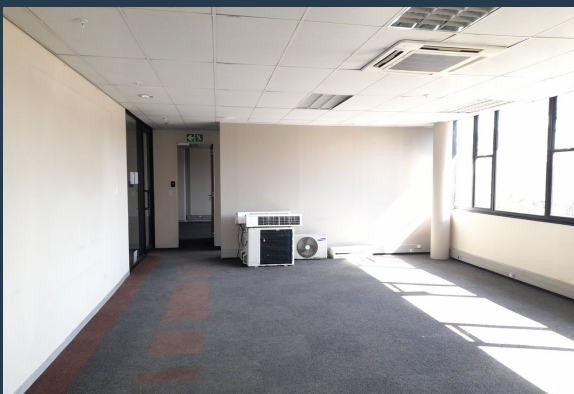
www.spire.co.za

TO LET

ISANDO BUSINESS PARK

1 Hulley Hulley Road

519m² Commercial Office to rent in Isando. The property offers, a wonderful reception area that can be fitted with a meeting/waiting room. The upper floor area has offices with great natural light, a kitchenette, ablutions and pause areas. This well-maintained property has a 24hr on site security, CCTV, electric fencing, and a guardhouse. The location of the property is great, it's about 1 km from OR. Tambo International Airport, with easy access to R21, R24 Rhodesfield Gautrain Station and Isando train station. We have been helping businesses just like yours to find their perfect commercial, retail or industrial spaces. Our team of property professionals are ready to find your perfect space. We have a longstanding relationship with...



WEB REF: SCL1011

Nadeema Chothia | 083 305 5354 | nadeemac@spire.co.za

PROPERTY | WITH PURPOSE

R31,140 per month excl. VAT

R60 per m²



www.spire.co.za

COMMERCIAL OFFICE TO RENT IN ISANDO, JOHANNESBURG



PROPERTY DETAILS

- ▲ Floor Size 519m²
- ▲ Land Size 48000
- ▲ Zoning Commercial

WEB REF: SCL1011

Nadeema Chothia | 083 305 5354 | nadeemac@spire.co.za

PROPERTY | WITH PURPOSE

R31,140 per month excl. VAT

R60 per m²



www.spire.co.za



CONTACT US



Nadeema Chothia

Agent

 (011) 2685871

 083 305 5354

 nadeemac@spire.co.za

WEB REF: SCL1011

Nadeema Chothia | 083 305 5354 | nadeemac@spire.co.za