

PROPERTY | WITH PURPOSE

R6,715 per month excl. VAT

R79 per m²



www.spire.co.za

TO LET



85m2 Office to let in Isando Business Park, Unit B2 First Floor 01 offers an open plan office area, common kitchen and common Ablution facilities, Central air-conditioning, 24hr security, CCTV, electric fencing and a guardhouse. The all round glazing brings in great natural lighting and beautiful views. The location of the property is great, about 1 km from OR. Tambo International Airport, with easy access to R21, R24 Rhodesfield Gautrain Station and Isando train station. Walls and carpets are looking great. This will be a great office address in a prime location. We have been helping businesses just like yours to find their perfect commercial, retail or industrial spaces. Our team of property professionals are ready to find your...



WEB REF: CL2806

Nadeema Chothia | 083 305 5354 | nadeemac@spire.co.za

PROPERTY | WITH PURPOSE

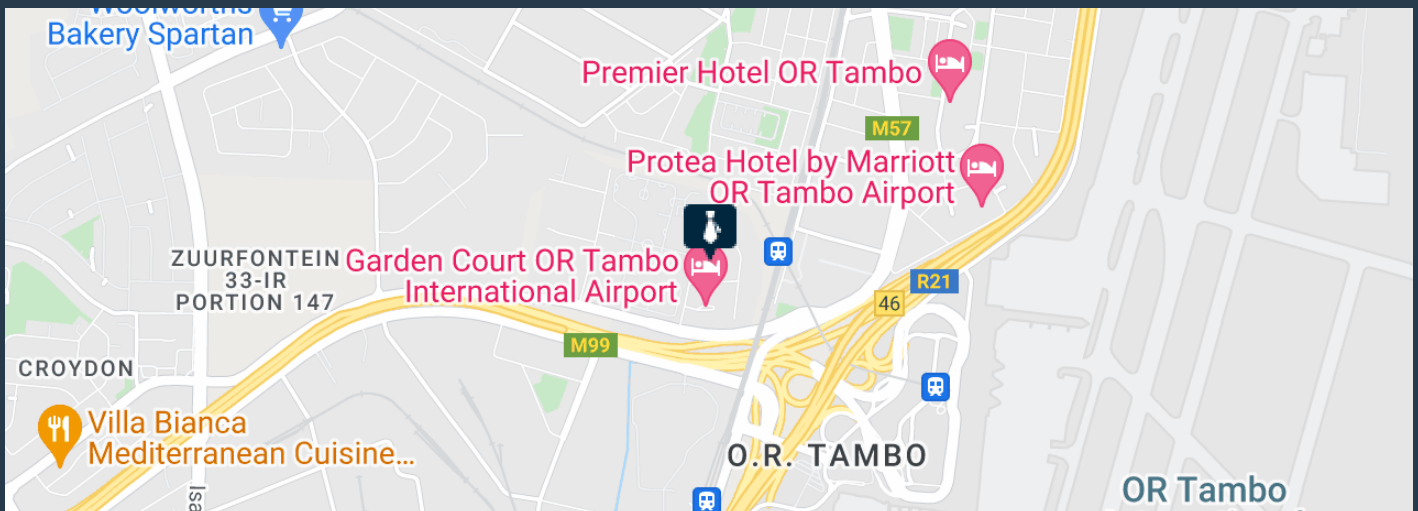
R6,715 per month excl. VAT

R79 per m²



www.spire.co.za

OFFICES TO LET IN ISANDO, KEMPTON PARK



PROPERTY DETAILS

▲ Security	Yes	▲ Floor Size	85m ²
▲ Air Conditioning	Yes	▲ Zoning	Commercial

WEB REF: CL2806

Nadeema Chothia | 083 305 5354 | nadeemac@spire.co.za

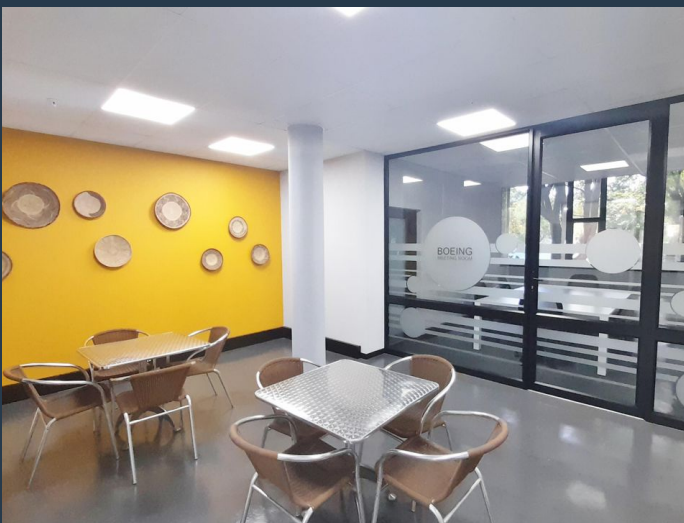
PROPERTY | WITH PURPOSE

R6,715 per month excl. VAT

R79 per m²



www.spire.co.za



CONTACT US



Nadeema Chothia

Agent

(011) 2685871

083 305 5354

nadeemac@spire.co.za