

PROPERTY | WITH PURPOSE

R22,275 per month excl. VAT

R99 per m²



www.spire.co.za

TO LET



225m2 Office space to rent in Rosebank. The premise is a corner second floor office with natural light flooding into the space. The building is known for a tenant mix which includes businesses in the arts and entertainment industries. The building has solar power and generator back up power as well as 24-hour security. This space would be suitable for a show room and office space with great visibility from Jan Smuts Avenue. Rosebank is an ideally situated area hence infrastructure is world class, as it's within close proximity to other areas such as Sandton so it benefits largely from the world-class roadways in and around the area as well. Some prominent school in the area include Rosebank Primary School, St Teresa's School, Kingsmead...



WEB REF: SCL1000

Nadeema Chothia | 083 305 5354 | nadeemac@spire.co.za

PROPERTY | WITH PURPOSE

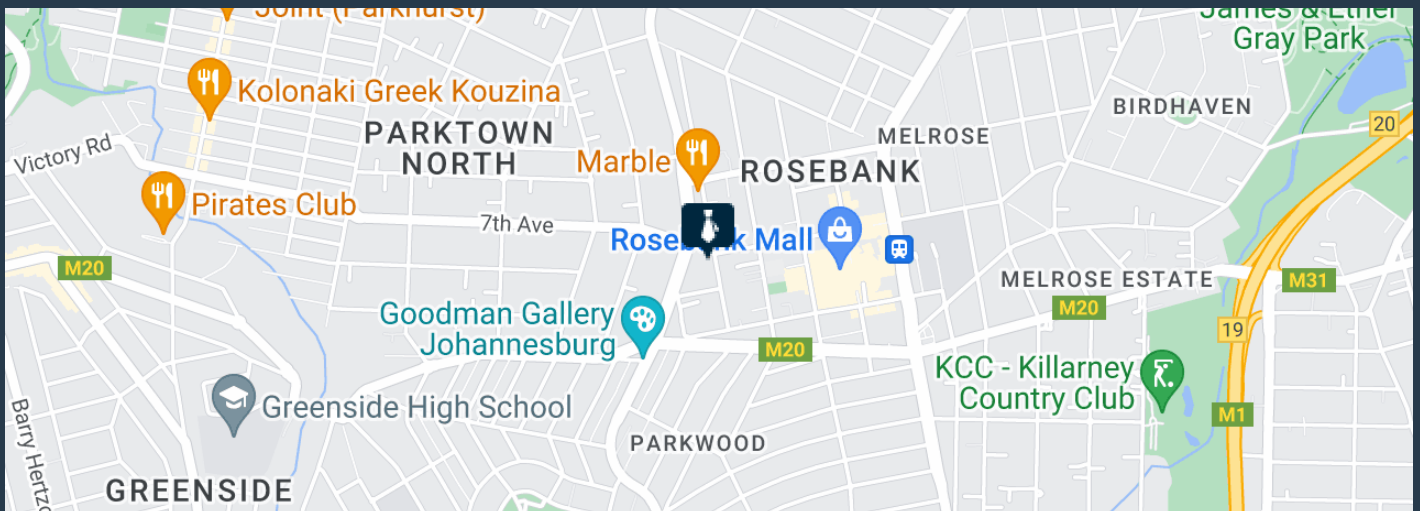
R22,275 per month excl. VAT

R99 per m²



www.spire.co.za

OFFICE SPACE TO RENT IN ROSEBANK



PROPERTY DETAILS

- ▲ Floor Size 225m²
- ▲ Zoning Commercial

WEB REF: SCL1000

Nadeema Chothia | 083 305 5354 | nadeemac@spire.co.za

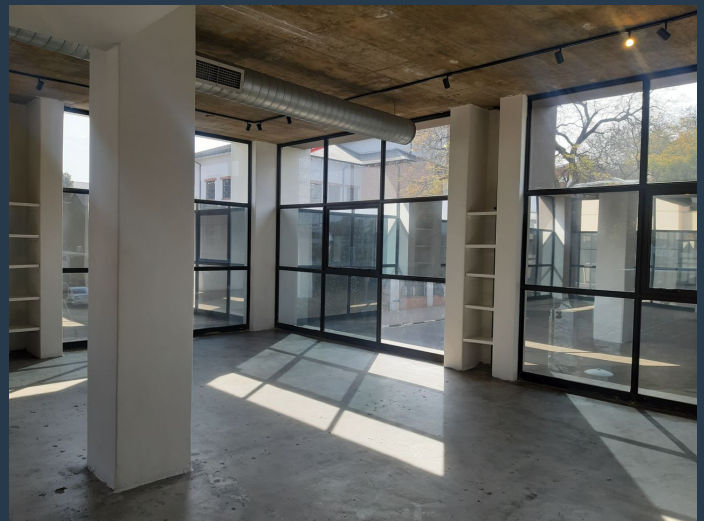
PROPERTY | WITH PURPOSE

R22,275 per month excl. VAT

R99 per m²



www.spire.co.za



CONTACT US



Nadeema Chothia

Agent

 (011) 2685871

 083 305 5354

 nadeemac@spire.co.za

WEB REF: SCL1000

Nadeema Chothia | 083 305 5354 | nadeemac@spire.co.za