

PROPERTY | WITH PURPOSE

R22,310 per month excl. VAT

R115 per m<sup>2</sup>



[www.spire.co.za](http://www.spire.co.za)

TO LET



194m2 office space to rent in the Rosebank. The ground floor premise is fully fitted and ready for occupation. The premise has a board room as you enter the premise. There is a kitchen and an eat in area. There are offices and on with a balcony. The office park is located just off Jan Smuts Ave and has easy access to public transport and a walking distance from retaurants and shops. Commercial Property to Rent Rosebank. Rosebank is one of Johannesburgs most sought after locations for commercial and residential property. Rosebank is a cosmopolitan commercial and residential suburb to the north of central Johannesburg, South Africa. Rosebank has undergone a major face-lift in recent years, with the extensive redevelopment of both the...



WEB REF: SCL628

Nadeema Chothia | 083 305 5354 | [nademac@spire.co.za](mailto:nademac@spire.co.za)



PROPERTY | WITH PURPOSE

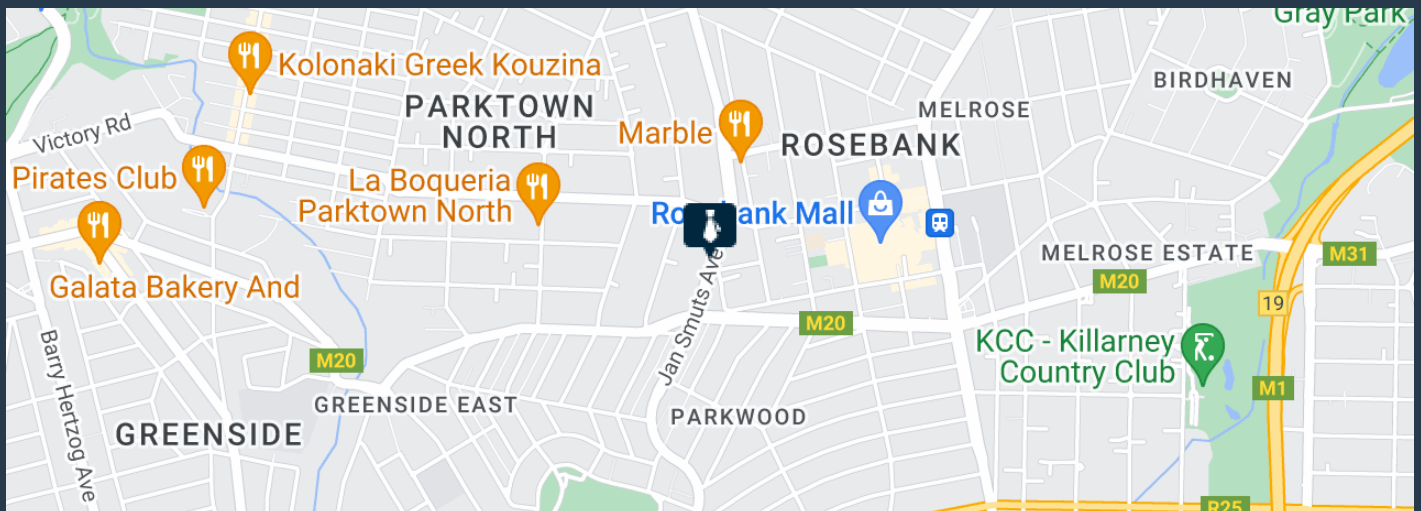
**R22,310** per month excl. VAT

R115 per m<sup>2</sup>



[www.spire.co.za](http://www.spire.co.za)

## OFFICE SPACE TO RENT IN ROSEBANK



### PROPERTY DETAILS

- ▲ Floor Size 194m<sup>2</sup>
- ▲ Zoning Commercial

WEB REF: SCL628

Nadeema Chothia | 083 305 5354 | [nademac@spire.co.za](mailto:nademac@spire.co.za)

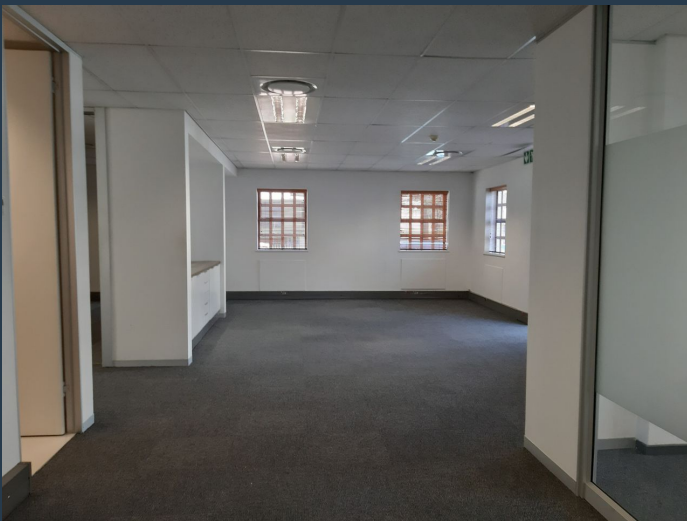
PROPERTY | WITH PURPOSE

**R22,310** per month excl. VAT

R115 per m<sup>2</sup>



[www.spire.co.za](http://www.spire.co.za)



## CONTACT US



**Nadeema Chothia**

Agent

☎ (011) 2685871

📱 083 305 5354

✉ [nadeemac@spire.co.za](mailto:nadeemac@spire.co.za)

WEB REF: SCL628

Nadeema Chothia | 083 305 5354 | [nadeemac@spire.co.za](mailto:nadeemac@spire.co.za)