

PROPERTY | WITH PURPOSE

R126,600 per month excl. VAT

R200 per m²



www.spire.co.za

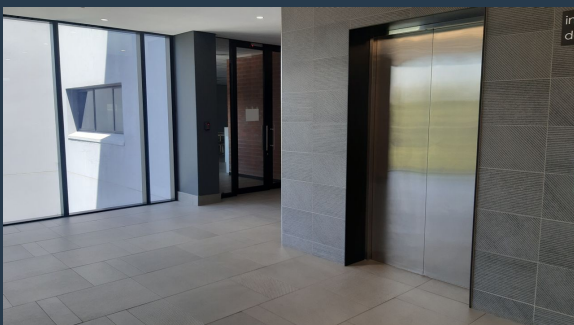
TO LET



11 ON 9TH

11 9th Street

633 Sqm Office to Rent in Houghton Estate. Fitted out offices to let on the 2nd floor. The premises boast a P-grade rating, ensuring superior quality and functionality. With the added convenience of backup power and water supply, your business operations will run smoothly even during unexpected situations. Step into the spacious kitchen area, complete with comfortable seating, providing the perfect spot for breaks and collaborative discussions. The office layout includes a mix of individual offices, an inviting open plan area, and a well-appointed boardroom, catering to various working preferences and team dynamics. In addition to the well-designed interiors, this property offers ample basement parking bays, ensuring convenience for both...



WEB REF: SCL472

Nadeema Chothia | 083 305 5354 | nadeemac@spire.co.za

PROPERTY | WITH PURPOSE

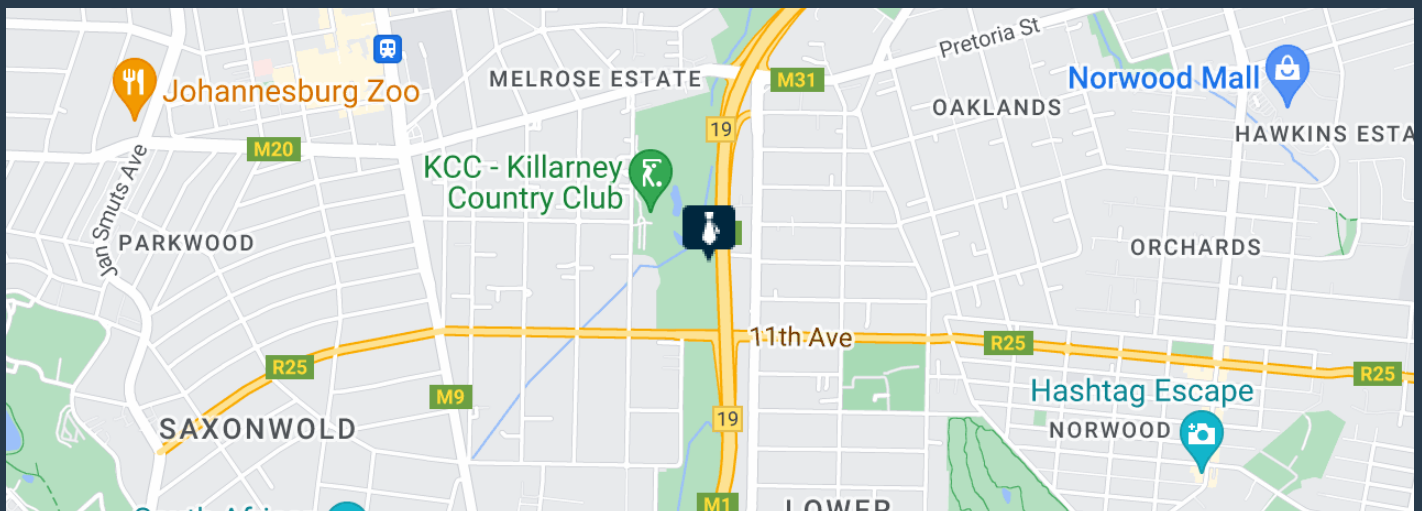
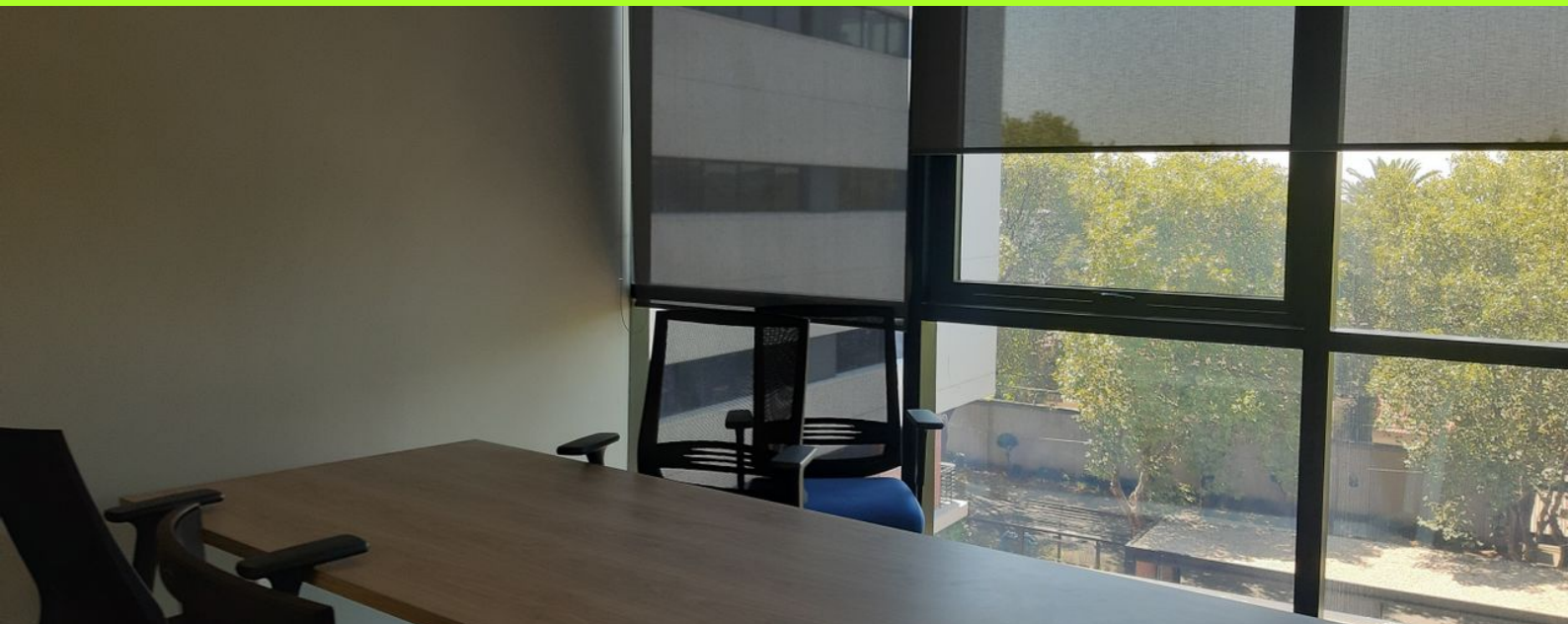
R126,600 per month excl. VAT

R200 per m²



www.spire.co.za

OFFICE SPACE IN HOUGHTON ESTATE



PROPERTY DETAILS

▲ Basement Parking	6.0	▲ Floor Size	633m ²
		▲ Land Size	633
		▲ Zoning	Commercial

WEB REF: SCL472

Nadeema Chothia | 083 305 5354 | nadeemac@spire.co.za

PROPERTY | WITH PURPOSE

R126,600 per month excl. VAT

R200 per m²



www.spire.co.za



CONTACT US



Nadeema Chothia

Agent

(011) 2685871

083 305 5354

nadeemac@spire.co.za

WEB REF: SCL472

Nadeema Chothia | 083 305 5354 | nadeemac@spire.co.za