

PROPERTY | WITH PURPOSE

R129,000 per month excl. VAT

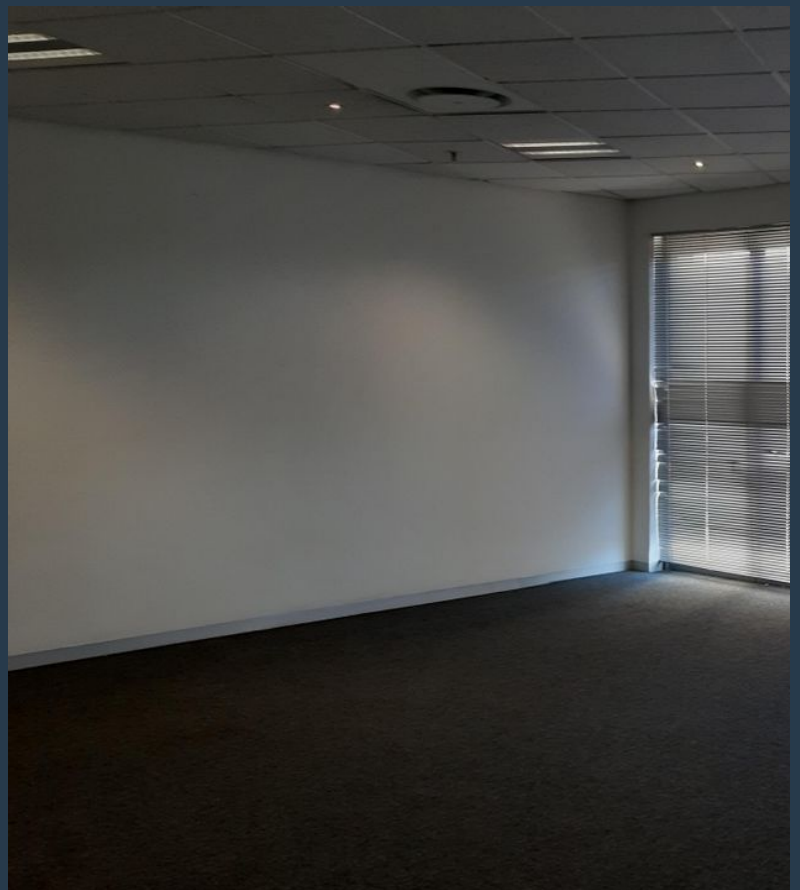
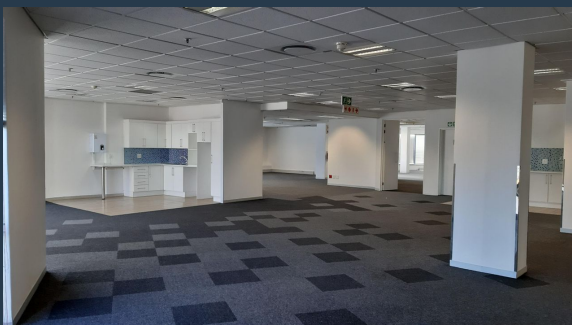
R100 per m²



www.spire.co.za

TO LET

1290m² Office space to rent in Rosebank, The office space is fully fitted and ready to be occupied by a growing business. Located just off Jan Smuts Ave this makes the building very accessible to commuters for mini bus taxi and bus routes. The Gautrain station is a just a few blocks away from the building. Spire Property Solutions is a new generation, multi-level property group with operations throughout South Africa. Our focus is property with a purpose. Operationally, Spire will extract and grow optimum value for property owners and lease clients through core services. Spire Property Broking is a solutions driven division focused on leasing and sales for Commercial, Industrial and Retail Properties. With a national team of committed...



WEB REF: CL3464

Nadeema Chothia | 083 305 5354 | nadeemac@spire.co.za

PROPERTY | WITH PURPOSE

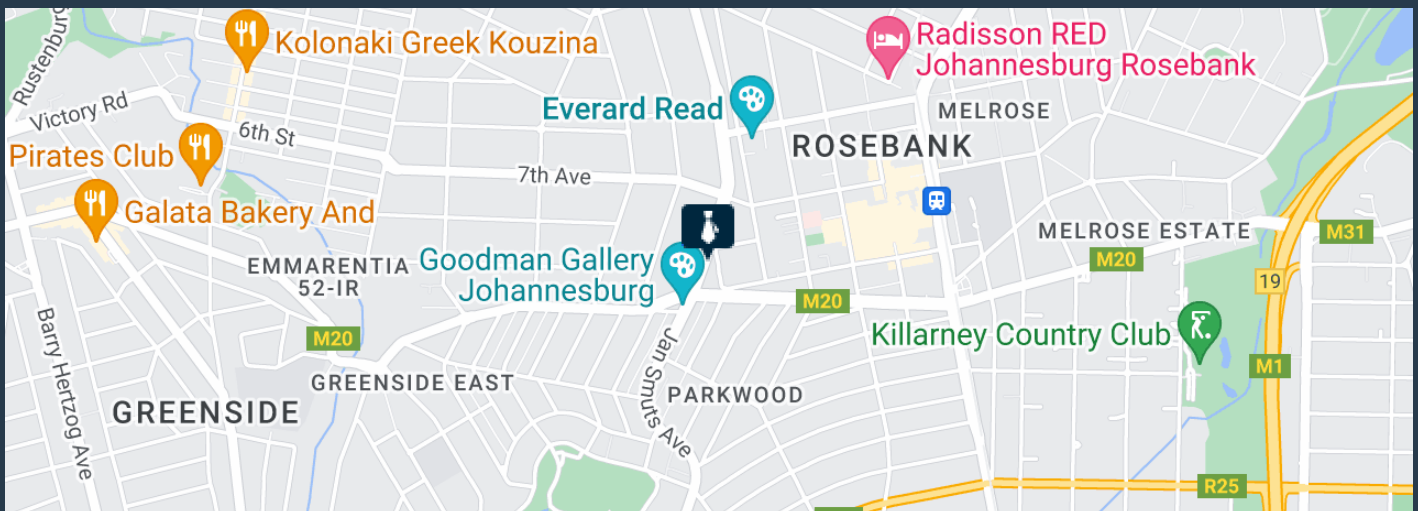
R129,000 per month excl. VAT

R100 per m²



www.spire.co.za

OFFICE SPACE TO RENT IN ROSEBANK



PROPERTY DETAILS

| | | | |
|--------------------|-----|--------------|--------------------|
| ▲ Security | Yes | ▲ Floor Size | 1290m ² |
| ▲ Air Conditioning | Yes | ▲ Zoning | Commercial |

WEB REF: CL3464

Nadeema Chothia | 083 305 5354 | nadeemac@spire.co.za

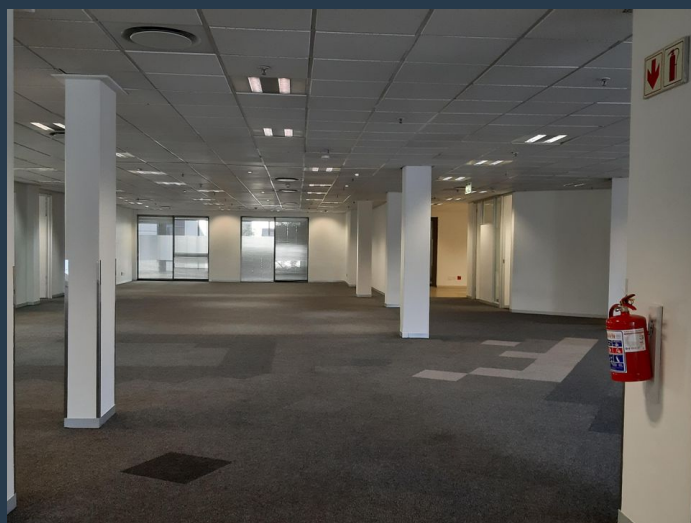
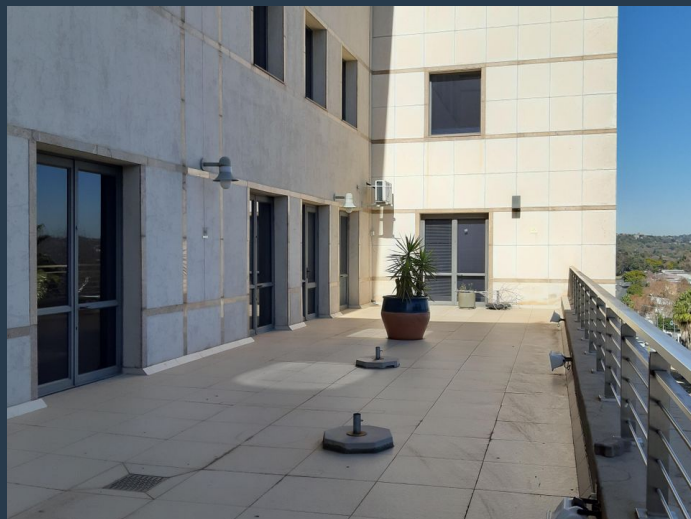
PROPERTY | WITH PURPOSE

R129,000 per month excl. VAT

R100 per m²



www.spire.co.za



CONTACT US



Nadeema Chothia

Agent

☎ (011) 2685871

📱 083 305 5354

✉ nadeemac@spire.co.za



Kate Shimwell

Agent

☎ (011) 2685871

📱 082 493 0273

✉ kates@spire.co.za

WEB REF: CL3464

Nadeema Chothia | 083 305 5354 | nadeemac@spire.co.za